

Datasheet for 600-401-Y42

APOLIPOPROTEIN A-I Antibody**Overview**

Description:	Anti-Apolipoprotein A-I (RABBIT) Antibody - 600-401-Y42
Item No.:	600-401-Y42
Size:	100 µg
Applications:	ELISA, WB
Reactivity:	Human, Chicken
Host Species:	Rabbit

Product Details

Background:	Apolipoprotein A1 (ApoA1) is the major protein component of high density lipoprotein (HDL) in plasma, which is correlated with cardiovascular disease. ApoA1 is synthesized in the liver and small intestine and promotes cholesterol efflux from tissues to the liver for excretion. It is a cofactor for lecithin cholesterolacyltransferase (LCAT), the enzyme responsible for the formation of most plasma cholesteryl esters. Defects in ApoA1 are associated with HDL deficiency, Tangier disease, and systemic non-neuropathic amyloidosis.
Synonyms:	ApoA1 Antibody, Apolipoprotein A-I, Apolipoprotein A1, Apo-AI
Host Species:	Rabbit
Clonality:	Polyclonal
Format:	IgG

Target Details

Gene Name:	APOA1
Reactivity:	Human, Chicken
Immunogen Type:	Conjugated Peptide
Immunogen:	Anti-ApoA1 antibody was prepared from whole rabbit serum produced by repeated immunizations with a 19 amino acid synthetic peptide near the C-terminus of human ApoA1.
Purity/Specificity:	Anti-ApoA1 Antibody was affinity purified from monospecific antiserum by immunoaffinity chromatography. Cross reactivity with ApoA1 from other sources has not been determined.

Relevant Links:	<ul style="list-style-type: none">• UniProtKB - P02647• GeneID - 335• NCBI - 4557321
------------------------	--

Application Details

Tested Applications:	ELISA, WB
Application Note:	Anti-ApoA1 Antibody has been tested for use in ELISA and Western Blotting. Specific conditions for reactivity should be optimized by the end user. Expect a band at approximately 31 kDa in Western Blots of specific cell lysates and tissues.
Assay Dilutions:	All assays should be optimized by the user. Recommended dilutions (if any) may be listed below.
ELISA:	1:10,000
WB:	1 µg/mL

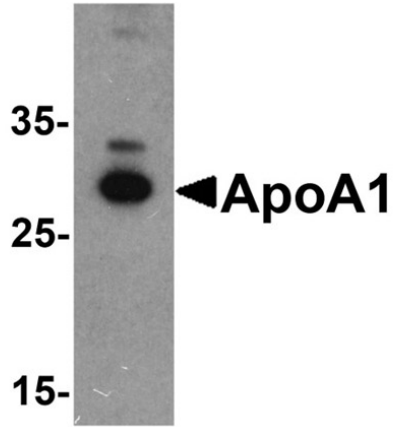
Formulation

Physical State:	Liquid (sterile filtered)
Concentration:	1.0 mg/mL by UV absorbance at 280 nm
Buffer:	0.01 M Sodium Phosphate, 0.25 M Sodium Chloride, pH 7.2
Preservative:	0.02% (w/v) Sodium Azide
Stabilizer:	None

Shipping & Handling

Shipping Condition:	Dry Ice
Storage Condition:	Store vial at -20° C prior to opening. Aliquot contents and freeze at -20° C or below for extended storage. Avoid cycles of freezing and thawing. Centrifuge product if not completely clear after standing at room temperature. This product is stable for several weeks at 4° C as an undiluted liquid. Dilute only prior to immediate use.
Expiration:	Expiration date is one (1) year from date of receipt.

Images

**Western Blot**

Western blot analysis of ApoA1.

Load: chicken liver tissue lysate.

Primary Antibody: ApoA1 antibody at 1 μ g/mL.

Disclaimer

This product is for research use only and is not intended for therapeutic or diagnostic applications. Please contact a technical service representative for more information. All products of animal origin manufactured by Rockland Immunochemicals are derived from starting materials of North American origin. Collection was performed in United States Department of Agriculture (USDA) inspected facilities and all materials have been inspected and certified to be free of disease and suitable for exportation. All properties listed are typical characteristics and are not specifications. All suggestions and data are offered in good faith but without guarantee as conditions and methods of use of our products are beyond our control. All claims must be made within 30 days following the date of delivery. The prospective user must determine the suitability of our materials before adopting them on a commercial scale. Suggested uses of our products are not recommendations to use our products in violation of any patent or as a license under any patent of Rockland Immunochemicals, Inc. If you require a commercial license to use this material and do not have one, then return this material, unopened to: Rockland Inc., P.O. BOX 5199, Limerick, Pennsylvania, USA.