

**Datasheet for 600-401-Y40****APH1 Antibody****Overview**

<b>Description:</b>	Anti-APH1 (RABBIT) Antibody - 600-401-Y40
<b>Item No.:</b>	600-401-Y40
<b>Size:</b>	100 µg
<b>Applications:</b>	ELISA, IHC, WB
<b>Reactivity:</b>	Human, Mouse, Rat
<b>Host Species:</b>	Rabbit

**Product Details**

<b>Background:</b>	APH1 was initially identified as a component of the Notch pathway in <i>C. elegans</i> . Along with nicastrin, PEN2, and presenilin-1 APH1 is an essential component of the gamma-secretase complex which cleave the amyloid precursor protein (APP) at what are known as the gamma- and epsilon-sites and can lead to the accumulation of the Amyloid beta peptide (Aβ) cleavage product that is associated with Alzheimer's disease. APH1 exists in at least three distinct isoforms with APH1a as the principal isoform present in the gamma-secretase complex. Mice deficient in this isoform, but not the other two, were lethal at E10.5, with impaired vascular and neural development observed.
<b>Synonyms:</b>	APH1 Antibody, APH-1, APH-1A, APH1A, CGI-78, 6530402N02Rik, PSF, UNQ579/PRO1141, Gamma-secretase subunit APH-1A, Aph-1alpha, APH-1a
<b>Host Species:</b>	Rabbit
<b>Clonality:</b>	Polyclonal
<b>Format:</b>	IgG

**Target Details**

<b>Gene Name:</b>	APH1A
<b>Reactivity:</b>	Human, Mouse, Rat
<b>Immunogen Type:</b>	Conjugated Peptide

<b>Immunogen:</b>	Anti-APH1 antibody was prepared from whole rabbit serum produced by repeated immunizations with a 18 amino acid synthetic peptide from near the internal region of human APH1.
<b>Purity/Specificity:</b>	Anti-APH1 Antibody was affinity purified from monospecific antiserum by immunoaffinity chromatography. Cross reactivity with APH1 from other sources has not been determined.
<b>Relevant Links:</b>	<ul style="list-style-type: none"><li>• <a href="#">UniProtKB - Q96BI3</a></li><li>• <a href="#">GeneID - 51107</a></li><li>• <a href="#">NCBI - AAH08732</a></li></ul>

## Application Details

<b>Tested Applications:</b>	ELISA, IHC, WB
<b>Application Note:</b>	Anti-APH1 Antibody has been tested for use in ELISA, Western Blotting, and Immunohistochemistry. Specific conditions for reactivity should be optimized by the end user. Expect a band at approximately 29 kDa in Western Blots of specific cell lysates and tissues.
<b>Assay Dilutions:</b>	All assays should be optimized by the user. Recommended dilutions (if any) may be listed below.
<b>ELISA:</b>	1:5000 - 1:10000
<b>IHC:</b>	5 µg/mL
<b>WB:</b>	0.5 - 1 µg/mL

## Formulation

<b>Physical State:</b>	Liquid (sterile filtered)
<b>Concentration:</b>	1 mg/mL by UV absorbance at 280 nm
<b>Buffer:</b>	0.01 M Sodium Phosphate, 0.25 M Sodium Chloride, pH 7.2
<b>Preservative:</b>	0.02% (w/v) Sodium Azide
<b>Stabilizer:</b>	None

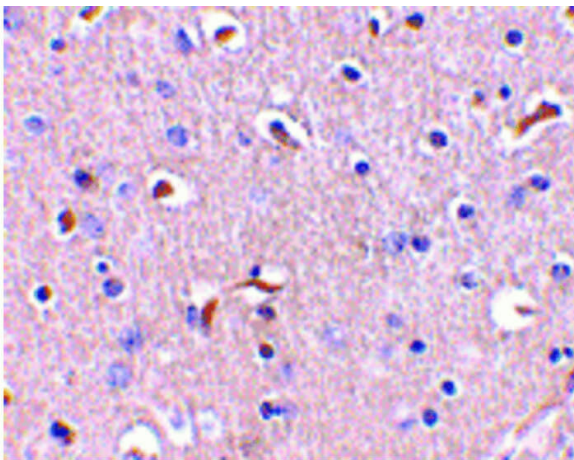
## Shipping & Handling

<b>Shipping Condition:</b>	Dry Ice
----------------------------	---------

**Storage Condition:** Store vial at -20° C prior to opening. Aliquot contents and freeze at -20° C or below for extended storage. Avoid cycles of freezing and thawing. Centrifuge product if not completely clear after standing at room temperature. This product is stable for several weeks at 4° C as an undiluted liquid. Dilute only prior to immediate use.

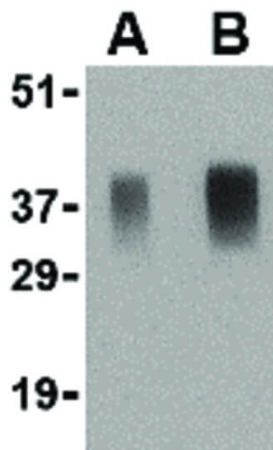
**Expiration:** Expiration date is one (1) year from date of receipt.

## Images



### Immunohistochemistry

Immunohistochemistry of APH1 antibody. Tissue: human brain tissue. Fixation: formalin fixed paraffin embedded. Antigen retrieval: not required. Primary antibody: APH1 antibody at 5 µg/mL for 1 h at RT. Secondary antibody: Peroxidase rabbit secondary antibody at 1:10,000 for 45 min at RT. Localization: APH1 is nuclear and cytoplasmic. Staining: APH1 as precipitated red signal with hematoxylin purple nuclear counterstain.



### Western Blot

Western Blot of APH1 antibody. Lane A: Human brain tissue lysate at 0.5 µg/mL. Lane B: Human brain tissue lysate at 1 µg/mL. Load: 35 µg per lane. Secondary antibody: Peroxidase rabbit secondary antibody at 1:10,000 for 45 min at RT. Block: 5% BLOTTO overnight at 4°C. Predicted/Observed size: 28.9 kDa, 36-38 kDa for APH1.

## Disclaimer

This product is for research use only and is not intended for therapeutic or diagnostic applications. Please contact a technical service representative for more information. All products of animal origin manufactured by Rockland Immunochemicals are derived from starting materials of North American origin. Collection was performed in United States Department of Agriculture (USDA) inspected facilities and all materials have been inspected and certified to be free of disease and suitable for exportation. All properties listed are typical characteristics and are not specifications. All suggestions and data are offered in good faith but without guarantee as conditions and methods of use of our products are beyond our control. All claims must be made within 30 days following the date of delivery. The prospective user must determine the suitability of our materials before adopting them on a commercial scale. Suggested uses of our products are not recommendations to use our products in violation of any patent or as a license under any patent of Rockland Immunochemicals, Inc. If you require a commercial license to use this material and do not have one, then return this material, unopened to: Rockland Inc., P.O. BOX 5199, Limerick, Pennsylvania, USA.