

**Datasheet for 600-401-Y14****ANGIOPOIETIN 2 Antibody****Overview**

<b>Description:</b>	Anti-Angiotensin 2 Antibody (RABBIT) Antibody - 600-401-Y14
<b>Item No.:</b>	600-401-Y14
<b>Size:</b>	100 µg
<b>Applications:</b>	ELISA, IHC, WB
<b>Reactivity:</b>	Human, Mouse, Rat
<b>Host Species:</b>	Rabbit

**Product Details**

<b>Background:</b>	Angiotensin-2 (ANGPT2) is a member of the Ang family, a family of angiogenic factors that play major roles in angiogenesis during the development and growth of human cancers, but also during lymphangiogenesis. ANGPT2 is generally considered an antagonist of ANGPT1 and endothelial TEK tyrosine kinase (TIE-2, TEK). ANGPT2 disrupts the vascular remodeling ability of ANGPT1 and is thought to induce endothelial cell apoptosis, resulting in vessel regression. Expression of ANGPT2 has been linked to invasive and metastatic phenotypes of gliomas and other cancers.
<b>Synonyms:</b>	ANGPT2 Antibody, ANG2, AGPT2, Angiotensin-2, ANG-2
<b>Host Species:</b>	Rabbit
<b>Clonality:</b>	Polyclonal
<b>Format:</b>	IgG

**Target Details**

<b>Gene Name:</b>	ANGPT2
<b>Reactivity:</b>	Human, Mouse, Rat
<b>Immunogen Type:</b>	Conjugated Peptide
<b>Immunogen:</b>	Anti-ANGPT2 antibody was prepared from whole rabbit serum produced by repeated immunizations with an 18 amino acid synthetic peptide near the C-terminus of human ANGPT2.

**Purity/Specificity:** Anti-ANGPT2 Antibody was affinity purified from monospecific antiserum by immunoaffinity chromatography. At least three isoforms of ANGPT2 are known to exist; this antibody will detect all three isoforms.

**Relevant Links:**

- [UniProtKB - O15123](#)
- [GeneID - 285](#)
- [NCBI - NP\\_001138](#)

## Application Details

**Tested Applications:** ELISA, IHC, WB

**Application Note:** Anti-ANGPT2 Antibody has been tested for use in ELISA, Western Blotting, and Immunohistochemistry. Specific conditions for reactivity should be optimized by the end user. Expect a band at approximately 57 kDa in Western Blots of specific cell lysates and tissues.

**Assay Dilutions:** All assays should be optimized by the user. Recommended dilutions (if any) may be listed below.

**ELISA:** 1:10,000-1:20,000

**IHC:** 2.5 µg/mL

**WB:** 1 - 2 µg/mL

## Formulation

**Physical State:** Liquid (sterile filtered)

**Concentration:** 1.0 mg/mL by UV absorbance at 280 nm

**Buffer:** 0.01 M Sodium Phosphate, 0.25 M Sodium Chloride, pH 7.2

**Preservative:** 0.02% (w/v) Sodium Azide

**Stabilizer:** None

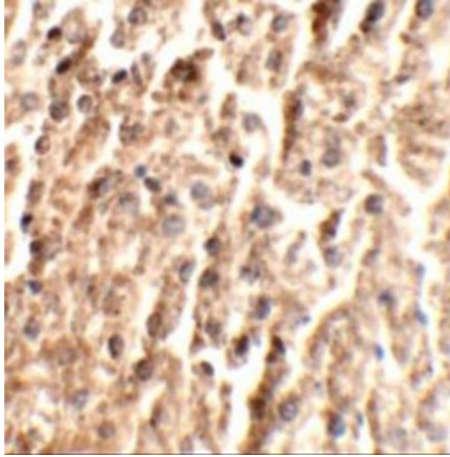
## Shipping & Handling

**Shipping Condition:** Dry Ice

**Storage Condition:** Store vial at -20° C prior to opening. Aliquot contents and freeze at -20° C or below for extended storage. Avoid cycles of freezing and thawing. Centrifuge product if not completely clear after standing at room temperature. This product is stable for several weeks at 4° C as an undiluted liquid. Dilute only prior to immediate use.

**Expiration:** Expiration date is one (1) year from date of receipt.

## Images

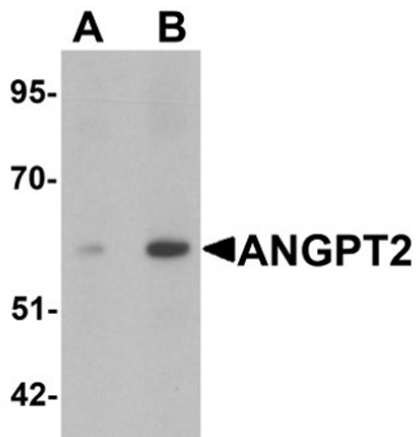


### Immunohistochemistry

Immunohistochemistry of ANGPT2.

Tissue: mouse liver tissue.

Primary Antibody: ANGPT2 antibody at 2.5 µg/mL.



### Western Blot

Western blot analysis of ANGPT2.

Load: human liver tissue lysate.

Primary Antibody: ANGPT2 antibody at (A) 1 and (B) 2 µg/mL.

## Disclaimer

This product is for research use only and is not intended for therapeutic or diagnostic applications. Please contact a technical service representative for more information. All products of animal origin manufactured by Rockland Immunochemicals are derived from starting materials of North American origin. Collection was performed in United States Department of Agriculture (USDA) inspected facilities and all materials have been inspected and certified to be free of disease and suitable for exportation. All properties listed are typical characteristics and are not specifications. All suggestions and data are offered in good faith but without guarantee as conditions and methods of use of our products are beyond our control. All claims must be made within 30 days following the date of delivery. The prospective user must determine the suitability of our materials before adopting them on a commercial scale. Suggested uses of our products are not recommendations to use our products in violation of any patent or as a license under any patent of Rockland Immunochemicals, Inc. If you require a commercial license to use this material and do not have one, then return this material, unopened to: Rockland Inc., P.O. BOX 5199, Limerick, Pennsylvania, USA.