

Datasheet for 600-401-Y00**AKT1S1 Antibody****Overview**

| | |
|----------------------|---|
| Description: | Anti-AKT1S1 (RABBIT) Antibody - 600-401-Y00 |
| Item No.: | 600-401-Y00 |
| Size: | 100 µg |
| Applications: | ELISA, IF, IHC, WB |
| Reactivity: | Human, Mouse, Rat |
| Host Species: | Rabbit |

Product Details

| | |
|----------------------|--|
| Background: | The Akt signaling pathway contributes to the regulation of apoptosis after a variety of cell death signals. AKT1S1, also known as PRAS40, is a proline-rich substrate of the kinase AKT1 and is thought to play a role in neuroprotection mediated by nerve growth factor (NGF) after transient focal cerebral ischemia (1). AKT1S1 is also a substrate and potential regulator of mammalian target of rapamycin (mTOR), a serine/threonine kinase that regulates cell growth and cell cycle, and a negative regulator of autophagy (2). Treatment with the insulin-like growth factor-1 (IGF1) can induce the phosphorylation of AKT1S1 via the PI3K/AKT signaling pathway in PC12 cells (3). |
| Synonyms: | AKT1S1 Antibody, Lobe, PRAS40, Proline-rich AKT1 substrate 1, 40 kDa proline-rich AKT substrate |
| Host Species: | Rabbit |
| Clonality: | Polyclonal |
| Format: | IgG |

Target Details

| | |
|------------------------|--|
| Gene Name: | AKT1S1 |
| Reactivity: | Human, Mouse, Rat |
| Immunogen Type: | Conjugated Peptide |
| Immunogen: | Anti-AKT1S1 antibody was prepared from whole rabbit serum produced by repeated immunizations with a 19 amino acid peptide near the C-terminus of human AKT1S1. |

| | |
|----------------------------|--|
| Purity/Specificity: | Anti-AKT1S1 Antibody was affinity purified from monospecific antiserum by immunoaffinity chromatography. AKT1S1 antibody is human, mouse and rat reactive. At least three isoforms of AKT1S1 are known to exist. |
| Relevant Links: | <ul style="list-style-type: none">• UniProtKB - Q96B36• GeneID - 84335• NCBI - NP_115751 |

Application Details

| | |
|-----------------------------|--|
| Tested Applications: | ELISA, IF, IHC, WB |
| Application Note: | Anti-AKT1S1 Antibody has been tested for use in ELISA, Western Blotting, Immunohistochemistry and Immunofluorescence. Specific conditions for reactivity should be optimized by the end user. Expect a band at approximately 28 kDa in Western Blots of specific cell lysates and tissues. |
| Assay Dilutions: | All assays should be optimized by the user. Recommended dilutions (if any) may be listed below. |
| ELISA: | 1:10,000 - 1:20,000 |
| IF: | User Optimized |
| IHC: | User Optimized |
| WB: | 1 - 2 µg/mL |

Formulation

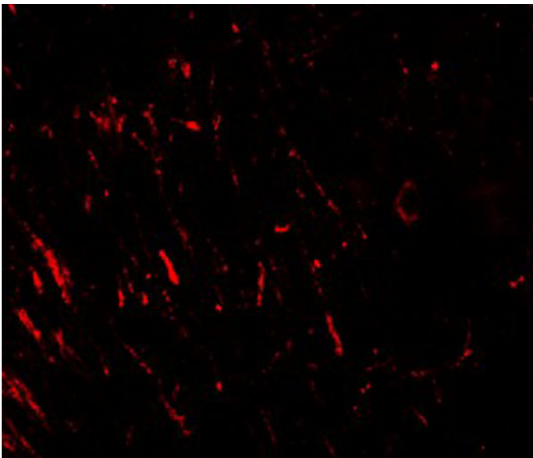
| | |
|------------------------|---|
| Physical State: | Liquid (sterile filtered) |
| Concentration: | 1 mg/mL by UV absorbance at 280 nm |
| Buffer: | 0.01 M Sodium Phosphate, 0.25 M Sodium Chloride, pH 7.2 |
| Preservative: | 0.02% (w/v) Sodium Azide |
| Stabilizer: | None |

Shipping & Handling

| | |
|----------------------------|---------|
| Shipping Condition: | Dry Ice |
|----------------------------|---------|

| | |
|---------------------------|---|
| Storage Condition: | Store vial at -20° C prior to opening. Aliquot contents and freeze at -20° C or below for extended storage. Avoid cycles of freezing and thawing. Centrifuge product if not completely clear after standing at room temperature. This product is stable for several weeks at 4° C as an undiluted liquid. Dilute only prior to immediate use. |
| Expiration: | Expiration date is one (1) year from date of receipt. |

Images

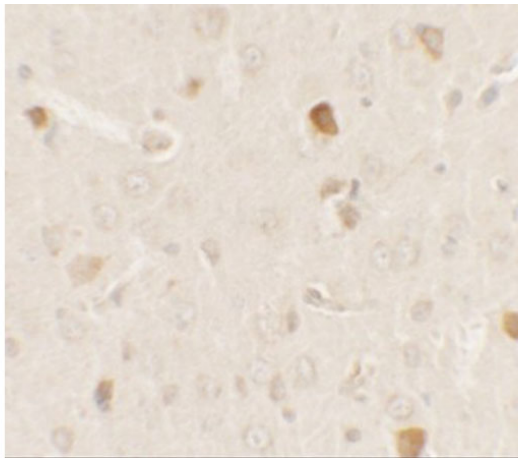


Immunofluorescence Microscopy

Immunofluorescence of AKT1S1.

Tissue: rat brain tissue.

Primary Antibody: AKT1S1 antibody at 20 µg/mL.

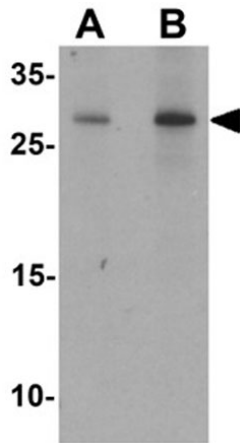


Immunohistochemistry

Immunohistochemistry of AKT1S1.

Tissue: rat brain tissue.

Primary Antibody: AKT1S1 antibody at 2.5 µg/mL.

**Western Blot**

Western blot of AKT1S1.

Load: human brain tissue lysate.

Primary Antibody: AKT1S1 antibody at (A) 1 and (B) 2 $\mu\text{g}/\text{mL}$.**Disclaimer**

This product is for research use only and is not intended for therapeutic or diagnostic applications. Please contact a technical service representative for more information. All products of animal origin manufactured by Rockland Immunochemicals are derived from starting materials of North American origin. Collection was performed in United States Department of Agriculture (USDA) inspected facilities and all materials have been inspected and certified to be free of disease and suitable for exportation. All properties listed are typical characteristics and are not specifications. All suggestions and data are offered in good faith but without guarantee as conditions and methods of use of our products are beyond our control. All claims must be made within 30 days following the date of delivery. The prospective user must determine the suitability of our materials before adopting them on a commercial scale. Suggested uses of our products are not recommendations to use our products in violation of any patent or as a license under any patent of Rockland Immunochemicals, Inc. If you require a commercial license to use this material and do not have one, then return this material, unopened to: Rockland Inc., P.O. BOX 5199, Limerick, Pennsylvania, USA.