

Datasheet for 600-401-X90**AIMP1 Antibody****Overview**

Description:	Anti-AIMP1 (RABBIT) Antibody - 600-401-X90
Item No.:	600-401-X90
Size:	100 µg
Applications:	ELISA, IHC, WB
Reactivity:	Human, Mouse, Rat
Host Species:	Rabbit

Product Details

Background:	AIMP1 (Endothelial monocyte-activating polypeptide II, EMAP2) is a proinflammatory cytokine for monocytes and granulocytes (1). It is specifically induced by apoptosis and is involved in the control of angiogenesis, inflammation, and wound healing (1,2). AIMP1 was identified as one of three auxiliary factors of the mammalian aminoacyl tRNA synthetase (ARS) complex. It binds and facilitates the catalytic reaction of arginyl-tRNA synthetase (2,3). Recent studies show that CD23 plays an essential role in the AIMP1-induced immune response and might be a target in the treatment of inflammatory diseases (4).
Synonyms:	AIMP1 Antibody, p43, HLD3, EMAP2, SCYE1, EMAPII, Aminoacyl tRNA synthase complex-interacting multifunctional protein 1, Multisynthase complex auxiliary component p43, EMAP-2
Host Species:	Rabbit
Clonality:	Polyclonal
Format:	IgG

Target Details

Gene Name:	AIMP1
Reactivity:	Human, Mouse, Rat
Immunogen Type:	Conjugated Peptide
Immunogen:	Anti-AIMP1 antibody was prepared from whole rabbit serum produced by repeated immunizations with a 19 amino acid peptide near the C-terminus of human AIMP1.

Purity/Specificity: Anti-AIMP1 antibody was affinity purified from monospecific antiserum by immunoaffinity chromatography. AIMP1 antibody is human, mouse and rat reactive. At least two isoforms of AIMP1 are known to exist; this antibody will recognize both isoforms. AIMP1 antibody is predicted to not cross-react with AIMP2.

Relevant Links:

- [UniProtKB - Q12904](#)
- [GeneID - 9255](#)
- [NCBI - NP_001135888](#)

Application Details

Tested Applications: ELISA, IHC, WB

Application Note: Anti-AIMP1 Antibody has been tested for use in ELISA, Western Blotting, Immunohistochemistry. Specific conditions for reactivity should be optimized by the end user. Expect a band at approximately 35 kDa in Western Blots of specific cell lysates and tissues.

Assay Dilutions: All assays should be optimized by the user. Recommended dilutions (if any) may be listed below.

ELISA: 1:5000 - 1:10000

IHC: User Optimized

WB: 0.5 - 1 µg/mL

Formulation

Physical State: Liquid (sterile filtered)

Concentration: 1 mg/mL by UV absorbance at 280 nm

Buffer: 0.01 M Sodium Phosphate, 0.25 M Sodium Chloride, pH 7.2

Preservative: 0.02% (w/v) Sodium Azide

Stabilizer: None

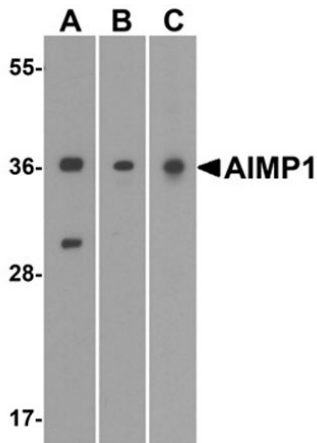
Shipping & Handling

Shipping Condition: Dry Ice

Storage Condition: Store vial at -20° C prior to opening. Aliquot contents and freeze at -20° C or below for extended storage. Avoid cycles of freezing and thawing. Centrifuge product if not completely clear after standing at room temperature. This product is stable for several weeks at 4° C as an undiluted liquid. Dilute only prior to immediate use.

Expiration: Expiration date is one (1) year from date of receipt.

Images

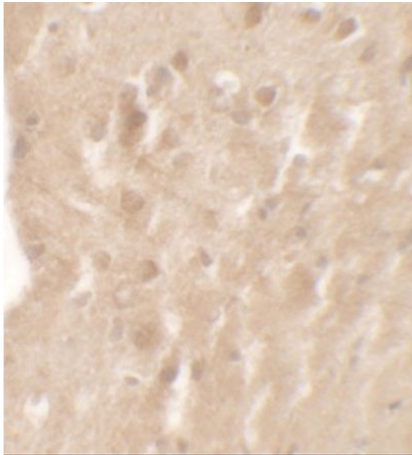


Western Blot

Western blot of AIMP1.

Load: (A) human, (B) mouse, and (C) rat brain tissue lysate.

Primary Antibody: AIMP1 antibody at 1 µg/ml.



Immunohistochemistry

Immunohistochemistry of AIMP1.

Tissue: mouse brain tissue.

Primary Antibody: AIMP1 antibody at 5 µg/mL.

Disclaimer

This product is for research use only and is not intended for therapeutic or diagnostic applications. Please contact a technical service representative for more information. All products of animal origin manufactured by Rockland Immunochemicals are derived from starting materials of North American origin. Collection was performed in United States Department of Agriculture (USDA) inspected facilities and all materials have been inspected and certified to be free of disease and suitable for exportation. All properties listed are typical characteristics and are not specifications. All suggestions and data are offered in good faith but without guarantee as conditions and methods of use of our products are beyond our control. All claims must be made within 30 days following the date of delivery. The prospective user must determine the suitability of our materials before adopting them on a commercial scale. Suggested uses of our products are not recommendations to use our products in violation of any patent or as a license under any patent of Rockland Immunochemicals, Inc. If you require a commercial license to use this material and do not have one, then return this material, unopened to: Rockland Inc., P.O. BOX 5199, Limerick, Pennsylvania, USA.