

Datasheet for 600-401-X82**AGTR2 Antibody****Overview**

Description:	Anti-AGTR2 (RABBIT) Antibody - 600-401-X82
Item No.:	600-401-X82
Size:	100 µg
Applications:	ELISA, IF, IHC, WB
Reactivity:	Human, Mouse, Rat
Host Species:	Rabbit

Product Details

Background:	Angiotensin II is a potent vasopressor hormone and a primary regulator of aldosterone secretion that acts through at least two types of receptors, AGTR1 and AGTR2. It is an important effector controlling blood pressure and volume in the cardiovascular system and plays a major role in the development of the mammalian kidney and urinary tract. Like AGTR1, AGTR2 is a seven transmembrane G protein-coupled receptor (GPCR), but AGTR2 does not demonstrate most of the classic features of GPCR signaling. AGTR2 is involved in a wide range of activities, including the induction of neurite outgrowth and the inhibition of cellular proliferation, in addition to the known function of mediation of vasoconstriction.
Synonyms:	AGTR2 Antibody, AT2, ATGR2, MRX88, Type-2 angiotensin II receptor, Angiotensin II type-2 receptor, AT2
Host Species:	Rabbit
Clonality:	Polyclonal
Format:	IgG

Target Details

Gene Name:	AGTR2
Reactivity:	Human, Mouse, Rat
Immunogen Type:	Conjugated Peptide

Immunogen:	Anti-AGTR2 antibody was prepared from whole rabbit serum produced by repeated immunizations with a 16 amino acid synthetic peptide from near the internal region of human AGTR2.
Purity/Specificity:	Anti-AGTR2 Antibody was affinity purified from monospecific antiserum by immunoaffinity chromatography. Cross reactivity with AGTR2 from other sources has not been determined.
Relevant Links:	<ul style="list-style-type: none">• UniProtKB - P50052• GeneID - 186• NCBI - AAS45437

Application Details

Tested Applications:	ELISA, IF, IHC, WB
Application Note:	Anti-AGTR2 Antibody has been tested for use in ELISA, Western Blotting, immunofluorescence, Immunocytochemistry, and Immunohistochemistry. Specific conditions for reactivity should be optimized by the end user. Expect a band at approximately 36 kDa in Western Blots of specific cell lysates and tissues.
Assay Dilutions:	All assays should be optimized by the user. Recommended dilutions (if any) may be listed below.
ELISA:	1:5,000
IF:	1 µg/mL
IHC:	5 µg/mL
WB:	0.5 µg/mL

Formulation

Physical State:	Liquid (sterile filtered)
Concentration:	1.0 mg/mL by UV absorbance at 280 nm
Buffer:	0.01 M Sodium Phosphate, 0.25 M Sodium Chloride, pH 7.2
Preservative:	0.02% (w/v) Sodium Azide
Stabilizer:	None

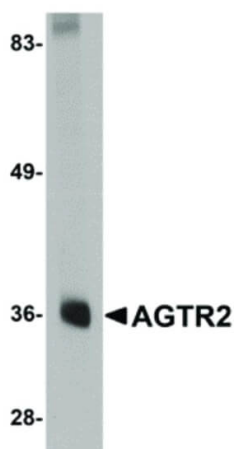
Shipping & Handling

Shipping Condition:	Dry Ice
----------------------------	---------

Storage Condition: Store vial at -20° C prior to opening. Aliquot contents and freeze at -20° C or below for extended storage. Avoid cycles of freezing and thawing. Centrifuge product if not completely clear after standing at room temperature. This product is stable for several weeks at 4° C as an undiluted liquid. Dilute only prior to immediate use.

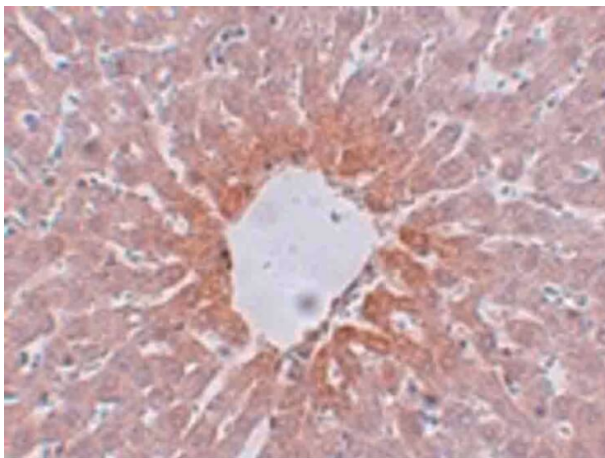
Expiration: Expiration date is one (1) year from date of receipt.

Images



Western Blot

Western Blot of AGTR2 antibody. Lane 1: mouse kidney tissue lysate with AGTR2 antibody at 0.5 µg/mL. Secondary antibody: Peroxidase rabbit secondary antibody at 1:10,000 for 45 min at RT. Block: 5% BLOTTO overnight at 4°C. Predicted/Observed size: 36 kDa, 36 kDa for AGTR2. Other band(s): AGTR2. splice variants and isoforms.



Immunohistochemistry

Immunohistochemistry of AGTR2 antibody. Tissue: rat liver tissue. Fixation: formalin fixed paraffin embedded. Antigen retrieval: not required. Primary antibody: AGTR2 antibody at 5 µg/mL for 1 h at RT. Secondary antibody: Peroxidase rabbit secondary antibody at 1:10,000 for 45 min at RT. Localization: AGTR2 is a multi-pass membrane protein. Staining: AGTR2 as precipitated brown signal with purple nuclear counterstain.

Disclaimer

This product is for research use only and is not intended for therapeutic or diagnostic applications. Please contact a technical service representative for more information. All products of animal origin manufactured by Rockland Immunochemicals are derived from starting materials of North American origin. Collection was performed in United States Department of Agriculture (USDA) inspected facilities and all materials have been inspected and certified to be free of disease and suitable for exportation. All properties listed are typical characteristics and are not specifications. All suggestions and data are offered in good faith but without guarantee as conditions and methods of use of our products are beyond our control. All claims must be made within 30 days following the date of delivery. The prospective user must determine the suitability of our materials before adopting them on a commercial scale. Suggested uses of our products are not recommendations to use our products in violation of any patent or as a license under any patent of Rockland Immunochemicals, Inc. If you require a commercial license to use this material and do not have one, then return this material, unopened to: Rockland Inc., P.O. BOX 5199, Limerick, Pennsylvania, USA.