

Datasheet for 600-401-X76**AES Antibody****Overview**

Description:	Anti-AES (RABBIT) Antibody - 600-401-X76
Item No.:	600-401-X76
Size:	100 µg
Applications:	ELISA, IF, IHC, WB
Reactivity:	Human, Mouse
Host Species:	Rabbit

Product Details

Background: Adhesion to extracellular matrix regulates cell survival through both integrin engagement and appropriate cell spreading. Anoikis is the molecular mechanism of apoptosis induced by integrin detachment. Amino-terminal enhancer of split (AES) is a member of the Groucho/ transducin-like enhancer of split (TLE) family of transcriptional regulators, a group of transcriptional co-repressors that play important roles in neurogenesis, segmentation, and sex determination. AES forms a complex with Bit1 (Bcl-2 inhibitor of transcription 1), a mitochondrial protein that is released into the cytoplasm upon onset of apoptosis. It has been suggested that this complex turns off a survival-promoting gene transcription program controlled by the TLE protein family. Interestingly, apoptosis of cells transfected with AES and Bit1 could be inhibited if the cells were allowed to attach to fibronectin through the alpha5beta1 integrin suggesting that the Bit1-AES pathway contributing to anoikis is regulated by integrins, and in particular, the alpha5beta1 integrin.

Synonyms:	AES Antibody, GRG, ESP1, GRG5, TLE5, AES-1, AES-2, GRG, Amino-terminal enhancer of split, Gp130-associated protein GAM, Amino enhancer of split
Host Species:	Rabbit
Clonality:	Polyclonal
Format:	IgG

Target Details

Gene Name:	AES
Reactivity:	Human, Mouse

Immunogen Type:	Conjugated Peptide
Immunogen:	Anti-AES antibody was prepared from whole rabbit serum produced by repeated immunizations with a 16 amino acid synthetic peptide from near the amino-terminus of human AES.
Purity/Specificity:	Anti-AES Antibody was affinity purified from monospecific antiserum by immunoaffinity chromatography. Cross reactivity with AES from other sources has not been determined.
Relevant Links:	<ul style="list-style-type: none">• UniProtKB - Q08117• GenelD - 166• NCBI - NP_945320

Application Details

Tested Applications:	ELISA, IF, IHC, WB
Application Note:	Anti-AES Antibody has been tested for use in ELISA, Immunocytochemistry, Immunofluorescence and Western Blotting. Specific conditions for reactivity should be optimized by the end user. Expect a band at approximately 21 kDa in Western Blots of specific cell lysates and tissues.
Assay Dilutions:	All assays should be optimized by the user. Recommended dilutions (if any) may be listed below.
ELISA:	1:20,000 - 1:40,000
IF:	20 µg/mL
WB:	2 - 4 µg/mL

Formulation

Physical State:	Liquid (sterile filtered)
Concentration:	1 mg/mL by UV absorbance at 280 nm
Buffer:	0.01 M Sodium Phosphate, 0.25 M Sodium Chloride, pH 7.2
Preservative:	0.02% (w/v) Sodium Azide
Stabilizer:	None

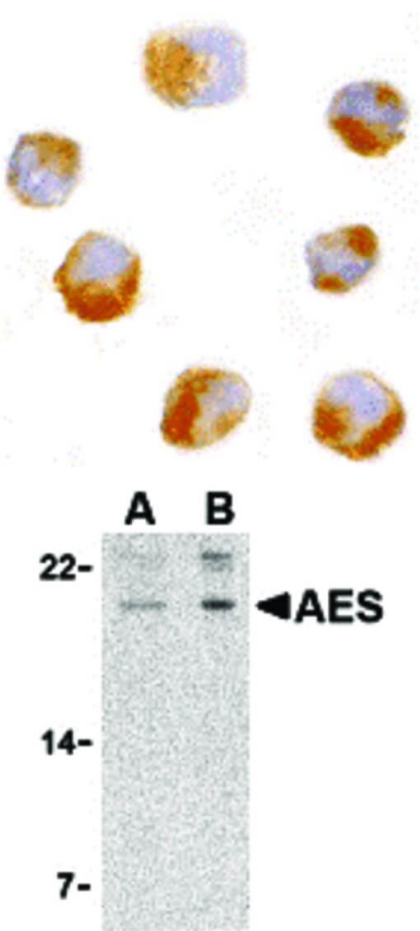
Shipping & Handling

Shipping Condition:	Dry Ice
----------------------------	---------

Storage Condition: Store vial at -20° C prior to opening. Aliquot contents and freeze at -20° C or below for extended storage. Avoid cycles of freezing and thawing. Centrifuge product if not completely clear after standing at room temperature. This product is stable for several weeks at 4° C as an undiluted liquid. Dilute only prior to immediate use.

Expiration: Expiration date is one (1) year from date of receipt.

Images

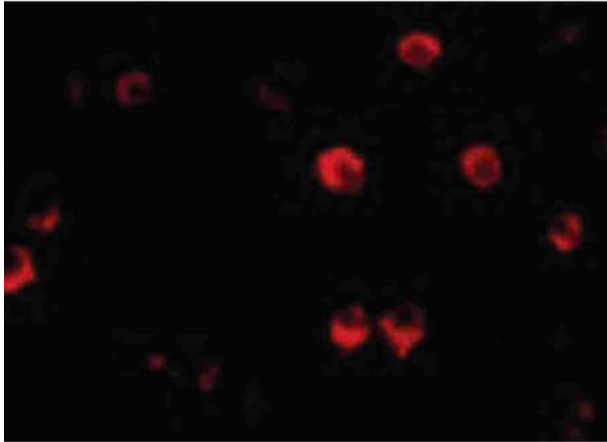


Immunohistochemistry

Immunocytochemistry of AES antibody. Cell Type: 293 cells. Fixation: formalin fixed paraffin embedded. Antigen retrieval: not required. Primary antibody: AES antibody at 10 µg/mL for 1 h at RT. Secondary antibody: Peroxidase rabbit secondary antibody at 1:10,000 for 45 min at RT. Localization: AES is nuclear. Staining: AES is stained brown with hematoxylin purple counterstain.

Western Blot

Western Blot of AES antibody. Lane A: 293 cell lysate with AES antibody at 2 µg/mL. Lane B: 293 cell lysate with AES antibody at 4 µg/mL. Load: 35 µg per lane. Primary antibody: AES antibody at designated concentrations for overnight at 4°C. Secondary antibody: Peroxidase rabbit secondary antibody at 1:10,000 for 45 min at RT. Block: 5% BLOTTO overnight at 4°C. Predicted/Observed size: 22 kDa, 20 kDa for AES. Other band(s): AES splice variants and isoforms.



Immunofluorescence Microscopy

Immunofluorescence Microscopy of AES antibody. Cell Type: 293 cells. Fixation: 0.5% PFA. Antigen retrieval: not required. Primary antibody: AES antibody at 20 µg/mL for 1 h at RT. Secondary antibody: Fluorescein rabbit secondary antibody at 1:10,000 for 45 min at RT. Localization: AES is nuclear. Staining: AES as red fluorescent signal.

Disclaimer

This product is for research use only and is not intended for therapeutic or diagnostic applications. Please contact a technical service representative for more information. All products of animal origin manufactured by Rockland Immunochemicals are derived from starting materials of North American origin. Collection was performed in United States Department of Agriculture (USDA) inspected facilities and all materials have been inspected and certified to be free of disease and suitable for exportation. All properties listed are typical characteristics and are not specifications. All suggestions and data are offered in good faith but without guarantee as conditions and methods of use of our products are beyond our control. All claims must be made within 30 days following the date of delivery. The prospective user must determine the suitability of our materials before adopting them on a commercial scale. Suggested uses of our products are not recommendations to use our products in violation of any patent or as a license under any patent of Rockland Immunochemicals, Inc. If you require a commercial license to use this material and do not have one, then return this material, unopened to: Rockland Inc., P.O. BOX 5199, Limerick, Pennsylvania, USA.