

Datasheet for 600-401-X74**ADROPIN Antibody****Overview**

Description:	Anti-ADROPIN (RABBIT) Antibody - 600-401-X74
Item No.:	600-401-X74
Size:	100 µg
Applications:	ELISA, IF, IHC, WB
Reactivity:	Human, Mouse, Rat
Host Species:	Rabbit

Product Details

Background:	ADROPIN is a recently identified protein that has been implicated in the maintenance of energy homeostasis and insulin resistance (1-3). ADROPIN expression is regulated by energy status and dietary nutrient content and is altered by obesity and regulates the expression of hepatic lipogenic genes and adipose tissue peroxisome proliferator-activated receptor gamma (PPAR-gamma) (1). ADROPIN levels increase with dietary fat content (2). ADROPIN has also been proposed to play a role in the regulation of endothelial function (3).
Synonyms:	ADROPIN Antibody, UNQ470, C9orf165, UNQ470/PRO830, Adropin, Energy homeostasis-associated protein
Host Species:	Rabbit
Clonality:	Polyclonal
Format:	IgG

Target Details

Gene Name:	ENHO
Reactivity:	Human, Mouse, Rat
Immunogen Type:	Conjugated Peptide
Immunogen:	Anti-ADROPIN antibody was prepared from whole rabbit serum produced by repeated immunizations with an 18 amino acid peptide near the C-terminus of human ADROPIN.

Purity/Specificity: Anti-ADROPIN antibody was affinity purified from monospecific antiserum by immunoaffinity chromatography. ADROPIN antibody is human, mouse and rat reactive. Despite its predicted molecular weight, ADROPIN often migrates at a higher than expected molecular weight in SDS-PAGE.

Relevant Links:

- [UniProtKB - Q6UWT2](#)
- [GeneID - 375704](#)
- [NCBI - NP_940975](#)

Application Details

Tested Applications: ELISA, IF, IHC, WB

Application Note: Anti-ADROPIN Antibody has been tested for use in ELISA, Immunofluorescence, Immunohistochemistry and Western Blotting. Specific conditions for reactivity should be optimized by the end user. Expect a band at approximately 16 kDa in Western Blots of specific cell lysates and tissues.

Assay Dilutions: All assays should be optimized by the user. Recommended dilutions (if any) may be listed below.

ELISA: 1:10,000-1:20,000

IF: 20 µg/mL

IHC: 5 µg/mL

WB: 1 - 2 µg/mL

Formulation

Physical State: Liquid (sterile filtered)

Concentration: 1.0 mg/mL by UV absorbance at 280 nm

Buffer: 0.01 M Sodium Phosphate, 0.25 M Sodium Chloride, pH 7.2

Preservative: 0.02% (w/v) Sodium Azide

Stabilizer: None

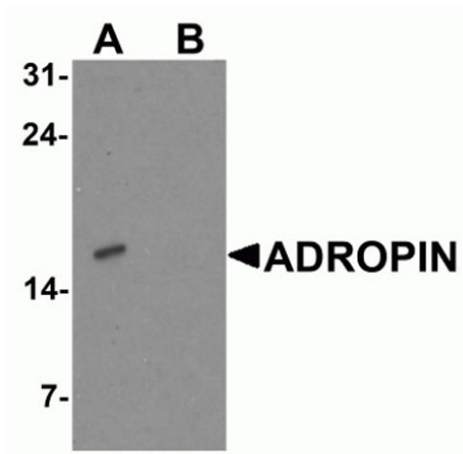
Shipping & Handling

Shipping Condition: Wet Ice

Storage Condition: Antibody can be stored at 4°C up to one year. Antibodies should not be exposed to prolonged high temperatures.

Expiration: Expiration date is one (1) year from date of receipt.

Images

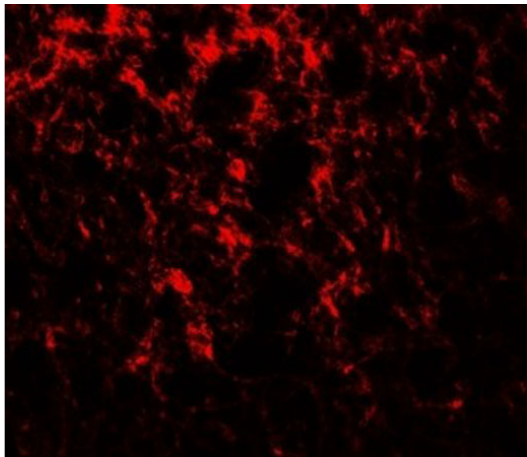


Western Blot

Western blot of ADROPIN.

Load: human brain tissue lysate.

Primary Antibody: ADROPIN antibody at 2 $\mu\text{g/ml}$ in (A) the absence and (B) the presence of blocking peptide.

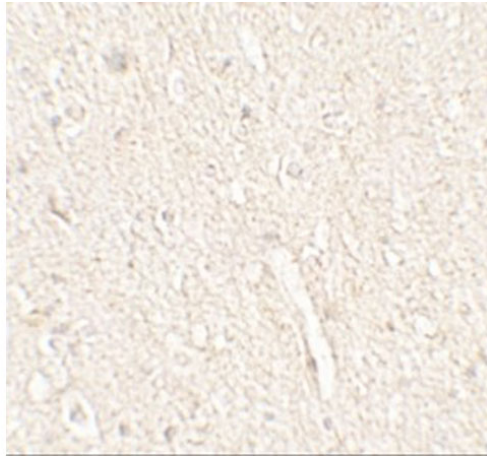


Immunofluorescence Microscopy

Immunofluorescence of ADROPIN.

Tissue: human brain tissue.

Primary Antibody: ADROPIN antibody at 20 $\mu\text{g/mL}$.

**Immunohistochemistry**

Immunohistochemistry of ADROPIN.

Tissue: human brain tissue.

Primary Antibody: ADROPIN antibody at 5 µg/mL.

Disclaimer

This product is for research use only and is not intended for therapeutic or diagnostic applications. Please contact a technical service representative for more information. All products of animal origin manufactured by Rockland Immunochemicals are derived from starting materials of North American origin. Collection was performed in United States Department of Agriculture (USDA) inspected facilities and all materials have been inspected and certified to be free of disease and suitable for exportation. All properties listed are typical characteristics and are not specifications. All suggestions and data are offered in good faith but without guarantee as conditions and methods of use of our products are beyond our control. All claims must be made within 30 days following the date of delivery. The prospective user must determine the suitability of our materials before adopting them on a commercial scale. Suggested uses of our products are not recommendations to use our products in violation of any patent or as a license under any patent of Rockland Immunochemicals, Inc. If you require a commercial license to use this material and do not have one, then return this material, unopened to: Rockland Inc., P.O. BOX 5199, Limerick, Pennsylvania, USA.