

Datasheet for 600-401-X60**ACE2 Antibody****Overview**

Description:	Anti-ACE2 (RABBIT) Antibody - 600-401-X60
Item No.:	600-401-X60
Size:	100 µg
Applications:	ELISA, IF, IHC, WB
Reactivity:	Human, Mouse, Rat
Host Species:	Rabbit

Product Details

Background:	Angiotensin-converting enzyme 2 (ACE2) plays a central role in vascular, renal, and myocardial physiology. In contrast to its homolog ACE, ACE2 expression is restricted to heart, kidney, and testis. Recently, ACE2 has also been shown to be a functional receptor of the SARS coronavirus. The normal function of ACE2 is to convert the inactive vasoconstrictor angiotensin I (AngI) to Ang1-9 and the active form AngII to Ang1-7, unlike ACE, which converts AngI to AngII. While the role of these vasoactive peptides is not well understood, lack of ACE2 expression in ace2-/ace2- mice leads to severely reduced cardiac contractility, indicating its importance in regulating heart function.
Synonyms:	ACE2 Antibody, ACEH, Angiotensin-converting enzyme 2, ACE-related carboxypeptidase, ACEH
Host Species:	Rabbit
Clonality:	Polyclonal
Format:	IgG

Target Details

Gene Name:	ACE2
Reactivity:	Human, Mouse, Rat
Immunogen Type:	Conjugated Peptide
Immunogen:	Anti-ACE2 antibody was prepared from whole rabbit serum produced by repeated immunizations with a synthetic peptide corresponding to amino acids near the internal region of human ACE2.

Purity/Specificity: Anti-ACE2 Antibody was affinity purified from monospecific antiserum by immunoaffinity chromatography. Predicted species reactivity based on immunogen sequence: Mouse: (93%), Rat: (93%), Bovine: (93%). Anti-ACE2 has no cross response to ACE1.

Relevant Links:

- [UniProtKB - Q9BYF1](#)
- [GeneID - 59272](#)
- [NCBI - NP_068576](#)

Application Details

Tested Applications: ELISA, IF, IHC, WB

Application Note: Anti-ACE2 Antibody has been tested for use in ELISA, Immunofluorescence, Immunohistochemistry and Western Blotting. IHC and WB validated in human, mouse, and rat samples, IF validated in human samples. Expect a band at ~93 kDa in size corresponding to ACE2 protein by Western Blotting in the appropriate cell lysate or extract. Specific conditions for reactivity should be optimized by the end user.

Assay Dilutions: All assays should be optimized by the user. Recommended dilutions (if any) may be listed below.

ELISA: 1:5000 - 1:20,000

IF: 20µg/mL

IHC: 2µg/mL

WB: 0.5-2µg/mL

Formulation

Physical State: Liquid (sterile filtered)

Concentration: 1.0 mg/mL by UV absorbance at 280 nm

Buffer: 0.01 M Sodium Phosphate, 0.25 M Sodium Chloride, pH 7.2

Preservative: 0.02% (w/v) Sodium Azide

Stabilizer: None

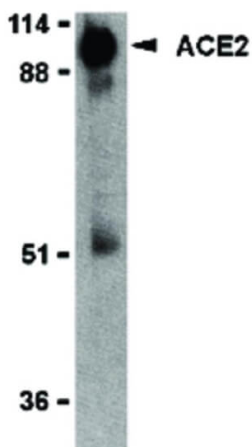
Shipping & Handling

Shipping Condition: Dry Ice

Storage Condition: Store vial at -20° C prior to opening. Aliquot contents and freeze at -20° C or below for extended storage. Avoid cycles of freezing and thawing. Centrifuge product if not completely clear after standing at room temperature. This product is stable for several weeks at 4° C as an undiluted liquid. Dilute only prior to immediate use.

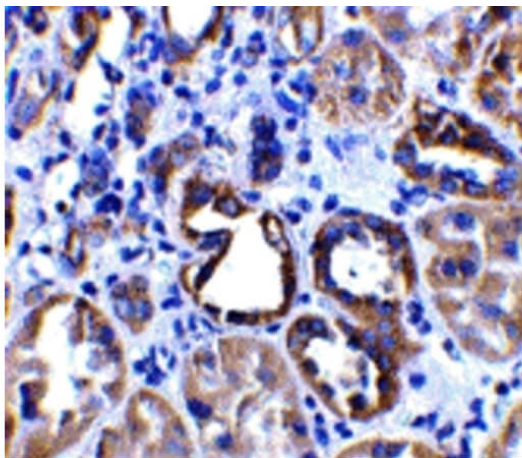
Expiration: Expiration date is one (1) year from date of receipt.

Images



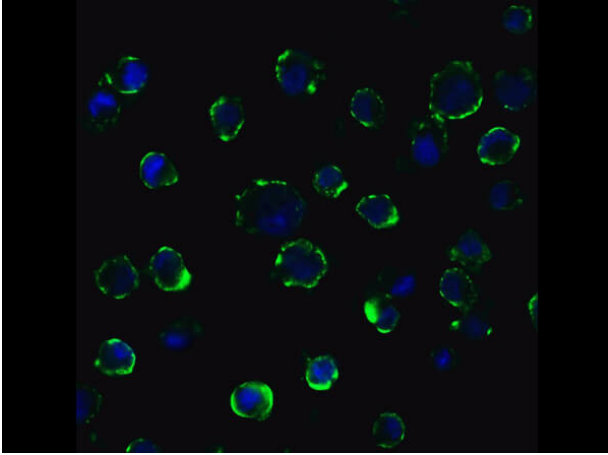
Western Blot

Western Blot of ACE2 antibody. Load: human kidney lysate 35 µg per lane. Primary antibody: ACE2 antibody at 2 µg/ml for overnight at 4°C. Secondary antibody: Peroxidase rabbit secondary antibody at 1:10,000 for 45 min at RT. Block: 5% BLOTTO overnight at 4°C. Predicted/Observed size: 92 kDa, 95 kDa for ACE2. Other band(s): ACE2 splice variants and isoforms.

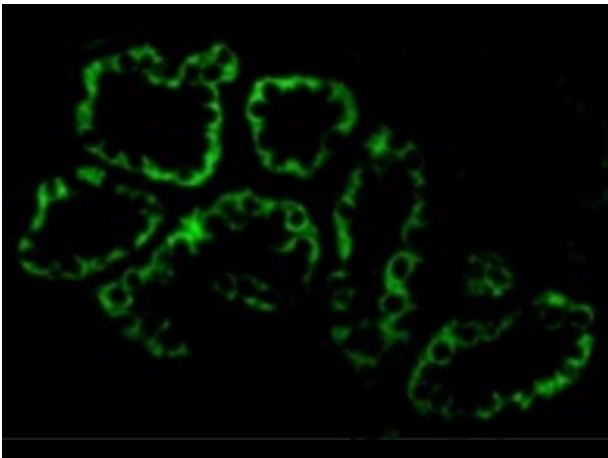


Immunohistochemistry

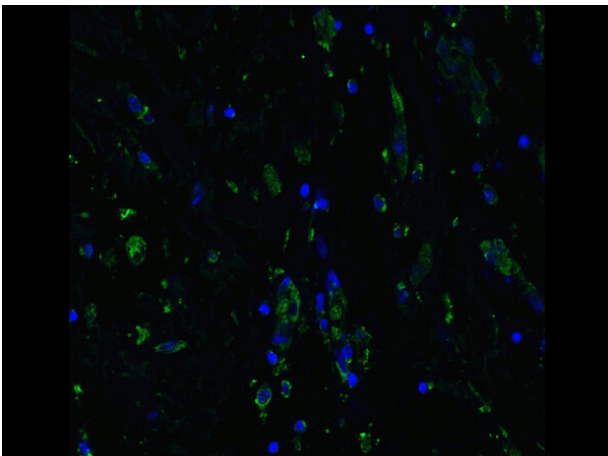
Immunohistochemistry of ACE2 Antibody. Tissue: paraffin-embedded human kidney tissue. Fixation: formaldehyde and blocked with 10% serum for 1 h at RT. Antigen retrieval: heat mediation with a citrate buffer (pH6). Primary Antibody: Anti-ACE2 at 2µg/ml overnight at 2-8°C. Secondary Antibody: Goat anti-rabbit IgG H&L (HRP) at 1:250 secondary. Counter stained with Hematoxylin.

**Immunofluorescence Microscopy**

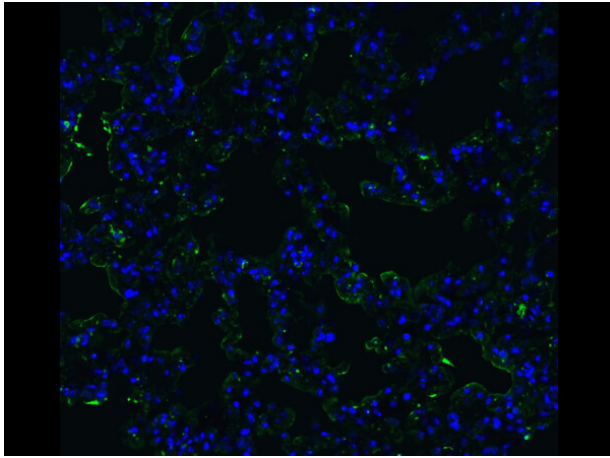
Immunofluorescence of Anti-ACE2 Antibody. Tissue: Caco2 Cells. Fixation: 4% PFA. Primary Antibody: Anti-ACE2 at 20 μ g/mL. Secondary Antibody: Goat anti-rabbit IgG secondary antibody at 1:500 dilution (green) and DAPI counterstain (blue). Image showing membrane staining on Caco2 cells.

**Immunofluorescence Microscopy**

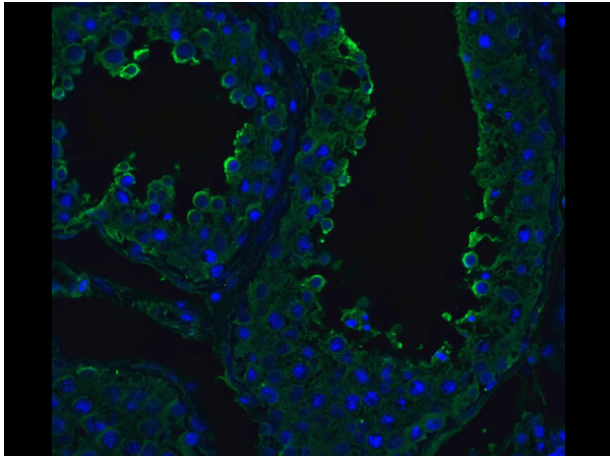
Immunofluorescence of Anti-ACE2 Antibody. Tissue: Human Kidney Tissue. Fixation: 4% PFA. Primary Antibody: Anti-ACE2 at 20 μ g/mL. Secondary Antibody: Goat anti-rabbit IgG secondary antibody at 1:500 dilution (green).

**Immunofluorescence Microscopy**

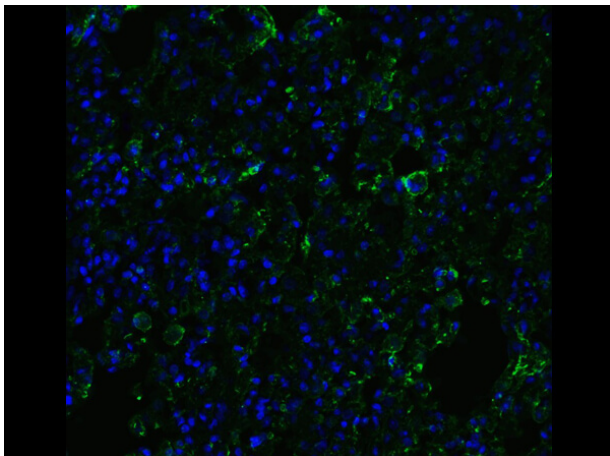
Immunofluorescence of Anti-ACE2 Antibody. Tissue: Human Lung Tissue. Fixation: 4% PFA. Primary Antibody: Anti-ACE2 at 20 μ g/mL. Secondary Antibody: Goat anti-rabbit IgG secondary antibody at 1:500 dilution (green) and DAPI counterstain (blue).

**Immunofluorescence Microscopy**

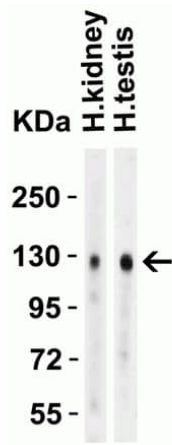
Immunofluorescence of Anti-ACE2 Antibody. Tissue: Mouse Lung Tissue. Fixation: 4% PFA. Primary Antibody: Anti-ACE2 at 20 μ g/mL. Secondary Antibody: Goat anti-rabbit IgG secondary antibody at 1:500 dilution (green) and DAPI counterstain (blue).

**Immunofluorescence Microscopy**

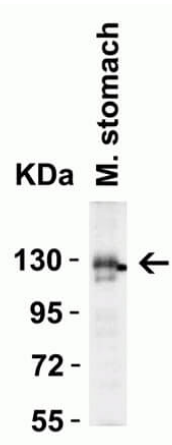
Immunofluorescence of Anti-ACE2 Antibody. Tissue: Human Testis Tissue. Fixation: 4% PFA. Primary Antibody: Anti-ACE2 at 20 μ g/mL. Secondary Antibody: Goat anti-rabbit IgG secondary antibody at 1:500 dilution (green) and DAPI counterstain (blue).

**Immunofluorescence Microscopy**

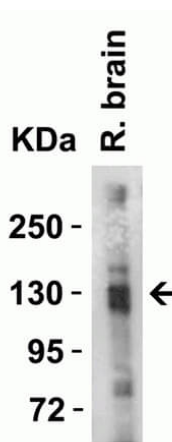
Immunofluorescence of Anti-ACE2 Antibody. Tissue: Rat Lung Tissue. Fixation: 4% PFA. Primary Antibody: Anti-ACE2 at 20 μ g/mL. Secondary Antibody: Goat anti-rabbit IgG secondary antibody at 1:500 dilution (green) and DAPI counterstain (blue).

**Western Blot**

Western Blot of Rabbit anti-ACE2 antibody. Lane 1: Human Kidney Lysate. Lane 2: Human Testis Lysate. Load: 15 μ g per lane. Primary antibody: ACE2 antibody 4 μ g/mL for 1hr at RT. Secondary antibody: Goat anti-Rabbit secondary HRP antibody at 1:10000 dilution. Block: 5% BLOTTO/TBST. Predicted MW: ~93kDa. Observed MW: ~130kDa.

**Western Blot**

Western Blot of Rabbit anti-ACE2 antibody. Lane 1: Mouse Stomach Lysate. Load: 15 μ g per lane. Primary antibody: ACE2 antibody 4 μ g/mL for 1hr at RT. Secondary antibody: Goat anti-Rabbit secondary HRP antibody at 1:10000 dilution. Block: 5% BLOTTO/TBST. Predicted MW: ~93kDa. Observed MW: ~130kDa.

**Western Blot**

Western Blot of Rabbit anti-ACE2 antibody. Lane 1: Rat Brain Lysate. Load: 15 μ g per lane. Primary antibody: ACE2 antibody 4 μ g/mL for 1hr at RT. Secondary antibody: Goat anti-Rabbit secondary HRP antibody at 1:10000 dilution. Block: 5% BLOTTO/TBST. Predicted MW: ~93kDa. Observed MW: ~130kDa.

References

- Zorad S et al. Angiotensin I and II Stimulate Cell Invasion of SARS-CoV-2: Potential Mechanism via Inhibition of ACE2 Arm of RAS. *Physiol Res.* (2024)

Disclaimer

This product is for research use only and is not intended for therapeutic or diagnostic applications. Please contact a technical service representative for more information. All products of animal origin manufactured by Rockland Immunochemicals are derived from starting materials of North American origin. Collection was performed in United States Department of Agriculture (USDA) inspected facilities and all materials have been inspected and certified to be free of disease and suitable for exportation. All properties listed are typical characteristics and are not specifications. All suggestions and data are offered in good faith but without guarantee as conditions and methods of use of our products are beyond our control. All claims must be made within 30 days following the date of delivery. The prospective user must determine the suitability of our materials before adopting them on a commercial scale. Suggested uses of our products are not recommendations to use our products in violation of any patent or as a license under any patent of Rockland Immunochemicals, Inc. If you require a commercial license to use this material and do not have one, then return this material, unopened to: Rockland Inc., P.O. BOX 5199, Limerick, Pennsylvania, USA.