

Datasheet for 600-401-X56**ABCA7 Antibody****Overview**

Description:	Anti-ABCA7 (RABBIT) Antibody - 600-401-X56
Item No.:	600-401-X56
Size:	100 µg
Applications:	ELISA, IF, IHC, WB
Reactivity:	Human
Host Species:	Rabbit

Product Details

Background:	ATP-binding cassette (ABC) transporters are an evolutionarily conserved family that use ATP hydrolysis to catalyze the transport of various molecules across cell membranes. They are divided into seven distinct subfamilies (ABC1, MDR/TAP, MRP, ALD, OABP, GCN20, White). ABCA7, a member of the ABC1 subfamily, is a full-size ABC transporter consisting of two sets of the multiple membrane-spanning domains plus the Walker motifs for the ATP interaction. ABCA7 shows the highest homology to ABCA1, an essential molecule for cholesterol homeostasis. The high expression levels of ABCA7 in peripheral leukocytes, thymus, spleen and bone marrow suggests a role in the immune system lipid homeostasis.
Synonyms:	ABCA7 Antibody, ABCX, ABCA-SSN, ATP-binding cassette sub-family A member 7
Host Species:	Rabbit
Clonality:	Polyclonal
Format:	IgG

Target Details

Gene Name:	ABCA7
Reactivity:	Human
Immunogen Type:	Conjugated Peptide
Immunogen:	Anti-ABCA7 antibody was prepared from whole rabbit serum produced by repeated immunizations with an 18 amino acid synthetic peptide near the N-terminus of human ABCA7.

Purity/Specificity: Anti-ABCA7 Antibody was affinity purified from monospecific antiserum by immunoaffinity chromatography. ABCA7 antibody is human specific. At least two alternatively spliced transcript variants encoding distinct isoforms have been observed.

Relevant Links:

- [UniProtKB - Q8IZY2](#)
- [GeneID - 10347](#)
- [NCBI - NP_061985](#)

Application Details

Tested Applications: ELISA, IF, IHC, WB

Application Note: Anti-ABCA7 Antibody has been tested for use in ELISA, Immunocytochemistry, Immunohistochemistry, Immunofluorescence and Western Blotting. Specific conditions for reactivity should be optimized by the end user. Expect a band at ~234 kDa in size corresponding to ABCA7 protein by Western Blotting in the appropriate cell lysate or extract.

Assay Dilutions: All assays should be optimized by the user. Recommended dilutions (if any) may be listed below.

ELISA: 1:10,000 - 1:20,000

IF: 5 µg/mL

IHC: 5 µg/mL

WB: 1-2 µg/mL

Formulation

Physical State: Liquid (sterile filtered)

Concentration: 1 mg/mL by UV absorbance at 280 nm

Buffer: 0.01 M Sodium Phosphate, 0.25 M Sodium Chloride, pH 7.2

Preservative: 0.02% (w/v) Sodium Azide

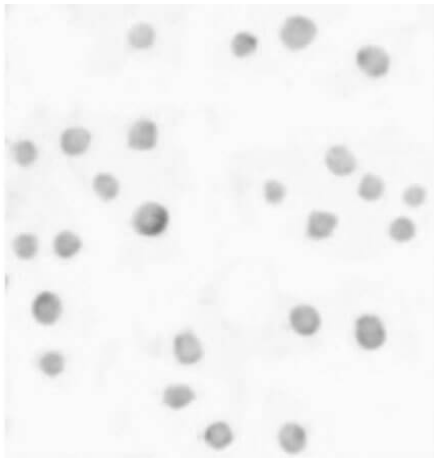
Stabilizer: None

Shipping & Handling

Shipping Condition: Dry Ice

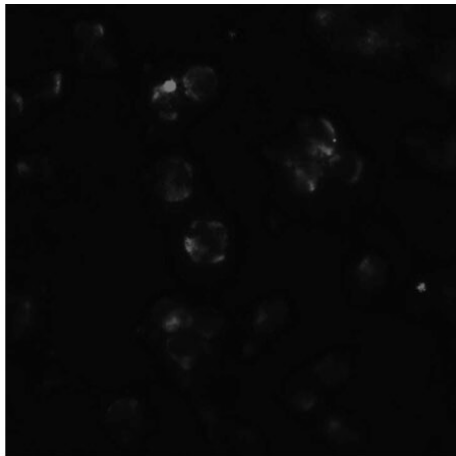
Storage Condition:	Store vial at -20° C prior to opening. Aliquot contents and freeze at -20° C or below for extended storage. Avoid cycles of freezing and thawing. Centrifuge product if not completely clear after standing at room temperature. This product is stable for several weeks at 4° C as an undiluted liquid. Dilute only prior to immediate use.
Expiration:	Expiration date is one (1) year from date of receipt.

Images



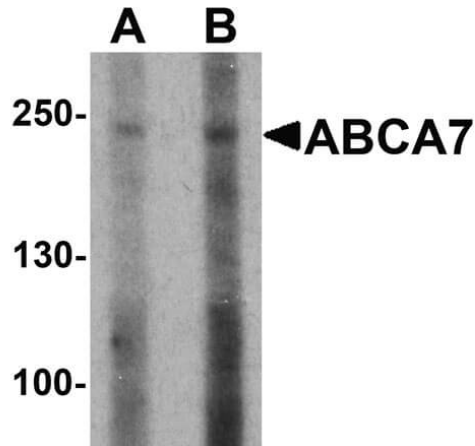
Immunohistochemistry

Immunocytochemistry of Rabbit anti-ABCA7 antibody. Tissue: 293 cells. Primary antibody: ABCA7 antibody at 5 µg/mL. Secondary antibody: Rabbit secondary antibody at 1:5,000. Localization: ABCA7 is a multi-pass membrane protein for the cell membrane, Golgi apparatus membrane and the early endosome membrane.



Immunofluorescence Microscopy

Immunofluorescence Microscopy of Rabbit anti-ABCA7 antibody. Tissue: 293 cells. Primary antibody: ABCA7 antibody at 20 µg/mL. Secondary antibody: Fluorescein rabbit secondary antibody at 1:20,000. Localization: ABCA7 is a multi-pass membrane protein for the cell membrane, Golgi apparatus membrane and the early endosome membrane.

**Western Blot**

Western Blot of Rabbit anti-ABCA7 antibody. Lane A: 293 cell lysate with ABCA7 antibody at 1µg/mL. Lane B: 293 cell lysate with ABCA7 antibody at 2µg/mL. Primary antibody: ABCA7 antibody. Secondary antibody: Rabbit secondary antibody. Block: 5% BLOTTO. Predicted/Observed size: 236 kDa, 240 kDa for ABCA7.

Disclaimer

This product is for research use only and is not intended for therapeutic or diagnostic applications. Please contact a technical service representative for more information. All products of animal origin manufactured by Rockland Immunochemicals are derived from starting materials of North American origin. Collection was performed in United States Department of Agriculture (USDA) inspected facilities and all materials have been inspected and certified to be free of disease and suitable for exportation. All properties listed are typical characteristics and are not specifications. All suggestions and data are offered in good faith but without guarantee as conditions and methods of use of our products are beyond our control. All claims must be made within 30 days following the date of delivery. The prospective user must determine the suitability of our materials before adopting them on a commercial scale. Suggested uses of our products are not recommendations to use our products in violation of any patent or as a license under any patent of Rockland Immunochemicals, Inc. If you require a commercial license to use this material and do not have one, then return this material, unopened to: Rockland Inc., P.O. BOX 5199, Limerick, Pennsylvania, USA.