

**Datasheet for 600-401-X40****PHF8 Antibody****Overview**

<b>Description:</b>	Anti-PHF8 (RABBIT) Antibody - 600-401-X40
<b>Item No.:</b>	600-401-X40
<b>Size:</b>	50 µg
<b>Applications:</b>	ELISA, WB
<b>Reactivity:</b>	Human, Mouse
<b>Host Species:</b>	Rabbit

**Product Details**

<b>Background:</b>	PHD finger protein 8 is a jumonji domain containing protein. Like other members of the jumonji family, PHF8 may therefore play a role in histone demethylation. Mutations in PHF8 lead to Siderius type X-linked mental retardation (MRXSSD), a mild to borderline type of mental retardation. Anti-PHF8 Antibody is ideal for research in Epigenetics and Neuroscience.
<b>Synonyms:</b>	Histone lysine demethylase PHF8, PHD finger protein 8, ZNF422
<b>Host Species:</b>	Rabbit
<b>Clonality:</b>	Polyclonal
<b>Format:</b>	IgG

**Target Details**

<b>Gene Name:</b>	PHF8
<b>Reactivity:</b>	Human, Mouse
<b>Immunogen Type:</b>	Conjugated Peptide
<b>Immunogen:</b>	Anti-PHF8 Antibody was produced in rabbits by repeated immunizations with three different synthetic peptides containing sequences from human PHF8.
<b>Purity/Specificity:</b>	Anti-PHF8 Antibody was purified by affinity purification. This product reacts with human PHF8. Cross reactivity with PHF8 from species other than human is not known.
<b>Relevant Links:</b>	<ul style="list-style-type: none"><li>• <a href="#">UniProtKB - Q9UPP1</a></li></ul>

- [GenelD - 23133](#)
- [NCBI - NP\\_001171825.1](#)

## Application Details

<b>Tested Applications:</b>	ELISA, WB
<b>Application Note:</b>	Anti-PHF8 Antibody is tested for ELISA and Western Blots. Specific conditions for reactivity should be optimized by the end user. Expect a band approximately 115 kDa in the appropriate cell lysate or extract.
<b>Assay Dilutions:</b>	All assays should be optimized by the user. Recommended dilutions (if any) may be listed below.
<b>ELISA:</b>	1:100 - 1:500
<b>WB:</b>	1:1,000

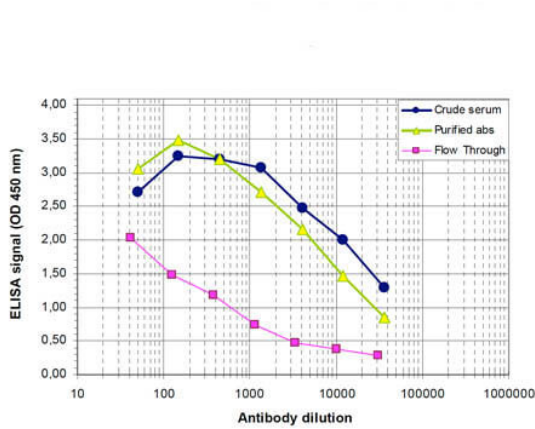
## Formulation

<b>Physical State:</b>	Liquid (sterile filtered)
<b>Concentration:</b>	1.3 mg/ml by UV absorbance at 280 nm
<b>Buffer:</b>	0.01 M Sodium Phosphate, 0.25 M Sodium Chloride, pH 7.2
<b>Preservative:</b>	0.05% (w/v) Sodium Azide and 0.05% ProClin 300
<b>Stabilizer:</b>	None

## Shipping & Handling

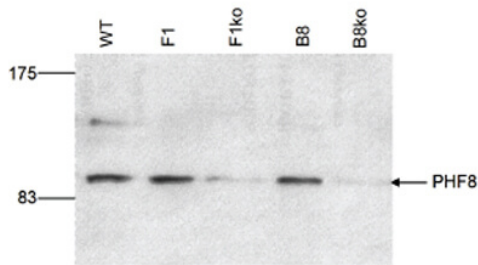
<b>Shipping Condition:</b>	Dry Ice
<b>Storage Condition:</b>	Store vial at -20° C prior to opening. Aliquot contents and freeze at -20° C or below for extended storage. Avoid cycles of freezing and thawing. Centrifuge product if not completely clear after standing at room temperature. This product is stable for several weeks at 4° C as an undiluted liquid. Dilute only prior to immediate use.
<b>Expiration:</b>	Expiration date is one (1) year from date of receipt.

## Images



**ELISA**

ELISA results of Rabbit anti-PHF8 antibody. Antigen: human PHF8. Coating amount: 0.1 µg per well. Primary antibody: anti-PHF8 antibody, crude serum, and flow through. Dilution series: serial dilution. Estimated Antibody Titer to be 1:6,500. Secondary antibody: Peroxidase anti-Rabbit secondary antibody at 1:20,000. Substrate: TMB (p/n TMBE-1000).



**Western Blot**

Western Blot results of Rabbit anti-PHF8 antibody. Lane 1: E14TG2A mouse embryonic stem nuclear extracts wild-type. Lane 2: E14TG2A nuclear extracts clone F1. Lane 3: E14TG2A nuclear extracts clone F1 (KO). Lane 4: E14TG2A nuclear extracts clone B8. Lane 5: E14TG2A nuclear extracts clone B8 (KO). Load: 135 µg per lane. Primary Antibody: anti-PHF8 antibody at 1:1,000 overnight at 4°C. Secondary Antibody: anti-rabbit HRP 1:10,000 for 1hr at RT. Block: TBS-Tween / 5% BLOTTO.

**Disclaimer**

This product is for research use only and is not intended for therapeutic or diagnostic applications. Please contact a technical service representative for more information. All products of animal origin manufactured by Rockland Immunochemicals are derived from starting materials of North American origin. Collection was performed in United States Department of Agriculture (USDA) inspected facilities and all materials have been inspected and certified to be free of disease and suitable for exportation. All properties listed are typical characteristics and are not specifications. All suggestions and data are offered in good faith but without guarantee as conditions and methods of use of our products are beyond our control. All claims must be made within 30 days following the date of delivery. The prospective user must determine the suitability of our materials before adopting them on a commercial scale. Suggested uses of our products are not recommendations to use our products in violation of any patent or as a license under any patent of Rockland Immunochemicals, Inc. If you require a commercial license to use this material and do not have one, then return this material, unopened to: Rockland Inc., P.O. BOX 5199, Limerick, Pennsylvania, USA.