

Datasheet for 600-401-X28

SNAP25 Phospho S187 Antibody**Overview**

Description:	Anti-SNAP25 pS187 (RABBIT) Antibody - 600-401-X28
Item No.:	600-401-X28
Size:	100 µL
Applications:	WB
Reactivity:	Mouse, Rat
Host Species:	Rabbit

Product Details

Background: SNAP25 (Synaptosomal associated protein of 25 kDa) is a presynaptic plasma membrane protein that is widely distributed throughout the brain and involved in the regulation of neurotransmitter release. Decreased levels of SNAP25 have been found in the brains of patients with Down Syndrome and Alzheimer's Disease. In addition, a significant reduction in the hippocampal expression of SNAP25 has also been found in patients with Schizophrenia. Increasing evidence suggests that SNAP-25 also modulates various ion channels, including voltage gated calcium channels (VGCCs). Activation of PKC results in the phosphorylation of SNAP-25 on ser187. Phosphorylation of SNAP25 on ser187 is believed to cause inhibition of VGCC. Since ser187 phosphorylation is transiently induced by neuronal activity, SNAP25 creates a negative feedback mechanism for controlling neuronal excitability. SNAP25 pS187 Antibody is ideal for researchers interested in neuroscience research.

Synonyms:	Synaptosomal-associated protein 25, SNAP-25, Super Protein, SUP, Synaptosoma-associated 25 kDa protein
Host Species:	Rabbit
Clonality:	Polyclonal
Format:	IgG

Target Details

Gene Name:	Snap25
Reactivity:	Mouse, Rat

PTM Specificity:	Phosphorylation
Immunogen Type:	Conjugated Peptide
Immunogen:	Anti-Phospho-Ser187 SNAP25 Antibody was produced in rabbits by repeated immunizations with a synthetic phospho-peptide corresponding to amino acid residues surrounding Ser187 of rat SNAP25 conjugated to KLH.
Purity/Specificity:	Anti-Phospho-Ser187 SNAP25 Antibody was prepared from monospecific antiserum by immunoaffinity chromatography using phospho peptide coupled to agarose beads followed by solid phase adsorption(s) against non-phospho peptide and non-specific peptide to remove any unwanted reactivities. Assay by immunoelectrophoresis resulted in a single precipitin arc against anti-Rabbit Serum. This antibody is specific for phosphorylated SNAP25. Minimal reactivity occurs against non-phosphorylated SNAP25. Reactivity against SNAP25 occurs from rat sources. However, reactivity is also expected against guinea pig, human, non-human primate, zebra fish based on 100% sequence homology.
Relevant Links:	<ul style="list-style-type: none">• UniProtKB - P60881• GeneID - 25012• NCBI - NP_001257504.1

Application Details

Tested Applications:	WB
Application Note:	Anti-Phospho-Ser187 SNAP25 Antibody is tested for Western Blots and is specific for the ~25 kDa SNAP25 protein phosphorylated at Ser187 in Western blots. Immunolabeling is completely blocked by blocked lambda-Phosphatase. Specific conditions for reactivity should be optimized by the end user.
Assay Dilutions:	All assays should be optimized by the user. Recommended dilutions (if any) may be listed below.
ELISA:	1:10,000
WB:	1:1000

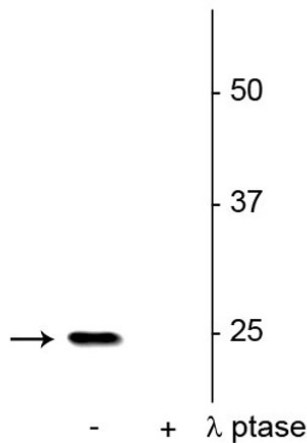
Formulation

Physical State:	Liquid (sterile filtered)
Buffer:	0.01 M HEPES, 0.15 M Sodium Chloride, pH 7.5
Preservative:	None
Stabilizer:	0.1 mg/ml Bovine Serum Albumin (BSA) - IgG and Protease free, 50% (v/v) Glycerol

Shipping & Handling

Shipping Condition:	Dry Ice
Storage Condition:	Store vial at -20° C prior to opening in undiluted aliquots. Aliquot contents and freeze at -20° C or below for extended storage. Avoid cycles of freezing and thawing. Centrifuge product if not completely clear after standing at room temperature.
Expiration:	Expiration date is one (1) year from date of receipt.

Images



Western Blot

Western blot of Anti-SNAP25 pS187 Antibody.
Rat hippocampal lysate showing specific immunolabeling of the ~25 kDa SNAP25 phosphorylated at Ser187 in the first lane (-). Phosphospecificity is shown in the second lane (+) where the immunolabeling is completely eliminated by lysate treatment with lambda phosphatase (λ-Ptase, 400 units/100ul lysate for 30 minutes, RT).

Disclaimer

This product is for research use only and is not intended for therapeutic or diagnostic applications. Please contact a technical service representative for more information. All products of animal origin manufactured by Rockland Immunochemicals are derived from starting materials of North American origin. Collection was performed in United States Department of Agriculture (USDA) inspected facilities and all materials have been inspected and certified to be free of disease and suitable for exportation. All properties listed are typical characteristics and are not specifications. All suggestions and data are offered in good faith but without guarantee as conditions and methods of use of our products are beyond our control. All claims must be made within 30 days following the date of delivery. The prospective user must determine the suitability of our materials before adopting them on a commercial scale. Suggested uses of our products are not recommendations to use our products in violation of any patent or as a license under any patent of Rockland Immunochemicals, Inc. If you require a commercial license to use this material and do not have one, then return this material, unopened to: Rockland Inc., P.O. BOX 5199, Limerick, Pennsylvania, USA.