

Datasheet for 600-401-X15**Munc18-1 Phospho S241 Antibody****Overview**

Description:	Anti-Munc18-1 pS241 (RABBIT) Antibody - 600-401-X15
Item No.:	600-401-X15
Size:	100 µL
Applications:	WB
Reactivity:	Mouse
Host Species:	Rabbit

Product Details

Background:	Munc-18 (mammalian homologue of Unc-18) is a protein that is thought to be involved in regulating exocytosis due, at least in part, to its ability to bind syntaxin. Munc18-1 is a neuron-specific member of the Sec1/Munc18 protein family that binds to syntaxin1A and is thought to stabilize the complex. The function of Munc18-1 is thought to be regulated by phosphorylation. Munc18-1 pS241 Antibody is ideal for researchers interested in neuroscience research.
Synonyms:	Syntaxin-binding protein 1, Protein unc-18 homolog 1, Unc18-1, Protein unc-18 homolog A, Unc-18A
Host Species:	Rabbit
Clonality:	Polyclonal
Format:	IgG

Target Details

Gene Name:	Stxbp1
Reactivity:	Mouse
PTM Specificity:	Phosphorylation
Immunogen Type:	Conjugated Peptide
Immunogen:	Anti-Phospho-Ser241 Munc18-1 Antibody was produced in rabbits by repeated immunizations with a synthetic phospho-peptide corresponding to amino acid residues surrounding Ser241 of mouse Munc-18-1 protein conjugated to KLH.

Purity/Specificity: Anti-Phospho-Ser241 Munc18-1 Antibody is directed against Munc18-1 protein phosphorylated at S421. The antibody was prepared from monospecific antiserum by immunoaffinity chromatography using phospho peptide coupled to agarose beads followed by solid phase adsorption(s) against non-phospho peptide and non-specific peptide to remove any unwanted reactivities. Assay by immunoelectrophoresis resulted in a single precipitin arc against anti-Rabbit Serum. This antibody is specific for phosphorylated Munc18-1. Minimal reactivity occurs against non-phosphorylated Munc18-1. Reactivity against Munc18-1 occurs from mouse sources. However, reactivity is also expected against bovine, canine, chicken, human, non-human primates, rat, sheep based on 100% sequence homology.

Relevant Links:

- [UniProtKB - O08599](#)
- [GeneID - 20910](#)
- [NCBI - NP_001107041.1](#)

Application Details

Tested Applications:	WB
Application Note:	Anti-Phospho-Ser241 Munc18-1 Antibody is tested for Western Blots and is specific for the ~65 kDa Munc18-1 protein phosphorylated at Ser241. Immunolabeling is blocked by the treatment of the lysate with lambda phosphatase (30 minutes, 800 units / 1 mg protein). Specific conditions for reactivity should be optimized by the end user.
Assay Dilutions:	All assays should be optimized by the user. Recommended dilutions (if any) may be listed below.
ELISA:	1:10,000
WB:	1:1000

Formulation

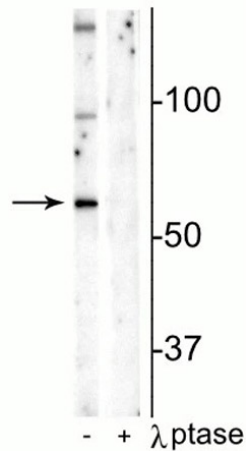
Physical State:	Liquid (sterile filtered)
Buffer:	0.01 M HEPES, 0.15 M Sodium Chloride, pH 7.5
Preservative:	None
Stabilizer:	0.1 mg/ml Bovine Serum Albumin (BSA) - IgG and Protease free, 50% (v/v) Glycerol

Shipping & Handling

Shipping Condition:	Wet Ice
----------------------------	---------

Storage Condition:	Store vial at -20° C prior to opening in undiluted aliquots. Aliquot contents and freeze at -20° C or below for extended storage. Avoid cycles of freezing and thawing. Centrifuge product if not completely clear after standing at room temperature.
Expiration:	Expiration date is one (1) year from date of receipt.

Images



Western Blot

Western blot of Anti-Munc18-1 pS241 Antibody.
Mouse hippocampal lysate showing specific immunolabeling of the ~65 kDa Munc18-1 protein phosphorylated at Ser241 in the first lane (-). Phosphospecificity is shown in the second lane (+) where immunolabeling is completely eliminated by blot treatment with lambda phosphatase (λ -Ptase, 1200 units for 30 min).

Disclaimer

This product is for research use only and is not intended for therapeutic or diagnostic applications. Please contact a technical service representative for more information. All products of animal origin manufactured by Rockland Immunochemicals are derived from starting materials of North American origin. Collection was performed in United States Department of Agriculture (USDA) inspected facilities and all materials have been inspected and certified to be free of disease and suitable for exportation. All properties listed are typical characteristics and are not specifications. All suggestions and data are offered in good faith but without guarantee as conditions and methods of use of our products are beyond our control. All claims must be made within 30 days following the date of delivery. The prospective user must determine the suitability of our materials before adopting them on a commercial scale. Suggested uses of our products are not recommendations to use our products in violation of any patent or as a license under any patent of Rockland Immunochemicals, Inc. If you require a commercial license to use this material and do not have one, then return this material, unopened to: Rockland Inc., P.O. BOX 5199, Limerick, Pennsylvania, USA.