

Datasheet for 600-401-X05

eEF1A2 Phospho S358 Antibody**Overview**

Description:	Anti-EEF1A2 pS358 (RABBIT) Antibody - 600-401-X05
Item No.:	600-401-X05
Size:	100 µL
Applications:	WB
Reactivity:	Mouse
Host Species:	Rabbit

Product Details

Background:	Eukaryotic Elongation Factor eEF1A exists in two variant forms, eEF1A1 and eEF1A2. While eEF1A1 is almost ubiquitously expressed in humans, eEF1A2 is predominantly found in heart, brain, and skeletal muscle. Expression of eEF1A2 may have a role in ovarian cancer, as its expression is drastically increased in human ovarian tumors. Due to differences in structural models between the two isoforms, eEF1A1 and eEF1A2 likely have variant-specific phosphorylation sites. Ribosome-associated JNK phosphorylates Ser358 on eEF1A2 to promote degradation of newly synthesized polypeptides by the proteasome. eEF1A2 pS358 Antibody is ideal for researchers interested in cancer research.
Synonyms:	elongation factor 1-alpha 2, EF-1-alpha-2, Eukaryotic elongation factor 1 A-2, eEF1A-2, Statin-S1
Host Species:	Rabbit
Clonality:	Polyclonal
Format:	IgG

Target Details

Gene Name:	EEF1A2
Reactivity:	Mouse
PTM Specificity:	Phosphorylation
Immunogen Type:	Conjugated Peptide

Immunogen:	Anti-Phospho-Ser358 eEF1A2 Antibody was produced in rabbits by repeated immunizations with a synthetic phospho-peptide corresponding to amino acid residues surrounding Ser358 of human eEF1A2 conjugated to KLH.
Purity/Specificity:	Anti-Phospho-Ser358 eEF1A2 Antibody is directed against human eEF1A2 protein phosphorylated at S358. The antibody was prepared from monospecific antiserum by immunoaffinity chromatography using phospho peptide coupled to agarose beads followed by solid phase adsorption(s) against non-phospho peptide and non-specific peptide to remove any unwanted reactivities. Assay by immunoelectrophoresis resulted in a single precipitin arc against anti-Rabbit Serum. This antibody is specific for phosphorylated eEF1A2. Minimal reactivity occurs against non-phosphorylated eEF1A2. Reactivity against eEF1A2 occurs from mouse sources. However, reactivity is also expected against chicken, human, non-human primate, rat, sheep, and Xenopus based on 100% sequence homology.
Relevant Links:	<ul style="list-style-type: none">• UniProtKB - Q05639• GenelD - 1917• NCBI - NP_001949.1

Application Details

Tested Applications:	WB
Application Note:	Anti-Phospho-Ser358 eEF1A2 Antibody has been tested by Western Blots and is specific for the ~50 kDa eEF1A2 protein phosphorylated at Ser358. Immunolabeling of the eEF1A2 band is blocked by the treatment of the lysate with lambda phosphatase (30 minutes, 800 units / 1 mg protein). Specific conditions for reactivity should be optimized by the end user.
Assay Dilutions:	All assays should be optimized by the user. Recommended dilutions (if any) may be listed below.
ELISA:	1:10,000
WB:	1:1000

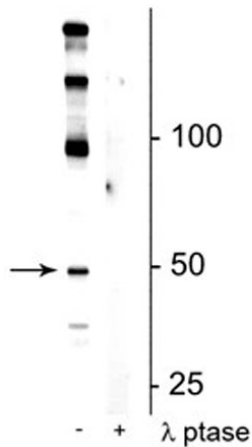
Formulation

Physical State:	Liquid (sterile filtered)
Concentration:	Titred value sufficient to run approximately 10 mini blots.
Buffer:	0.01 M HEPES, 0.15 M Sodium Chloride, pH 7.5
Preservative:	None
Stabilizer:	0.1 mg/ml Bovine Serum Albumin (BSA) - IgG and Protease free, 50% (v/v) Glycerol

Shipping & Handling

Shipping Condition:	Wet Ice
Storage Condition:	Store vial at -20° C prior to opening in undiluted aliquots. Aliquot contents and freeze at -20° C or below for extended storage. Avoid cycles of freezing and thawing. Centrifuge product if not completely clear after standing at room temperature.
Expiration:	Expiration date is one (1) year from date of receipt.

Images



Western Blot

Western blot of Anti-EEF1A2 pS358 Antibody.

Mouse hippocampal lysate showing specific immunolabeling of the ~50 kDa eEF1A2 protein phosphorylated at Ser358 in the first lane (-). Phosphospecificity is shown in the second lane (+) where immunolabeling is completely eliminated by lysate treatment with lambda phosphatase (λ -Ptase, 800 units/mg protein for 30 min).

Disclaimer

This product is for research use only and is not intended for therapeutic or diagnostic applications. Please contact a technical service representative for more information. All products of animal origin manufactured by Rockland Immunochemicals are derived from starting materials of North American origin. Collection was performed in United States Department of Agriculture (USDA) inspected facilities and all materials have been inspected and certified to be free of disease and suitable for exportation. All properties listed are typical characteristics and are not specifications. All suggestions and data are offered in good faith but without guarantee as conditions and methods of use of our products are beyond our control. All claims must be made within 30 days following the date of delivery. The prospective user must determine the suitability of our materials before adopting them on a commercial scale. Suggested uses of our products are not recommendations to use our products in violation of any patent or as a license under any patent of Rockland Immunochemicals, Inc. If you require a commercial license to use this material and do not have one, then return this material, unopened to: Rockland Inc., P.O. BOX 5199, Limerick, Pennsylvania, USA.