

Datasheet for 600-401-X02**DOPA Decarboxylase Antibody****Overview**

Description:	Anti-DOPA Decarboxylase, Human (RABBIT) Antibody - 600-401-X02
Item No.:	600-401-X02
Size:	100 µL
Reactivity:	Human, Rat, Bovine, Dog, Guinea Pig, Rabbit, Sheep
Host Species:	Rabbit

Product Details

Background:	DOPA decarboxylase (aromatic L-amino acid decarboxylase, AADC; DDC) catalyzes the second reaction in the biosynthesis of catecholamines and serotonin. It is also involved in the biosynthesis of trace amines. DDC antibodies can therefore be used as markers for dopaminergic, noradrenergic and serotonergic neurons in a variety of applications including depression, schizophrenia, Parkinson's disease and drug abuse. DOPA Decarboxylase Antibody is ideal for researchers interested in neuroscience research.
Synonyms:	Aromatic-L-amino-acid decarboxylase, AADC, DDC
Host Species:	Rabbit
Clonality:	Polyclonal
Format:	IgG

Target Details

Gene Name:	DDC
Reactivity:	Human, Rat, Bovine, Dog, Guinea Pig, Rabbit, Sheep
Immunogen Type:	Conjugated Peptide
Immunogen:	Anti-DOPA Decarboxylase Antibody was produced in rabbits by repeated immunizations with a synthetic peptide corresponding to amino acid residues from the N-terminal region of human DOPA decarboxylase (DDC) conjugated to KLH (keyhole limpet hemocyanin).
Purity/Specificity:	Anti-DOPA Decarboxylase Antibody was prepared from rabbit serum by affinity purification using an AminoLink® Plus column matrix to which purified recombinant bovine DDC was coupled.

Relevant Links:	<ul style="list-style-type: none">• UniProtKB - P20711• GeneID - 1644• NCBI - NP_000781.1
------------------------	---

Application Details

Application Note:	Anti-DOPA Decarboxylase Antibody is suitable for Western Blots and is specific for the ~55 kDa DDC protein. Specific conditions for reactivity should be optimized by the end user.
Assay Dilutions:	All assays should be optimized by the user. Recommended dilutions (if any) may be listed below.
ELISA:	1:10,000
WB:	1:1000

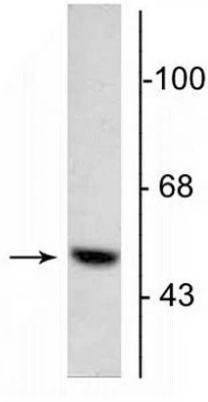
Formulation

Physical State:	Liquid (sterile filtered)
Buffer:	0.01 M HEPES, 0.15 M Sodium Chloride, pH 7.5
Preservative:	None
Stabilizer:	0.1 mg/ml Bovine Serum Albumin (BSA) - IgG and Protease free, 50% (v/v) Glycerol

Shipping & Handling

Shipping Condition:	Wet Ice
Storage Condition:	Store vial at -20° C prior to opening in undiluted aliquots. Aliquot contents and freeze at -20° C or below for extended storage. Avoid cycles of freezing and thawing. Centrifuge product if not completely clear after standing at room temperature. Dilute only prior to immediate use.
Expiration:	Expiration date is one (1) year from date of receipt.

Images

**Western Blot**

Western blot of Anti-DOPA antibody using 5 μ g of bovine adrenal medulla lysate showing specific immunolabeling of the ~55 kDa DOPA decarboxylase protein.

Disclaimer

This product is for research use only and is not intended for therapeutic or diagnostic applications. Please contact a technical service representative for more information. All products of animal origin manufactured by Rockland Immunochemicals are derived from starting materials of North American origin. Collection was performed in United States Department of Agriculture (USDA) inspected facilities and all materials have been inspected and certified to be free of disease and suitable for exportation. All properties listed are typical characteristics and are not specifications. All suggestions and data are offered in good faith but without guarantee as conditions and methods of use of our products are beyond our control. All claims must be made within 30 days following the date of delivery. The prospective user must determine the suitability of our materials before adopting them on a commercial scale. Suggested uses of our products are not recommendations to use our products in violation of any patent or as a license under any patent of Rockland Immunochemicals, Inc. If you require a commercial license to use this material and do not have one, then return this material, unopened to: Rockland Inc., P.O. BOX 5199, Limerick, Pennsylvania, USA.