

Datasheet for 600-401-X01**DGCR8 Phospho S377 Antibody****Overview**

Description:	Anti-DGCR8 pS377 (RABBIT) Antibody - 600-401-X01
Item No.:	600-401-X01
Size:	100 µL
Applications:	WB
Reactivity:	Human, Mouse
Host Species:	Rabbit

Product Details

Background:	The Drosha-DGCR8 microprocessor complex is required for microRNA (miRNA) biogenesis. DGCR8 (DiGeorge Syndrome Critical Region 8) recognizes the RNA substrate, whereas Drosha functions as the endonuclease. DGCR8, which contains two double-stranded RNA (dsRNA)-binding domains, interacts with the pri-miRNA and functions as the molecular anchor that measures the distance from the ds-RNA-ssRNA junction and directs Drosha cleavage 11bp away. The efficiency of Drosha cleavage increases in the presence of heme and promotes the formation of highly ordered DGCR8 structures upon binding to RNA. DGCR8 pS377 Antibody is ideal for researchers interested in neuroscience research.
Synonyms:	Microprocessor complex subunit DGCR8, DiGeorge syndrome critical region 8, C22orf12, DGCRK9
Host Species:	Rabbit
Clonality:	Polyclonal
Format:	IgG

Target Details

Gene Name:	DGCR8
Reactivity:	Human, Mouse
PTM Specificity:	Phosphorylation
Immunogen Type:	Conjugated Peptide

Immunogen:	Anti-Phospho-Ser377 DGCR8 Antibody was produced in rabbits by repeated immunizations with a synthetic phospho-peptide corresponding to amino acid residues surrounding Ser377 of human DGCR8 conjugated to KLH.
Purity/Specificity:	Anti-Phospho-Ser377 DGCR8 Antibody was prepared from rabbit serum by affinity purification via sequential chromatography on phospho- and dephosphopeptide affinity columns.
Relevant Links:	<ul style="list-style-type: none">• UniProtKB - Q8WYQ5• GeneID - 1644• NCBI - NP_001177255.1

Application Details

Tested Applications:	WB
Application Note:	Anti-Phospho-Ser377 DGCR8 Antibody is tested for Western Blots and is specific for the ~120 kDa DGCR8 protein phosphorylated at Ser377. Immunolabeling is blocked by the phosphopeptide used as the antigen but not by the corresponding dephosphopeptide. Specific conditions for reactivity should be optimized by the end user.
Assay Dilutions:	All assays should be optimized by the user. Recommended dilutions (if any) may be listed below.
ELISA:	1:10,000
WB:	1:1000

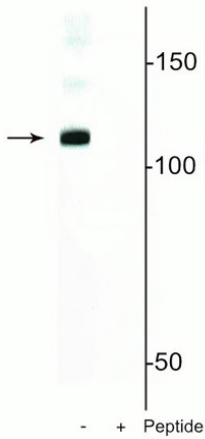
Formulation

Physical State:	Liquid (sterile filtered)
Buffer:	0.01 M HEPES, 0.15 M Sodium Chloride, pH 7.5
Preservative:	None
Stabilizer:	0.1 mg/ml Bovine Serum Albumin (BSA) - IgG and Protease free, 50% (v/v) Glycerol

Shipping & Handling

Shipping Condition:	Wet Ice
Storage Condition:	Store vial at -20° C prior to opening in undiluted aliquots. Aliquot contents and freeze at -20° C or below for extended storage. Avoid cycles of freezing and thawing. Centrifuge product if not completely clear after standing at room temperature. Dilute only prior to immediate use.
Expiration:	Expiration date is one (1) year from date of receipt.

Images



Western Blot

Western blot of Anti-DGCR8 pS377 antibody. Mouse nuclei lysate showing specific immunolabeling of the ~120 kDa DGCR8 protein phosphorylated at in the first lane (-). Phosphospecificity is shown in the second lane (+) where immunolabeling is blocked by preadsorption of the phosphopeptide used as the antigen, but not by the corresponding non-phosphopeptide (not shown).

Disclaimer

This product is for research use only and is not intended for therapeutic or diagnostic applications. Please contact a technical service representative for more information. All products of animal origin manufactured by Rockland Immunochemicals are derived from starting materials of North American origin. Collection was performed in United States Department of Agriculture (USDA) inspected facilities and all materials have been inspected and certified to be free of disease and suitable for exportation. All properties listed are typical characteristics and are not specifications. All suggestions and data are offered in good faith but without guarantee as conditions and methods of use of our products are beyond our control. All claims must be made within 30 days following the date of delivery. The prospective user must determine the suitability of our materials before adopting them on a commercial scale. Suggested uses of our products are not recommendations to use our products in violation of any patent or as a license under any patent of Rockland Immunochemicals, Inc. If you require a commercial license to use this material and do not have one, then return this material, unopened to: Rockland Inc., P.O. BOX 5199, Limerick, Pennsylvania, USA.