

## Datasheet for 600-401-W96

**BECLIN1 phospho S234 Antibody****Overview**

<b>Description:</b>	Anti-Beclin1 pS234 (RABBIT) Antibody - 600-401-W96
<b>Item No.:</b>	600-401-W96
<b>Size:</b>	100 µL
<b>Applications:</b>	WB, ELISA
<b>Reactivity:</b>	Human
<b>Host Species:</b>	Rabbit

**Product Details**

<b>Background:</b>	Beclin-1 plays a key role in tumor suppression and autophagy. It has been suggested that autophagy proteins such as beclin-1 can inhibit tumorigenesis and that decreased expression of these proteins may contribute to the development of human malignancies. Beclin-1 has been shown to interact with 14-3-3 proteins through Akt-mediated phosphorylation at Ser234. Beclin 1 pS234 Antibody is ideal for researchers interested in cancer research.
<b>Synonyms:</b>	Run domain Beclin-1 interacting and cysteine-rich containing protein, Rubicon, Beclin-1 associated RUN domain containing protein
<b>Host Species:</b>	Rabbit
<b>Clonality:</b>	Polyclonal
<b>Format:</b>	IgG

**Target Details**

<b>Gene Name:</b>	BECN1
<b>Reactivity:</b>	Human
<b>PTM Specificity:</b>	Phosphorylation
<b>Immunogen Type:</b>	Conjugated Peptide
<b>Immunogen:</b>	Anti-Phospho-Ser234 Beclin-1 Antibody was produced in rabbits by repeated immunizations with a synthetic phospho-peptide corresponding to amino acid residues surrounding Ser234 of human Beclin-1 conjugated to KLH.

**Purity/Specificity:** Anti-Beclin1 pS234 Antibody is directed against Beclin 1 protein phosphorylated at S234. The antibody was prepared from monospecific antiserum by immunoaffinity chromatography using phospho peptide coupled to agarose beads followed by solid phase adsorption(s) against non-phospho peptide and non-specific peptide to remove any unwanted reactivities. Assay by immunoelectrophoresis resulted in a single precipitin arc against anti-Rabbit Serum. This antibody is specific for phosphorylated beclin1. Minimal reactivity occurs against non-phosphorylated beclin1. Reactivity against Beclin 1 occurs from human sources. However, reactivity is also expected against bovine, canine, mouse, non-human primate, rat, and sheep.

**Relevant Links:**

- [UniProtKB - Q14457](#)
- [GeneID - 8678](#)
- [NCBI - NP\\_001300927.1](#)

## Application Details

<b>Tested Applications:</b>	WB
<b>Suggested Applications:</b>	ELISA (Based on references)
<b>Application Note:</b>	Anti-Phospho-Ser234 Beclin-1 Antibody is tested for WB. Expect a band at approximately ~60 kDa on specific lysates or tissues. Specific conditions for reactivity should be optimized by the end user. Immunolabeling of the Beclin-1 band is decreased in the Beclin-1 alanine substitution mutant.
<b>Assay Dilutions:</b>	All assays should be optimized by the user. Recommended dilutions (if any) may be listed below.
<b>ELISA:</b>	1:2,500
<b>WB:</b>	1:250

## Formulation

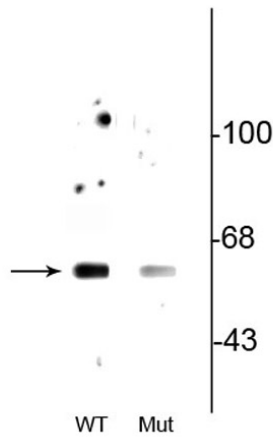
<b>Physical State:</b>	Liquid (sterile filtered)
<b>Buffer:</b>	0.01 M HEPES, 0.15 M Sodium Chloride, pH 7.5
<b>Preservative:</b>	None
<b>Stabilizer:</b>	0.1 mg/ml Bovine Serum Albumin (BSA) - IgG and Protease free, 50% (v/v) Glycerol

## Shipping & Handling

<b>Shipping Condition:</b>	Wet Ice
----------------------------	---------

<b>Storage Condition:</b>	Store vial at -20° C prior to opening in undiluted aliquots. Aliquot contents and freeze at -20° C or below for extended storage. Avoid cycles of freezing and thawing. Centrifuge product if not completely clear after standing at room temperature. Dilute only prior to immediate use.
<b>Expiration:</b>	Expiration date is one (1) year from date of receipt.

## Images



### Western Blot

Western blot of anti-Beclin pS234 antibody. Wild type (WT) beclin-1 expressed in HeLa cell lysate showing specific immunolabeling of beclin-1 phosphorylated at Ser234. This immunolabeling is decreased in the beclin-1 double alanine substitution mutant (S234A, S295A: Mut) expressed in HeLa cell lysate.

## References

- Xie Y et al. Assessment of posttranslational modifications of ATG proteins. *Methods Enzymol.* (2017)

## Disclaimer

This product is for research use only and is not intended for therapeutic or diagnostic applications. Please contact a technical service representative for more information. All products of animal origin manufactured by Rockland Immunochemicals are derived from starting materials of North American origin. Collection was performed in United States Department of Agriculture (USDA) inspected facilities and all materials have been inspected and certified to be free of disease and suitable for exportation. All properties listed are typical characteristics and are not specifications. All suggestions and data are offered in good faith but without guarantee as conditions and methods of use of our products are beyond our control. All claims must be made within 30 days following the date of delivery. The prospective user must determine the suitability of our materials before adopting them on a commercial scale. Suggested uses of our products are not recommendations to use our products in violation of any patent or as a license under any patent of Rockland Immunochemicals, Inc. If you require a commercial license to use this material and do not have one, then return this material, unopened to: Rockland Inc., P.O. BOX 5199, Limerick, Pennsylvania, USA.