

Datasheet for 600-401-R08**GDNF Antibody****Overview**

Description:	Anti-GDNF (RABBIT) Antibody - 600-401-R08
Item No.:	600-401-R08
Size:	100 µg
Applications:	IHC, WB
Reactivity:	Human, Rat
Host Species:	Rabbit

Product Details

Background: GDNF, Glial cell-derived neurotrophic factor, is a protein that, in humans, is encoded by the GDNF gene. GDNF is a small protein that potently promotes the survival of many types of neurons. GDNF is a founding member of the GDNF family of ligands (GFL). The GDNF gene is mapped to human chromosome 5p13.1-p12 by fluorescence in situ hybridization (FISH). This gene encodes a highly conserved neurotrophic factor. The recombinant form of this protein was shown to promote the survival and differentiation of dopaminergic neurons in culture, and was able to prevent apoptosis of motor neurons induced by axotomy. The encoded protein is processed to a mature secreted form that exists as a homodimer. The mature form of the protein is a ligand for the product of the RET (rearranged during transfection) protooncogene. This antibody is suitable for researchers interested in neuroscience research.

Synonyms:	Astrocyte-derived trophic factor,
Host Species:	Rabbit
Clonality:	Polyclonal
Format:	IgG

Target Details

Gene Name:	GDNF
Reactivity:	Human, Rat
Immunogen Type:	Conjugated Peptide

Immunogen:	GDNF affinity purified antibody was prepared from whole rabbit serum produced by repeated immunizations with a synthetic peptide corresponding to an internal region of human GDNF.
Purity/Specificity:	Anti-GDNF antibody is directed against human GDNF protein. The product was affinity purified from monospecific antiserum by immunoaffinity purification. A BLAST analysis was used to suggest reactivity with this protein from human, mouse, and rat based on homology for the immunogen sequence. Cross reactivity with GDNF from other sources has not been determined.
Relevant Links:	<ul style="list-style-type: none">• UniProtKB - P39905• GeneID - 2668• NCBI - NP_000505.1

Application Details

Tested Applications:	IHC, WB
Application Note:	Anti-GDNF is tested for Immunohistochemistry-P and Western Blotting. Specific conditions for reactivity should be optimized by the end user. Expect a band approximately ~23.7 kDa corresponding to the appropriate cell lysate or extract.
Assay Dilutions:	All assays should be optimized by the user. Recommended dilutions (if any) may be listed below.
IHC:	1:100-1:500
WB:	0.5µg/mL

Formulation

Physical State:	Lyophilized
Concentration:	0.5 mg/ml by UV absorbance at 280 nm
Buffer:	0.9mg NaCl, 0.2mg Na ₂ HPO ₄ , 0.05mg Na ₃
Preservative:	0.05mg Thimerosal
Stabilizer:	5mg BSA
Reconstitution Volume:	100 µL
Reconstitution Buffer:	Restore with deionized water (or equivalent)

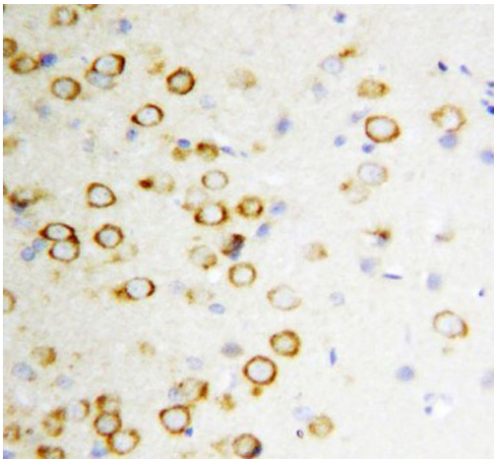
Shipping & Handling

Shipping Condition:	Wet Ice
----------------------------	---------

Storage Condition: Store vial at -20° C prior to opening. Aliquot contents and freeze at -20° C or below for extended storage. Avoid cycles of freezing and thawing. Centrifuge product if not completely clear after standing at room temperature. This product is stable for several weeks at 4° C as an undiluted liquid. Dilute only prior to immediate use.

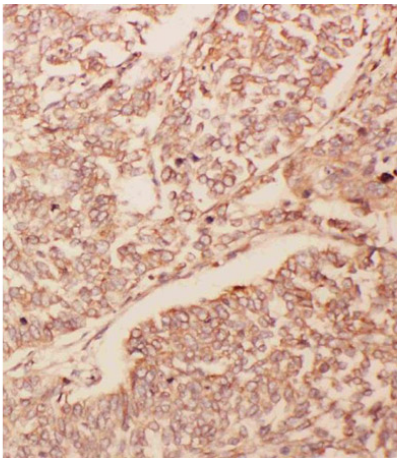
Expiration: Expiration date is one (1) year from date of receipt.

Images



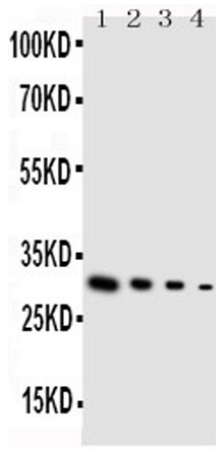
Immunohistochemistry

Immunohistochemistry of Anti-GDNF antibody.
Tissue: Rat Brain Tissue. IHC(P).



Immunohistochemistry

Immunohistochemistry of Anti-GDNF antibody.
Tissue: Human Lung Cancer Tissue. IHC(P).

**Western Blot**

Western blot of Anti-GDNF antibody.

Lysate/Load: Lane 1: Recombinant Human GDNF Protein -10ng, Lane 2: Recombinant Human GDNF Protein -5ng, Lane 3: Recombinant Human GDNF Protein -2.5ng, Lane 4: Recombinant Human GDNF Protein -1.25ng.

Disclaimer

This product is for research use only and is not intended for therapeutic or diagnostic applications. Please contact a technical service representative for more information. All products of animal origin manufactured by Rockland Immunochemicals are derived from starting materials of North American origin. Collection was performed in United States Department of Agriculture (USDA) inspected facilities and all materials have been inspected and certified to be free of disease and suitable for exportation. All properties listed are typical characteristics and are not specifications. All suggestions and data are offered in good faith but without guarantee as conditions and methods of use of our products are beyond our control. All claims must be made within 30 days following the date of delivery. The prospective user must determine the suitability of our materials before adopting them on a commercial scale. Suggested uses of our products are not recommendations to use our products in violation of any patent or as a license under any patent of Rockland Immunochemicals, Inc. If you require a commercial license to use this material and do not have one, then return this material, unopened to: Rockland Inc., P.O. BOX 5199, Limerick, Pennsylvania, USA.