

Datasheet for 600-401-R00**MAPK 8/9 Antibody****Overview**

Description:	Anti-MAPK 8/9 (RABBIT) Antibody - 600-401-R00
Item No.:	600-401-R00
Size:	100 µg
Applications:	IHC, WB
Reactivity:	Human, Mouse, Rat
Host Species:	Rabbit

Product Details

Background:	Mitogen-activated protein kinase 8 is an enzyme that in humans is encoded by the MAPK8 gene. The protein encoded by this gene is a member of the MAP kinase family. The International Radiation Hybrid Mapping Consortium mapped the MAPK8 gene to chromosome 10. The single long open reading frame encodes a putative protein kinase with a predicted mass of 44.2 kD. This kinase play a key role in T cell proliferation, apoptosis and differentiation. This antibody is suitable for researchers interested in apoptosis and neuroscience research.
Synonyms:	JNK-46,Stress-activated protein kinase 1c
Host Species:	Rabbit
Clonality:	Polyclonal
Format:	IgG

Target Details

Gene Name:	MAPK8
Reactivity:	Human, Mouse, Rat
Immunogen Type:	Conjugated Peptide
Immunogen:	MAPK8 affinity purified antibody was prepared from whole rabbit serum produced by repeated immunizations with a synthetic peptide corresponding to an internal region of human MAPK8.

Purity/Specificity: Anti-MAPK8 antibody is directed against human MAPK8 protein. The product was affinity purified from monospecific antiserum by immunoaffinity purification. A BLAST analysis was used to suggest reactivity with this protein from human, mouse, and rat based on 100% homology for the immunogen sequence. Cross reactivity with MAPK8 from other sources has not been determined.

Relevant Links:

- [UniProtKB - P45983](#)
- [GeneID - 5599](#)
- [NCBI - NP_001265476.1](#)

Application Details

Tested Applications: IHC, WB

Application Note: Anti-MAPK8 is tested for Immunohistochemistry-P and Western Blotting. Specific conditions for reactivity should be optimized by the end user. Expect a band approximately ~48.3 kDa corresponding to the appropriate cell lysate or extract.

Assay Dilutions: All assays should be optimized by the user. Recommended dilutions (if any) may be listed below.

IHC: 1:100-1:500

WB: 0.5µg/mL

Formulation

Physical State: Lyophilized

Concentration: 0.5 mg/mL by UV absorbance at 280 nm

Buffer: 0.9mg NaCl, 0.2mg Na₂HPO₄, 0.05mg Na₃

Preservative: 0.05mg Thimerosal

Stabilizer: 5mg BSA

Reconstitution Volume: 100 µL

Reconstitution Buffer: Restore with deionized water (or equivalent)

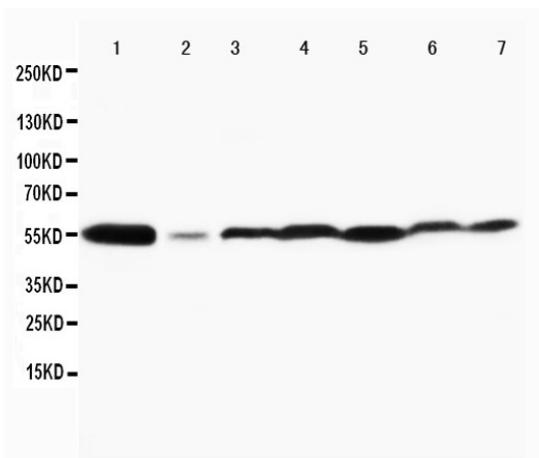
Shipping & Handling

Shipping Condition: Ambient

Storage Condition: Store vial at 4° C prior to opening. Aliquot contents and freeze at -20° C or below for extended storage. Avoid cycles of freezing and thawing. Centrifuge product if not completely clear after standing at room temperature. This product is stable for several weeks at 4° C as an undiluted liquid. Dilute only prior to immediate use.

Expiration: Expiration date is one (1) year from date of receipt.

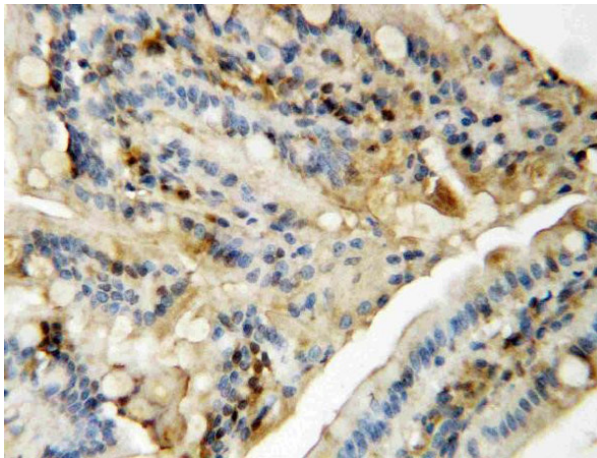
Images



Western Blot

Western blotting of Anti-MAPK 8/9 antibody.

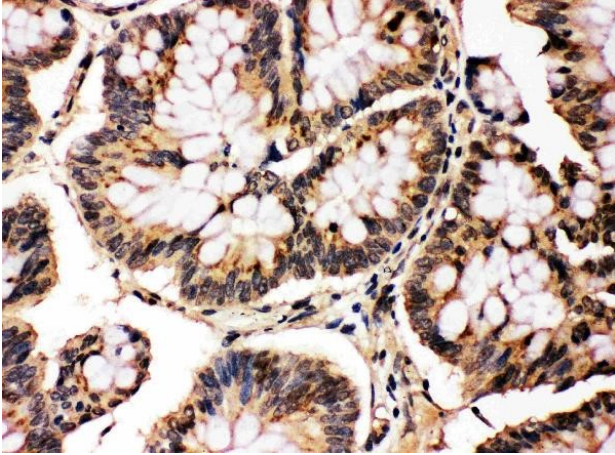
Lane 1: Rat Brain Tissue Lysate. Lane 2: Rat Thymus Tissue Lysate. Lane 3: MCF-7 Cell Lysate. Lane 4: HeLa Cell Lysate. Lane 5: JURKAT Cell Lysate. Lane 6: MM231 Cell Lysate. Lane 7: CEM Cell Lysate.



Immunohistochemistry

Immunohistochemistry of Anti-MAPK8/9 antibody.

Tissue: Rat Intestine Tissue. IHC(P).

**Immunohistochemistry**

Immunohistochemistry of Anti-MAPK8/9 antibody.
Tissue: Human Intestinal Cancer Tissue. IHC(P).

Disclaimer

This product is for research use only and is not intended for therapeutic or diagnostic applications. Please contact a technical service representative for more information. All products of animal origin manufactured by Rockland Immunochemicals are derived from starting materials of North American origin. Collection was performed in United States Department of Agriculture (USDA) inspected facilities and all materials have been inspected and certified to be free of disease and suitable for exportation. All properties listed are typical characteristics and are not specifications. All suggestions and data are offered in good faith but without guarantee as conditions and methods of use of our products are beyond our control. All claims must be made within 30 days following the date of delivery. The prospective user must determine the suitability of our materials before adopting them on a commercial scale. Suggested uses of our products are not recommendations to use our products in violation of any patent or as a license under any patent of Rockland Immunochemicals, Inc. If you require a commercial license to use this material and do not have one, then return this material, unopened to: Rockland Inc., P.O. BOX 5199, Limerick, Pennsylvania, USA.