

Datasheet for 600-401-P16**Anti-mCherry Antibody Pre-Adsorbed****Overview**

Description:	Anti-mCherry (RABBIT) Antibody (Min X Hu Ms & Rt Serum Proteins) - 600-401-P16
Item No.:	600-401-P16
Size:	100 µg
Applications:	ELISA, WB, IF, IHC, IP, Multiplex
Reactivity:	RFP, mCherry, rRFP
Host Species:	Rabbit

Product Details

Background:	mCherry Antibody is ideal for Western Blotting. Fluorescent proteins such as Discosoma Red Fluorescent Protein (and its variants), and GFP are widely used in research practice. Both commonly serve as a markers for gene expression and protein localization. DsRed was isolated from sea anemone Discosoma sp. mushroom and GFP is originated from Aequorea victoria jellyfish. As DsRed and GFP share only 19% identity, therefore, in general, anti-GFP antibodies do not recognize DsRed protein and vice versa. Structurally, Discosoma red fluorescent protein is similar to Aequorea green fluorescent protein in terms of its overall fold (a β -can) and chromophore-formation chemistry. However, Discosoma red fluorescent protein undergoes an additional steps in the chromophore maturation and obligates tetrameric structure. All mCherry antibodies have been pre-absorbed to eliminate any potential cross-reactivity to human, mouse and rat serum proteins. The antibodies are also confirmed for non-reactivity to GFP protein.
Synonyms:	rabbit anti-mCherry antibody, RFP, mCherry monomeric red fluorescent protein, Red Fluorescent Protein (RFP), rDsRed, Discosoma sp. Red Fluorescent Protein, mRFP1, mBanana, mHoneydew, mPlum, mOrange, mStrawberry, mTangerine
Host Species:	Rabbit
Clonality:	Polyclonal
Format:	IgG

Target Details

Gene Name:	DsRed
-------------------	-------

Reactivity:	RFP, mCherry, rRFP
Immunogen:	The immunogen is a mCherry mutant variant fusion protein of RFP corresponding to the full length amino acid sequence (234aa) derived from the mushroom polyp coral <i>Discosoma</i> .
Purity/Specificity:	mCherry was prepared from monospecific antiserum by immunoaffinity chromatography using Red Fluorescent Protein (<i>Discosoma</i>) coupled to agarose beads followed by solid phase adsorption(s) to remove any unwanted reactivities. Expect reactivity against mCherry, RFP and its variants: tdTomato, mBanana, mOrange, mPlum, mOrange and mStrawberry. Assay by immunoelectrophoresis resulted in a single precipitin arc against anti-Rabbit Serum and purified and partially purified mCherry. No reaction was observed against Human, Mouse or Rat serum proteins. ELISA was used to confirm specificity at less than 0.1% of target signal.
Relevant Links:	<ul style="list-style-type: none">600-401-P16 SDS

Application Details

Tested Applications:	ELISA, WB
Suggested Applications:	IF, IHC, IP, Multiplex (Based on references)
Application Note:	Polyclonal anti-mCherry is designed to detect mCherry, RFP, and its variants. Anti-mCherry (<i>Discosoma</i> sp.) has been tested by ELISA and Western blot and is intended for use in immunological assays including ELISA, western blotting, immunofluorescence, and fluorescence activated cell sorting (FACS). Researchers should determine optimal titers for applications that are not stated. In addition, we performed conjugation of RFP antibodies to either fluorescent dyes, biotin or horseradish peroxidase to further facilitate RFP protein detection and quantification.
Assay Dilutions:	All assays should be optimized by the user. Recommended dilutions (if any) may be listed below.
ELISA:	1:150,000 - 1:250,000
IF:	1:200 - 1:2,000
IHC:	1:200 - 1:2,000
WB:	1:2,000 - 1:10,000

Formulation

Physical State:	Liquid (sterile filtered)
Concentration:	1.17 mg/mL by UV absorbance at 280 nm
Buffer:	0.02 M Potassium Phosphate, 0.15 M Sodium Chloride, pH 7.2
Preservative:	0.01% (w/v) Sodium Azide

Shipping & Handling

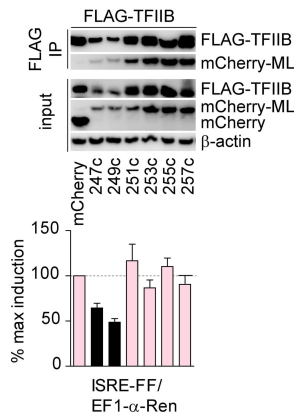
Shipping Condition: Dry Ice

Storage Condition: Store mCherry Antibody at -20° C prior to opening. Aliquot contents and freeze at -20° C or below for extended storage. Avoid cycles of freezing and thawing. Centrifuge product if not completely clear after standing at room temperature. This product is stable for several weeks at 4° C as an undiluted liquid. Dilute only prior to immediate use.

Expiration: Expiration date is one (1) year from date of receipt.

Images

C

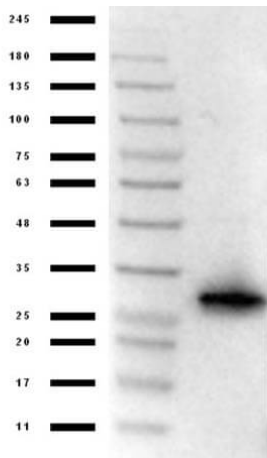


Western Blot

Mapping of a minimal ML sequence required for TFIIB inhibition. A) Schematic representation of ML fragments. B) Top panel: IP of FLAG-tagged TFIIB and GFP-fused ML fragments. Bottom panel: reporter assay in HEK293 cells, where Firefly luciferase under ISRE promoter was co-transfected with EF1-α-Renilla and GFP-ML fragments. C) Top-panel: IP of FLAG-tagged TFIIB and mCherry-fused ML fragments. Bottom panel: reporter assay in HEK293 cells, where Firefly luciferase under ISRE promoter was co-transfected with EF1-α-Renilla and mCherry-ML fragments. Western blots are representative of two experiments with similar results. Bar graphs show mean and SD from three technical replicates and are representative of two experiments with similar results. Figure provided by CiteAb. Source: PLoS Pathog, PMID: 29709033.

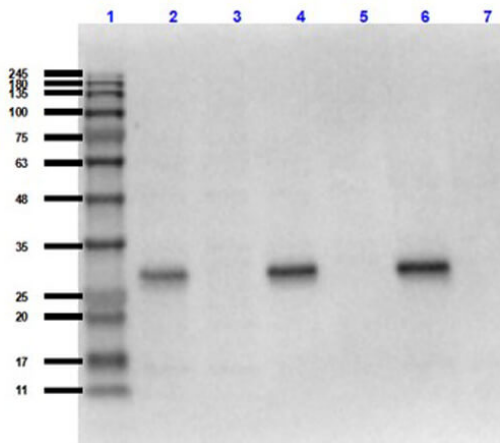
Western Blot

Western Blot of Rabbit anti-mCherry antibody. Lane 1: Rockland mCherry fusion protein (reduced). Lane 2: Control dsRed reduced. Lane 3: Control mCherry reduced. Lane 4: Control BFP reduced. Lane 5: Control eGFP reduced. Lane 6: Rockland mCherry fusion protein (non-reduced). Lane 7: Control dsRed non-reduced. Lane 8: Control mCherry non-reduced. Lane 9: Control BFP non-reduced. Lane 10: Control eGFP non-reduced. Total load ~200 nanograms per lane. Load: 200ng per lane. Primary Antibody: Anti-mCherry at 1:5000 for overnight at 4°C. Secondary antibody: HRP rabbit secondary antibody at 1:10,000 and TMBM-100. Block: 5% BLOTTO overnight at 4°C. Predicted/Observed size: 25.9 kDa, for mCherry and RFP, no reaction to BFP or GFP.



Western Blot

Western Blot of Rabbit Anti-mCherry Antibody. Lane 1: Opal Prestained Marker (p/n MB-210-0500). Lane 2: 50ng of RFP. Primary Antibody: rabbit anti-mCherry at 1 μ g/mL overnight at 4°C. Secondary Antibody: goat anti-Rabbit peroxidase (p/n 611-103-122) at 1:70000 for 30mins at RT. Block: BlockOut Universal Buffer (p/n MB-073). Expect band ~30 kDa.



Western Blot

Western Blot of Rabbit Anti-mCherry Antibody MX Hu Ms Rt. Lane 1: Opal Prestained Molecular Weight Marker (p/n MB-210-0500). Lane 2: RFP (p/n 000-001-379)/HeLa WCL (p/n W09-000-364) [0.02 μ g/10 μ g]. Lane 3: HeLa WCL (p/n W09-000-364) [10 μ g]. Lane 4: RFP (p/n 000-001-379)/NIH/3T3 WCL (p/n W10-000-358) [0.02 μ g/10 μ g]. Lane 5: NIH/3T3 WCL (p/n W10-000-358) [10 μ g]. Lane 6: RFP (p/n 000-001-379)/PC-12 WCL (p/n W12-001-GL9) [0.02 μ g/10 μ g]. Lane 7: PC-12 WCL (p/n W12-001-GL9) [10 μ g]. Primary Antibody: Anti-mCherry at 1:1000 overnight at 2-8°C. Secondary Antibody: Goat Anti-Rabbit IgG HRP (p/n 611-103-122) at 1:70,000 for 30mins at RT. Block: BlockOut Buffer (p/n MB-073). Predicted MW: ~27-30kDa.

References

- Levesque MV et al. Inflamed endothelial cells express S1PR1 inhibitor CD69 to induce vascular leak. *J Biol Chem.* (2025)
- Wang Y et al. TRIM29 promotes bladder cancer invasion by regulating the intermediate filament network and focal adhesion. *Oncogene.* (2025)
- Thornhill EM et al. Respiratory Syncytial Virus Non-Structural Protein Expression Are Limited In Neutrophils. *bioRxiv [preprint]* (2024)
- Ramirez Carbo CA et al. A lytic transglycosylase connects bacterial focal adhesion complexes to the peptidoglycan cell wall. *Elife.* (2024)
- Stinson HE et al. Median raphe glutamatergic neuron-mediated enhancement of GABAergic transmission and suppression of long-term potentiation in the hippocampus. *Heliyon.* (2024)
- Mazucanti CH et al. AAV5-mediated manipulation of insulin expression in choroid plexus has long-term metabolic and behavioral consequences. *Cell Rep.* (2023)

- Lelièvre E et al. Deficiency in hereditary hemorrhagic telangiectasia-associated Endoglin elicits hypoxia-driven heart failure in zebrafish. *Dis Model Mech.* (2023)
- Biswas S et al. Targeting intracellular oncoproteins with dimeric IgA promotes expulsion from the cytoplasm and immune-mediated control of epithelial cancers. *Immunity.* (2023)
- Saravanan S et al. In vivo imaging reveals independent intraflagellar transport of the nexin-dynein regulatory complex subunits DRC2 and DRC4. *Mol Biol Cell.* (2023)
- Park JS et al. Interaction between VPS13A and the XK scramblase is important for VPS13A function in humans. *J Cell Sci.* (2022)
- Fabian, P et al. Lifelong single-cell profiling of cranial neural crest diversification in zebrafish. *Nature Communications* (2022)
- Xie AX et al. Pharmacogenetic inhibition of lumbosacral sensory neurons alleviates visceral hypersensitivity in a mouse model of chronic pelvic pain. *PLoS One.* (2021)
- Rahman F et al. DYNC1LI2 regulates localization of the chaperone-mediated autophagy receptor LAMP2A and improves cellular homeostasis in cystinosis. *Autophagy.* (2021)
- Xia ZJ et al. A Dominant Heterozygous Mutation in COG4 Causes Saul–Wilson Syndrome, a Primordial Dwarfism, and Disrupts Zebrafish Development via Wnt Signaling. *Front Cell Dev Biol.* (2021)
- Lee GS. Et al. 14-3-3 proteins promote synaptic localization of N-methyl d-aspartate receptors (NMDARs) in mouse hippocampal and cortical neurons. *PLoS One.* (2021)
- Fretaud M et al. New look at RSV infection: tissue clearing and 3D imaging of the entire mouse lung at cellular resolution. *Viruses.* (2021)
- Theis, JL et al. Patient-specific genomics and cross-species functional analysis implicate LRP2 in hypoplastic left heart syndrome. *ELife* (2020)
- Bryche B et al. Respiratory syncytial virus tropism for olfactory sensory neurons in mice. *J Neurochem.* (2020)
- Fortuna MG et al. Histological assessment of optogenetic tools to study fronto-visual and fronto-parietal cortical networks in the rhesus macaque. *Sci Rep.* (2020)
- Fretaud M et al. A new reporter zebrafish line unveils heterogeneity among lymphatic endothelial cells during development. *Dev Dyn.* (2020)
- Georgescu T. et al. Neurochemical Characterization of Brainstem Pro-Opiomelanocortin Cells. *Endocrinology* (2020)
- Daniels BP et al. The nucleotide sensor ZBP1 and kinase RIPK3 induce the enzyme IRG1 to promote an antiviral metabolic state in neurons. *Immunity.* (2019)
- Godwin WC et al. Imaging of morphological and biochemical hallmarks of apoptosis with optimized optogenetic tools. *J Biol Chem.* (2019)
- Leipheimer J et al. Translational regulation promotes oxidative stress resistance in the human fungal pathogen *Cryptococcus neoformans*. *mBio.* (2019)
- Haas et al. Viral targeting of TFIIB impairs de novo polymerase II recruitment and affects antiviral immunity. *PLOS Pathogens* (2018)

- Connolly et al. Genetically engineered rat gliomas: PDGF-driven tumor initiation and progression in tv-a transgenic rats recreate key features of human brain cancer. *PLOS One* (2017)
- Daniels et al. RIPK3 Restricts Viral Pathogenesis via Cell Death-Independent Neuroinflammation. *Cell* (2017)
- Zhang et al. Inferior Olivary TMEM16B Mediates Cerebellar Motor Learning. *Neuron* (2017)
- Mukherjee A et al. Expression of active fluorophore proteins in the milk of transgenic pigs bypassing the secretory pathway. *Sci Rep.* (2016)
- Kao et al. Pbx4 is Required for the Temporal Onset of Zebrafish Myocardial Differentiation. *The International Journal of Developmental Biology* (2016)
- Buccelli et al. SQSTM1 splice site mutation in distal myopathy with rimmed vacuoles. *Neurology* (2015)
- Valley, M. T. et al. Adult neurogenesis produces neurons with unique GABAergic synapses in the olfactory bulb. *The Journal of Neuroscience* (2013)

Disclaimer

This product is for research use only and is not intended for therapeutic or diagnostic applications. Please contact a technical service representative for more information. All products of animal origin manufactured by Rockland Immunochemicals are derived from starting materials of North American origin. Collection was performed in United States Department of Agriculture (USDA) inspected facilities and all materials have been inspected and certified to be free of disease and suitable for exportation. All properties listed are typical characteristics and are not specifications. All suggestions and data are offered in good faith but without guarantee as conditions and methods of use of our products are beyond our control. All claims must be made within 30 days following the date of delivery. The prospective user must determine the suitability of our materials before adopting them on a commercial scale. Suggested uses of our products are not recommendations to use our products in violation of any patent or as a license under any patent of Rockland Immunochemicals, Inc. If you require a commercial license to use this material and do not have one, then return this material, unopened to: Rockland Inc., P.O. BOX 5199, Limerick, Pennsylvania, USA.