

Datasheet for 600-401-MPOS

Ephrin B1, B2, B3 Antibody**Overview**

| | |
|----------------------|---|
| Description: | Anti-Ephrin B1, B2, B3 (RABBIT) Antibody - 600-401-MPOS |
| Item No.: | 600-401-MPOS |
| Size: | 25 µL |
| Applications: | ELISA, IF, WB |
| Reactivity: | Human, Mouse, Xenopus laevis |
| Host Species: | Rabbit |

Product Details

| | |
|----------------------|--|
| Background: | This antibody is designed, produced, and validated as part of a collaboration between Rockland and the National Cancer Institute (NCI). Ephrin B1, B2, B3 are cell surface transmembrane ligands for Eph receptors, a family of receptor tyrosine kinases which are crucial for migration, repulsion and adhesion during neuronal, vascular and epithelial development. Binding to Eph receptors residing on adjacent cells leads to contact-dependent bidirectional signaling into neighboring. Ephrin B1 shows high affinity for the receptor tyrosine kinase EPHB1/ELK and can bind EPHB2 and EPHB3. Ephrin B3 may play a pivotal role in forebrain function. They binds to, and induces collapse of, commissural axons/growth cones in vitro. And may play a role in constraining the orientation of longitudinally projecting axons. Anti-Ephrin B1, B2, B3 Antibody is useful for researchers interested in Developmental Biology and Tyrosine Kinases/Adaptors. |
| Synonyms: | Rabbit Anti-Ephrin B1, B2, B3 Antibody, Ephrin-B1, Ephrin-B2, Ephrin-B3, ELK Ligand, EPLG2, LERK2, EFL3, Craniofrontonasal Syndrome (Craniofrontonasal Dysplasia), EPH-Related Receptor Transmembrane Ligand ELK-L3, Eph-Related Receptor Tyrosine Kinase Ligand 2, Eph-Related Receptor Tyrosine Kinase Ligand 8, EPH-Related Receptor Tyrosine Kinase Ligand 2, LERK-2, LERK-8, Elk-L, EFL-3, ELK-L, CFND, EFL6, EFB1, CFNS |
| Host Species: | Rabbit |
| Clonality: | Polyclonal |
| Format: | IgG |

Target Details

| | |
|-------------------|---------------------|
| Gene Name: | EFNB1, Efnb2, EFNB3 |
|-------------------|---------------------|

| | |
|----------------------------|---|
| Reactivity: | Human, Mouse, Xenopus laevis |
| Immunogen Type: | Conjugated Peptide |
| Immunogen: | Anti-Ephrin B1, B2, B3 antibody was prepared from whole rabbit serum produced by repeated immunizations with a synthetic peptide corresponding to C-terminal portion of human Ephrin B1, B2, B3 conjugated to Keyhole Limpet Hemocyanin (KLH). |
| Purity/Specificity: | This affinity purified antibody is directed against human Ephrin B1, B2, B3. This product was affinity purified from monospecific antiserum by immunoaffinity purification. A BLAST analysis was used to suggest cross-reactivity with the antigen based on 100% homology with Ephrin-B1 to human, mouse, rat, and Gallus gallus; 100% homology with Ephrin-B2 to mouse; 100% homology with Ephrin-B3 to human and mouse. |
| Relevant Links: | <ul style="list-style-type: none">• UniProtKB - P52800• UniProtKB - P98172• NCBI - NP_004420.1• GeneID - 1947• UniProtKB - Q15768 |

Application Details

| | |
|-----------------------------|---|
| Tested Applications: | ELISA, IF, WB |
| Application Note: | Anti-Ephrin B1, B2, B3 Antibody has been tested in ELISA, Western Blot, and Immunofluorescence. Expect a band at ~35-38 kDa in western blot using appropriate lysates or tissues. Positive control used Xenopus laevis and mouse kidney in WB and Xenopus laevis in IF. |
| Assay Dilutions: | All assays should be optimized by the user. Recommended dilutions (if any) may be listed below. |
| ELISA: | 1:10,000 - 50,000 |
| IF: | 1:5000 |
| WB: | 1:1000 |

Formulation

| | |
|------------------------|--|
| Physical State: | Liquid (sterile filtered) |
| Concentration: | 1.05 mg/mL by UV absorbance at 280 nm |
| Buffer: | 0.02 M Potassium Phosphate, 0.15 M Sodium Chloride, pH 7.2 |
| Preservative: | 0.01% (w/v) Sodium Azide |
| Stabilizer: | None |

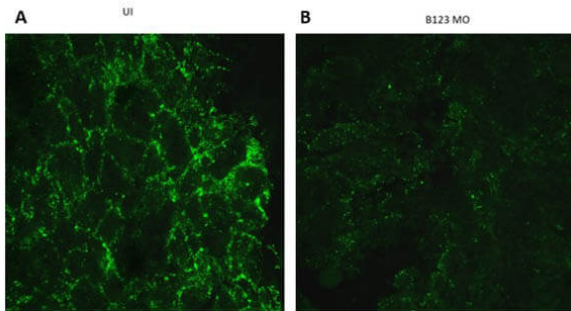
Shipping & Handling

Shipping Condition: Dry Ice

Storage Condition: Store vial at -20° C or below prior to opening. This vial contains a relatively low volume of reagent (25 µL). To minimize loss of volume dilute 1:10 by adding 225 µL of the buffer stated above directly to the vial. Recap, mix thoroughly and briefly centrifuge to collect the volume at the bottom of the vial. Use this intermediate dilution when calculating final dilutions as recommended below. Store the vial at -20°C or below after dilution. Avoid cycles of freezing and thawing.

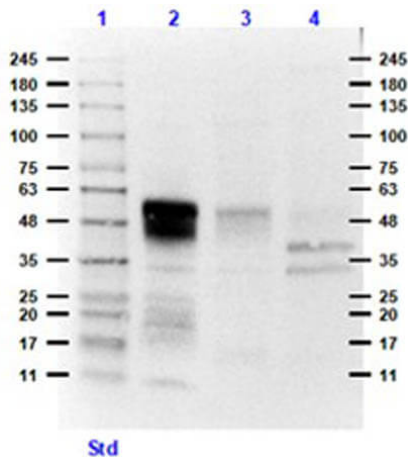
Expiration: Expiration date is one (1) year from date of receipt.

Images



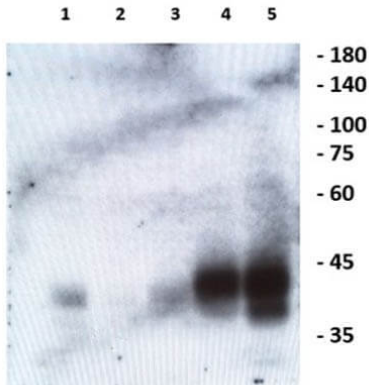
Immunofluorescence Microscopy

Immunofluorescence of Rabbit Anti-Ephrin B1-B3 Antibody. (A). Neural Plate of *Xenopus laevis* stage 17. (B). Knockdown neural plate of *Xenopus laevis* stage 17. Primary Antibody: Anti-Ephrin B1-3 at 1:5000 overnight at 2-8°C. Secondary Antibody: Anti-Rabbit IgG Fluorescent Secondary. Fixative: 4% Paraformaldehyde in PBS. Permeabilization: 0.05% Triton-X100 in PBS. Nuclear Counterstain: None. Magnification: 63X objective, Zeiss LSM710. Results: Ephrin B1 B2 B3 triple knockdown with a mixture of all three morpholinos abolished most of the signal which can be seen at expected plasma membrane and vesicle subcellular locations.



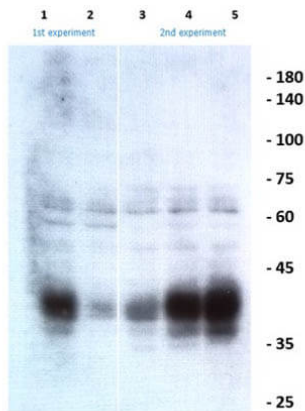
Western Blot

Western Blot of Rabbit Anti-Ephrin B1-B3 Antibody. Lane 1: Opal PreStain Molecular Weight Marker (p/n MB-210-0500). Lane 2: EPHRIN B1 overexpressing HEK293T Lysate (10µg) [+]. Lane 3: HEK293T Lysate (10µg) [-]. Lane 4: Mouse Kidney Lysate (p/n W10-000-T017) (35µg) [+]. Primary Antibody: Anti-Ephrin B1-B3 at 1:1000 overnight at 2-8°C. Secondary Antibody: Goat anti-Rabbit IgG MX10 HRP (p/n 611-103-122) at 1:70,000 for 30 min at RT. Block: BlockOut Buffer (p/n MB-073). Predicted MW: ~38kDa endogenous, ~37-45kDa due to glycosylation. Observed: ~46-52kDa overexpressed, ~34, ~40kDa endogenous.



Western Blot

Western Blot of Rabbit Anti-Ephrin B1-B3 Antibody. Lane 1: Uninjected *Xenopus laevis* heterogenous embryo control (20 μ l). Lane 2: Morpholino Knockdown of Ephrin B1/2 heterogenous embryo Lot#1 (20 μ l). Lane 3: Morpholino Knockdown of Ephrin B1/2 heterogenous embryo Lot#2 (20 μ l). Lane 4: Ephrin B1-HA overexpression heterogenous embryo lysate (20 μ l). Lane 5: Ephrin B2-HA overexpression heterogenous embryo lysate (20 μ l). Primary Antibody: Anti-Ephrin B1-B3 at 1:2000 overnight at 2-8 $^{\circ}$ C. Secondary Antibody: Goat Anti-Rabbit IgG HRP (p/n 611-103-122) at 1:5000 for 60 mins at RT. Block: 5% skim milk/TBST/0.1% Tween for 30 mins at RT. Predicted MW: ~38kDa. Observed MW: ~37-45kDa (due to glycosylation). Exposure: 10 sec. Results: Ephrin B1,2, double knockdown with a mixture of both morpholinos oligomers abolished most of the WB signal at expected size which was double checked by over-expression.



Western Blot

Western Blot of Rabbit Anti-Ephrin B1-B3 Antibody. Lane 1: 1st experiment: Uninjected heterogenous embryo [+]. Lane 2: 1st experiment: Ephrin B1,2 MO (2 morpholino oligomers). Lane 3: 2nd experiment: Ephrin B1,2,3 MO (3 morpholino oligomers). Lane 4: 2nd experiment: Ephrin B3 MO (1 morpholino oligomer). Lane 5: 2nd experiment: Uninjected heterogenous embryo [+]. Primary Antibody: Anti-Ephrin B1-B3 at 1:2000 overnight at 2-8 $^{\circ}$ C. Secondary Antibody: Goat anti-Rabbit IgG HRP (p/n 611-103-122) 1:5000 for 60 min at RT. Block: 5% skim milk/TBST/0.1% Tween. Exposure: 10 sec. Predicted MW: ~38kDa. Observed: ~37-45kDa. Results: Ephrin B1,2,3 triple knockdown with a mixture of all three morpholinos abolished significant amount of the WB signal at expected size. The comparison of lane 3 and 4 suggests not much endogenous Ephrin B3 expression exist in this stage embryos.

References

- Yoon J et al. Wnt4 and ephrinB2 instruct apical constriction via Dishevelled and non-canonical signaling. *Nat Commun.* (2023)
- Yoon J et al. Rab11fp5 regulates telencephalon development via ephrinB1 recycling. *Development.* (2021)

Disclaimer

This product is for research use only and is not intended for therapeutic or diagnostic applications. Please contact a technical service representative for more information. All products of animal origin manufactured by Rockland Immunochemicals are derived from starting materials of North American origin. Collection was performed in United States Department of Agriculture (USDA) inspected facilities and all materials have been inspected and certified to be free of disease and suitable for exportation. All properties listed are typical characteristics and are not specifications. All suggestions and data are offered in good faith but without guarantee as conditions and methods of use of our products are beyond our control. All claims must be made within 30 days following the date of delivery. The prospective user must determine the suitability of our materials before adopting them on a commercial scale. Suggested uses of our products are not recommendations to use our products in violation of any patent or as a license under any patent of Rockland Immunochemicals, Inc. If you require a commercial license to use this material and do not have one, then return this material, unopened to: Rockland Inc., P.O. BOX 5199, Limerick, Pennsylvania, USA.