

Datasheet for 600-401-MM8**CH25H Antibody****Overview**

Description:	Anti-CH25H (RABBIT) Antibody - 600-401-MM8
Item No.:	600-401-MM8
Size:	100 µg
Applications:	ELISA, IHC, WB
Reactivity:	Human
Host Species:	Rabbit

Product Details

Background:	CH25H (Cholesterol 25-Hydroxylase catalyzes the formation of 25-hydroxycholesterol from cholesterol, leading to repress cholesterol biosynthetic enzymes. CH25H plays a key role in cell positioning and movement in lymphoid tissues: 25-hydroxycholesterol is an intermediate in biosynthesis of 7-alpha,25-dihydroxycholesterol (7-alpha,25-OHC), an oxysterol that acts as a ligand for the G protein-coupled receptor GPR183/EBI2, a chemotactic receptor for several lymphoid cells. It may play an important role in regulating lipid metabolism by synthesizing a corepressor that blocks sterol regulatory element binding protein (SREBP) processing. In testis, production of 25-hydroxycholesterol by macrophages may play a role in Leydig cell differentiation. Anti-CH25H Antibody is useful for researchers interested in Alzheimer's Disease, Neuroscience, and metabolism.
Synonyms:	Rabbit Anti-Cholesterol 25-Hydroxylase, Rabbit Anti-CH25H, Cholesterol 25-Monooxygenase, EC 1.14.99.38, H25OH, C25H
Host Species:	Rabbit
Clonality:	Polyclonal
Format:	IgG

Target Details

Gene Name:	CH25H
Reactivity:	Human
Immunogen Type:	Conjugated Peptide

Immunogen:	Anti-CH25H antibody was prepared from whole rabbit serum produced by repeated immunizations with a synthetic peptide corresponding to a C-Terminal region of human CH25H conjugated to Keyhole Limpet Hemocyanin (KLH).
Purity/Specificity:	This affinity purified antibody is directed against human CH25H. This product was affinity purified from monospecific antiserum by immunoaffinity purification. A BLAST analysis was used to suggest cross-reactivity with the antigen based on 100% homology with the immunizing sequence and 92% homology to pig, 91% homology to rat, and 75% homology to mouse.
Relevant Links:	<ul style="list-style-type: none">• UniProtKB - O95992• NCBI - NP_003947.1• GenelD - 9023

Application Details

Tested Applications:	ELISA, IHC, WB
Application Note:	Anti-CH25H Antibody has been tested in ELISA, WB, and IHC. Expect a band at ~31.7kDa in western blot using appropriate tissues or lysates. Positive control used: Human Kidney Tissues in Immunohistochemistry.
Assay Dilutions:	All assays should be optimized by the user. Recommended dilutions (if any) may be listed below.
ELISA:	1:10,000 - 1:50,000
IHC:	1:100
WB:	1:1,000

Formulation

Physical State:	Liquid (sterile filtered)
Concentration:	0.92 mg/ml by UV absorbance at 280 nm
Buffer:	0.02 M Potassium Phosphate, 0.15 M Sodium Chloride, pH 7.2
Preservative:	0.01% (w/v) Sodium Azide
Stabilizer:	None

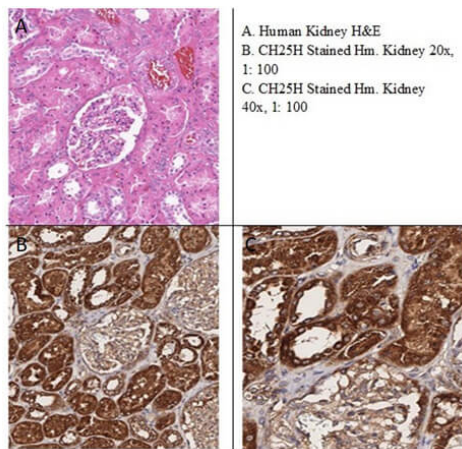
Shipping & Handling

Shipping Condition:	Dry Ice
----------------------------	---------

Storage Condition: Store vial at -20° C prior to opening. Aliquot contents and freeze at -20° C or below for extended storage. Avoid cycles of freezing and thawing. Centrifuge product if not completely clear after standing at room temperature. This product is stable for several weeks at 4° C as an undiluted liquid. Dilute only prior to immediate use.

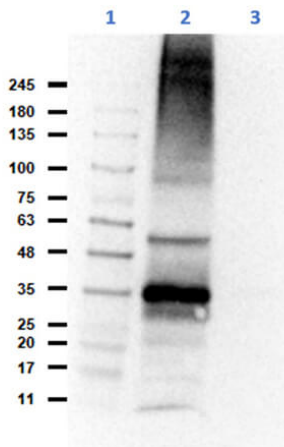
Expiration: Expiration date is one (1) year from date of receipt.

Images



Immunohistochemistry

Immunohistochemistry of Rabbit Anti-CH25H Antibody.
 Tissue: Human Kidney. Fixative: None. Antigen Retrieval: HIER using Citrate Buffer for 20 minutes. Primary Antibody: Anti-CH25H at 1:100 for 30 min at RT. Secondary Antibody: Anti-Rabbit Poly-HRP IgG Ready-to-Use for 8 minutes at RT. Counterstain: Hematoxylin. Substrate: DAB. Staining: (A) Negative control. (B) 20X. (C) 40X. Results: Shows strong cytoplasmic staining of renal tubular epithelium.



Western Blot

Western Blot of Rabbit Anti-CH25H Antibody. Lane 1: Opal Prestained Molecular Weight Marker (p/n MB-210-0500). Lane 2: CH25H overexpressed HEK293T Lysate [10µg]. Lane 3: HeLa whole cell Lysate (p/n W09-000-364) [10µg]. Primary Antibody: Anti-CH25H at 1:1000 overnight at 2-8°C. Secondary Antibody: Goat Anti-Rabbit IgG HRP (p/n 611-103-122) at 1:70,000 for 30min at RT. Block: Universal BlockOut Buffer (p/n MB-073). Predicted MW: ~31.7kDa. Observed MW: ~35kDa. Exposure: 3 seconds.

Disclaimer

This product is for research use only and is not intended for therapeutic or diagnostic applications. Please contact a technical service representative for more information. All products of animal origin manufactured by Rockland Immunochemicals are derived from starting materials of North American origin. Collection was performed in United States Department of Agriculture (USDA) inspected facilities and all materials have been inspected and certified to be free of disease and suitable for exportation. All properties listed are typical characteristics and are not specifications. All suggestions and data are offered in good faith but without guarantee as conditions and methods of use of our products are beyond our control. All claims must be made within 30 days following the date of delivery. The prospective user must determine the suitability of our materials before adopting them on a commercial scale. Suggested uses of our products are not recommendations to use our products in violation of any patent or as a license under any patent of Rockland Immunochemicals, Inc. If you require a commercial license to use this material and do not have one, then return this material, unopened to: Rockland Inc., P.O. BOX 5199, Limerick, Pennsylvania, USA.