

**Datasheet for 600-401-ME9S****p35 Antibody****Overview**

<b>Description:</b>	Anti-p35/Cdk5 (RABBIT) Antibody - 600-401-ME9S
<b>Item No.:</b>	600-401-ME9S
<b>Size:</b>	25 µL
<b>Applications:</b>	ELISA, IHC, WB
<b>Reactivity:</b>	Human, Mouse
<b>Host Species:</b>	Rabbit

**Product Details**

<b>Background:</b>	p35, is a neuron specific activator of CDK5. Also known as Cdk5r1 (Cyclin-dependent kinase 5 activator 1), the complex p35/CDK5 is required for neurite outgrowth and cortical lamination. It is involved in dendritic spine morphogenesis by mediating the EFNA1-EPHA4 signaling. Activator of TPKII. The complex p35/CDK5 participates in the regulation of the circadian clock by modulating the function of CLOCK protein: phosphorylates CLOCK at Thr-451 and Thr-461 and regulates the transcriptional activity of the CLOCK-ARNTL/BMAL1 heterodimer in association with altered stability and subcellular distribution. Diseases associated with CDK5R1 include Alzheimer Disease and Non-Syndromic Intellectual Disability. Anti-p35/Cdk5 Antibody is useful for researchers interested in Alzheimer researcher, protein kinase binding, Neuroscience Research, and Cancer Research.
<b>Synonyms:</b>	Rabbit Anti-Cyclin Dependent Kinase 5 Regulatory Subunit 1 Antibody, Rabbit Anti-Cyclin-dependent kinase 5 activator 1 Antibody, Rabbit Anti-p35 Antibody, TPKII Regulatory Subunit, CDK5 Activator 1, CDK5R, NCK5A, Cyclin-Dependent Kinase 5, Regulatory Subunit 1 (P35), Cyclin-Dependent Kinase 5 Regulatory Subunit 1, Cyclin-Dependent Kinase 5 Activator 1, Tau Protein Kinase II 23kDa Subunit, Regulatory Partner For CDK5 Kinase, Neuronal CDK5 Activator, P35nck5a, CDK5P35, P23, P25, P35
<b>Host Species:</b>	Rabbit
<b>Clonality:</b>	Polyclonal
<b>Format:</b>	IgG

**Target Details**

<b>Gene Name:</b>	Cdk5r1
-------------------	--------

<b>Reactivity:</b>	Human, Mouse
<b>Immunogen Type:</b>	Conjugated Peptide
<b>Immunogen:</b>	Anti-p35/Cdk5 antibody was prepared from whole rabbit serum produced by repeated immunizations with a synthetic peptide corresponding to a near N-terminal portion of mouse p35/Cdk5 conjugated to Keyhole Limpet Hemocyanin (KLH).
<b>Purity/Specificity:</b>	This affinity purified antibody is directed against mouse p35/Cdk5. This product was affinity purified from monospecific antiserum by immunoaffinity purification. A BLAST analysis was used to suggest cross-reactivity with the antigen based on 100% homology with the immunizing sequence to rat, human, bovine, and Spermophilus citellus.
<b>Relevant Links:</b>	<ul style="list-style-type: none"><li>• <a href="#">UniProtKB - P61809</a></li><li>• <a href="#">NCBI - NP_034001.1</a></li><li>• <a href="#">GeneID - 12569</a></li></ul>

## Application Details

<b>Tested Applications:</b>	ELISA, IHC, WB
<b>Application Note:</b>	Anti-p35/Cdk5 Antibody has been tested in ELISA, WB, and IHC. Expect bands ~34 kDa in western blot using appropriate tissues and lysates. Positive control used: mouse brain lysate in WB and IHC. This antibody is suitable in IF.
<b>Assay Dilutions:</b>	All assays should be optimized by the user. Recommended dilutions (if any) may be listed below.
<b>ELISA:</b>	1:10,000 - 1:50,000
<b>IHC:</b>	1:100
<b>WB:</b>	1:1000

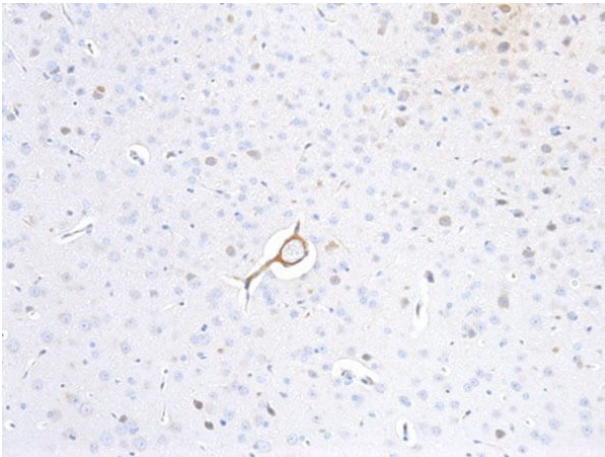
## Formulation

<b>Physical State:</b>	Liquid (sterile filtered)
<b>Concentration:</b>	0.96 mg/ml by UV absorbance at 280 nm
<b>Buffer:</b>	0.02 M Potassium Phosphate, 0.15 M Sodium Chloride, pH 7.2
<b>Preservative:</b>	0.01% (w/v) Sodium Azide
<b>Stabilizer:</b>	None

## Shipping & Handling

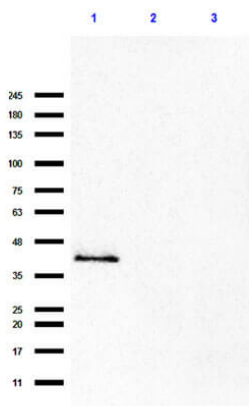
<b>Shipping Condition:</b>	Dry Ice
<b>Storage Condition:</b>	Store vial at -20° C or below prior to opening. This vial contains a relatively low volume of reagent (25 µL). To minimize loss of volume dilute 1:10 by adding 225 µL of the buffer stated above directly to the vial. Recap, mix thoroughly and briefly centrifuge to collect the volume at the bottom of the vial. Use this intermediate dilution when calculating final dilutions as recommended below. Store the vial at -20°C or below after dilution. Avoid cycles of freezing and thawing.
<b>Expiration:</b>	Expiration date is one (1) year from date of receipt.

## Images



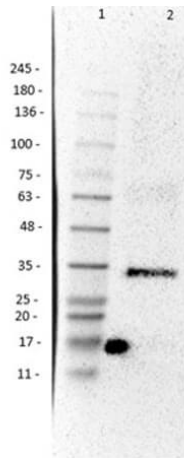
### Immunohistochemistry

Immunohistochemistry of Rabbit Anti-p35 Antibody. Tissue: Mouse Brain. Fixative: none. Antigen Retrieval: HIER. Primary Antibody: Anti-p35/Cdk5 Antibody at 1:100. Secondary Antibody: Ready-to-Use Anti-Rabbit. Counterstain: Hematoxylin. Results: p35 developed a strong nuclear and membranous staining of neurons and neurophil in brain tissue.



### Western Blot

Western Blot of Rabbit Anti-p35/Cdk5 Antibody. Lane 1: Human CDK5 overexpressing HEK293T lysate, C-terminal DDK tag (10µg) [+]. Lane 2: Human CDK5 empty vector HEK293T lysate (10µg) [-]. Lane 3: NIH-3T3 lysate (p/n W10-000-358) (35µg) [-]. Primary Antibody: Anti-p35/Cdk5 at 1:1000 overnight at RT. Secondary Antibody: Goat Anti-Rabbit HRP (p/n 611-103-122) at 1:70,000 for 30 minutes at RT. Block: BlockOut Buffer (p/n MB-073). Predicted MW: ~34-40kDa overexpressing. Observed MW: ~40kDa. Exposure: 30 sec.

**Western Blot**

Western Blot of Rabbit Anti-p35/Cdk5 Antibody. Lane 1: Mouse brain Lysate (p/n W10-000-T004) (35µg) [+]. Primary Antibody: Anti-p35/Cdk5 at 1:1000 overnight at RT. Secondary Antibody: Donkey Anti-Rabbit HRP (p/n 611-703-127) at 1:70,000 for 30 minutes at RT. Block: BlockOut Buffer (p/n MB-073). Predicted MW: ~34kDa. Observed MW: ~34kDa. Exposure: 10 sec.

**Disclaimer**

This product is for research use only and is not intended for therapeutic or diagnostic applications. Please contact a technical service representative for more information. All products of animal origin manufactured by Rockland Immunochemicals are derived from starting materials of North American origin. Collection was performed in United States Department of Agriculture (USDA) inspected facilities and all materials have been inspected and certified to be free of disease and suitable for exportation. All properties listed are typical characteristics and are not specifications. All suggestions and data are offered in good faith but without guarantee as conditions and methods of use of our products are beyond our control. All claims must be made within 30 days following the date of delivery. The prospective user must determine the suitability of our materials before adopting them on a commercial scale. Suggested uses of our products are not recommendations to use our products in violation of any patent or as a license under any patent of Rockland Immunochemicals, Inc. If you require a commercial license to use this material and do not have one, then return this material, unopened to: Rockland Inc., P.O. BOX 5199, Limerick, Pennsylvania, USA.