

Datasheet for 600-401-K12**Gata1 Antibody****Overview**

Description:	Anti-Gata1 (RABBIT) Antibody - 600-401-K12
Item No.:	600-401-K12
Size:	100 µg
Applications:	ELISA, WB
Reactivity:	Mouse
Host Species:	Rabbit

Product Details

Background:	Gata1, also known as erythroid transcription factor, is critical in red blood cell and platelet structure and development. It regulates the switch from fetal hemoglobin to adult hemoglobin. Anti-Gata1 antibody is ideal for researchers interested in cell growth and cancer research.
Synonyms:	rabbit anti-Gata1 antibody, Gata-1, gata 1, Erythroid transcription factor, Eryf1, GATA-binding factor 1, GF-1, NF-E1 DNA-binding protein, Gf-1
Host Species:	Rabbit
Clonality:	Polyclonal
Format:	IgG

Target Details

Gene Name:	Gata1
Reactivity:	Mouse
Immunogen Type:	Conjugated Peptide
Immunogen:	Anti-Gata1 affinity purified antibody was prepared from whole rabbit serum produced by repeated immunizations with a synthetic peptide corresponding to mouse Gata1 peptide.

Purity/Specificity: Anti-Gata1 is directed against mouse Gata1. The product was affinity purified from monospecific antiserum by immunoaffinity purification. A BLAST analysis was used to suggest reactivity with this protein from mouse and rat based on 100% homology for the immunogen sequence and 93% to human. Cross reactivity with Gata1 homologues from other sources has not been determined.

Relevant Links:

- [UniProtKB - P17679](#)
- [GeneID - 14460](#)
- [NCBI - NP_032115.1](#)

Application Details

Tested Applications: ELISA, WB

Application Note: Anti-Gata1 Antibody has been tested by ELISA and Western Blot. Expect a band approximately 43 kDa in size corresponding to mouse Gata1 by western blotting in the appropriate cell lysate or extract. Researchers should determine optimal titers for applications that are not stated below.

Assay Dilutions: All assays should be optimized by the user. Recommended dilutions (if any) may be listed below.

ELISA: 1:15,000 - 1:75,000

WB: 1:500 - 1:2,000

Formulation

Physical State: Liquid (sterile filtered)

Concentration: 0.73 mg/mL by UV absorbance at 280 nm

Buffer: 0.02 M Potassium Phosphate, 0.15 M Sodium Chloride, pH 7.2

Preservative: 0.01% (w/v) Sodium Azide

Stabilizer: None

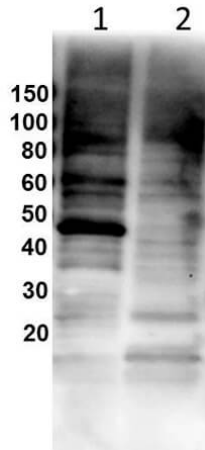
Shipping & Handling

Shipping Condition: Dry Ice

Storage Condition: Store vial at -20° C prior to opening. Aliquot contents and freeze at -20° C or below for extended storage. Avoid cycles of freezing and thawing. Centrifuge product if not completely clear after standing at room temperature. This product is stable for several weeks at 4° C as an undiluted liquid. Dilute only prior to immediate use.

Expiration: Expiration date is one (1) year from date of receipt.

Images



Western Blot

Western Blot of Rabbit Anti-Gata1 antibody. Lane 1: NIH/3T3. Lane 2: mouse brain. Load: 25 µg per lane. Primary antibody: Gata1 antibody at 1:1000 for overnight at 4°C. Secondary antibody: HRP rabbit secondary antibody at 1:40,000 for 60 min at RT. Block: MB-070 Fluorescent Blocking Buffer used overnight at 4°C. Predicted/Observed size: 42.7 kDa for Gata1.

Disclaimer

This product is for research use only and is not intended for therapeutic or diagnostic applications. Please contact a technical service representative for more information. All products of animal origin manufactured by Rockland Immunochemicals are derived from starting materials of North American origin. Collection was performed in United States Department of Agriculture (USDA) inspected facilities and all materials have been inspected and certified to be free of disease and suitable for exportation. All properties listed are typical characteristics and are not specifications. All suggestions and data are offered in good faith but without guarantee as conditions and methods of use of our products are beyond our control. All claims must be made within 30 days following the date of delivery. The prospective user must determine the suitability of our materials before adopting them on a commercial scale. Suggested uses of our products are not recommendations to use our products in violation of any patent or as a license under any patent of Rockland Immunochemicals, Inc. If you require a commercial license to use this material and do not have one, then return this material, unopened to: Rockland Inc., P.O. BOX 5199, Limerick, Pennsylvania, USA.