

Datasheet for 600-401-K06**RON Antibody****Overview**

Description:	Anti-RON (RABBIT) Antibody - 600-401-K06
Item No.:	600-401-K06
Size:	100 µg
Applications:	ELISA, WB
Reactivity:	Human
Host Species:	Rabbit

Product Details

Background:	RON antibody detects human RON. RON is a member of the protein kinase superfamily. Protein kinases mediate most of the signal transduction in eukaryotic cells, regulating cellular metabolism, transcription, cell cycle progression, cytoskeletal rearrangement and cell movement, apoptosis, and differentiation. RON is a heterodimer composed of an α chain and a β chain. The α chain is completely extracellular, whereas the β chain traverses the cell membrane and contains the intracellular tyrosine kinase and regulatory elements. Anti-RON Antibody is ideal for investigators involved in Cell Signaling, Cancer, Neuroscience and Signal Transduction research.
Synonyms:	rabbit anti-RON antibody, Macrophage-stimulating protein receptor, MSP receptor, Protein-tyrosine kinase 8, p185-Ron, PTK8, RON, c-met-related tyrosine kinase, CD136
Host Species:	Rabbit
Clonality:	Polyclonal
Format:	IgG

Target Details

Gene Name:	MST1R
Reactivity:	Human
Immunogen Type:	Conjugated Peptide
Immunogen:	Anti-RON Antibody was produced in rabbits by repeated immunizations with a synthetic peptide corresponding to residues surrounding Y1353 of human RON protein.

Purity/Specificity: Anti-RON was prepared from monospecific antiserum by immunoaffinity chromatography using phospho peptide coupled to agarose beads followed by solid phase adsorptions against non-phospho peptide and non-specific peptide to remove any unwanted reactivities. Assay by immunoelectrophoresis resulted in a single precipitin arc against anti-Rabbit Serum. This antibody is specific for human RON. Cross-reactivity against RON from other species may occur but has not yet been tested.

Relevant Links:

- [UniProtKB - Q04912](#)
- [NCBI - NP_002438.2](#)
- [GeneID - 4486](#)

Application Details

Tested Applications: ELISA, WB

Application Note: Anti-RON Antibody has been tested for use in ELISA and by western blot. Specific conditions for reactivity should be optimized by the end user. Expect a predominant band at ~ 152.3 kDa corresponding to full length protein by western blotting in the appropriate cell lysate or extract.

Assay Dilutions: All assays should be optimized by the user. Recommended dilutions (if any) may be listed below.

ELISA: 1:2,000 - 1:10,000

WB: 1:500-1:2000

Formulation

Physical State: Liquid (sterile filtered)

Concentration: 1.0 mg/mL by UV absorbance at 280 nm

Buffer: 0.02 M Potassium Phosphate, 0.15 M Sodium Chloride, pH 7.2

Preservative: 0.01% (w/v) Sodium Azide

Stabilizer: None

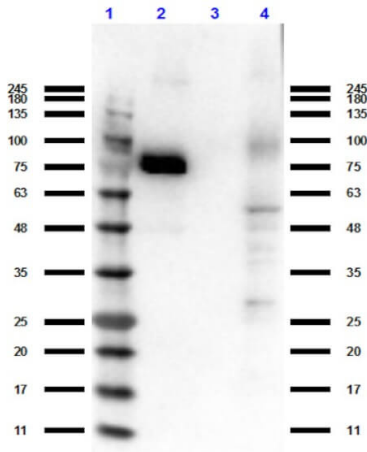
Shipping & Handling

Shipping Condition: Dry Ice

Storage Condition: Store vial at -20° C prior to opening. Aliquot contents and freeze at -20° C or below for extended storage. Avoid cycles of freezing and thawing. Centrifuge product if not completely clear after standing at room temperature. This product is stable for several weeks at 4° C as an undiluted liquid. Dilute only prior to immediate use.

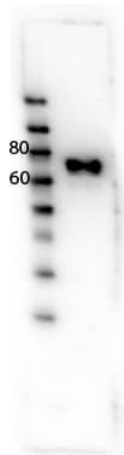
Expiration: Expiration date is one (1) year from date of receipt.

Images



Western Blot

Western Blot of Anti-RON (RABBIT) Antibody. Lane 1: Protein Standard Opal Pre-stained (p/n MB-210-0500). Lane 2: Ron-GST. Lane 3: GST. Lane 4: A431 whole cell lysate (p/n W09-000-361). Primary Antibody: Anti-RON (RABBIT) Antibody (600-401-K06) at 1 ug/mL for overnight at 4°C. Secondary Antibody :Goat Anti-Rabbit Secondary HRP Antibody (p/n 611-103-122) at 1:70,000 for 30 min at RT. Block: MB-070 at RT for 30 min. Predicted/Observed size: ~152.3 kDa full length and 70 kDa cytoplasmic.



Western Blot

Western Blot of Rabbit anti-RON antibody. Lane 1: Phospho RON rProtein (cytoplasmic domain). Load: 0.05 µg per lane. Primary antibody: RON antibody at 1µg for overnight at 4°C. Secondary antibody: HRP Goat anti-rabbit IgG secondary antibody at 1:40,000 for 45 min at RT. Block: MB-070 Fluorescent blocking buffer overnight at 4°C. Predicted/Observed size: 152 kDa (full length) /~70 kDa (cytoplasmic domain) RON. Other band(s): none.

Disclaimer

This product is for research use only and is not intended for therapeutic or diagnostic applications. Please contact a technical service representative for more information. All products of animal origin manufactured by Rockland Immunochemicals are derived from starting materials of North American origin. Collection was performed in United States Department of Agriculture (USDA) inspected facilities and all materials have been inspected and certified to be free of disease and suitable for exportation. All properties listed are typical characteristics and are not specifications. All suggestions and data are offered in good faith but without guarantee as conditions and methods of use of our products are beyond our control. All claims must be made within 30 days following the date of delivery. The prospective user must determine the suitability of our materials before adopting them on a commercial scale. Suggested uses of our products are not recommendations to use our products in violation of any patent or as a license under any patent of Rockland Immunochemicals, Inc. If you require a commercial license to use this material and do not have one, then return this material, unopened to: Rockland Inc., P.O. BOX 5199, Limerick, Pennsylvania, USA.