

Datasheet for 600-401-J92**PI4K Beta Antibody****Overview**

Description:	Anti-PI4K beta (RABBIT) Antibody - 600-401-J92
Item No.:	600-401-J92
Size:	100 µg
Applications:	ELISA, IHC, WB
Reactivity:	Human
Host Species:	Rabbit

Product Details

Background:	Phosphatidylinositol 4-kinase beta contributes to the overall PI4-kinase activity of the cell. It contributes to the production of PIP and may regulate Golgi membrane trafficking and reorganization. A member of PI3/PI4-kinase family, PI4KII alpha is widely expressed with the highest amount of expression in the heart, skeletal muscle, pancreas, testis and ovary. Anti-PI4K beta antibody is ideal for investigators interested in Kinase and Phosphatase Antibodies.
Synonyms:	rabbit anti-PI4K beta antibody, Phosphatidylinositol 4-kinase beta, PtdIns 4-kinase beta, PI4Kβ, PIK4CB, PI4KB, NPIK, PI4K92, PI4K-beta
Host Species:	Rabbit
Clonality:	Polyclonal
Format:	IgG

Target Details

Gene Name:	PI4KB
Reactivity:	Human
Immunogen Type:	Conjugated Peptide
Immunogen:	Anti-PI4K beta affinity purified antibody was prepared from whole rabbit serum produced by repeated immunizations with a synthetic peptide corresponding to an internal region of human PI4K beta protein.

Purity/Specificity: Anti-PI4K beta was affinity purified from monospecific antiserum by immunoaffinity chromatography. A BLAST analysis was used to suggest cross-reactivity with bat, rat, primate, mouse, and human based on 100% sequence homology. Cross-reactivity with PI4K beta from other sources has not been determined.

Relevant Links:

- [UniProtKB - Q9UBF8](#)

Application Details

Tested Applications: ELISA, IHC, WB

Application Note: Anti-PI4K beta antibody has been tested by ELISA, IHC, and Western Blot. Specific conditions for reactivity should be optimized by the end user. Expect a band approximately ~91.4kDa corresponding to the appropriate cell lysate or extract.

Assay Dilutions: All assays should be optimized by the user. Recommended dilutions (if any) may be listed below.

ELISA: 1:10,000

IHC: 5 µg/mL

WB: 1ug/ml

Formulation

Physical State: Liquid (sterile filtered)

Concentration: 1.0 mg/mL by UV absorbance at 280 nm

Buffer: 0.02 M Potassium Phosphate, 0.15 M Sodium Chloride, pH 7.2

Stabilizer: 40% (v/v) Glycerol

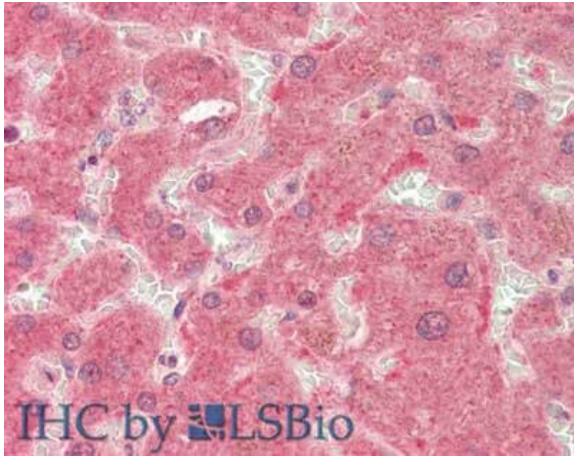
Shipping & Handling

Shipping Condition: Dry Ice

Storage Condition: Store vial at -20° C prior to opening. Aliquot contents and freeze at -20° C or below for extended storage. Avoid cycles of freezing and thawing. Centrifuge product if not completely clear after standing at room temperature. This product is stable for several weeks at 4° C as an undiluted liquid. Dilute only prior to immediate use.

Expiration: Expiration date is one (1) year from date of receipt.

Images

**Immunohistochemistry**

Immunohistochemistry of Rabbit anti-PIK4CB / PI4KB antibody. Tissue: Liver. Fixation: formalin fixed paraffin embedded. Antigen retrieval: not required. Primary antibody: PIK4CB / PI4KB antibody at 5 µg/mL for 1 h at RT. Secondary antibody: Peroxidase rabbit secondary antibody at 1:10,000 for 45 min at RT. Staining: PIK4CB / PI4KB as precipitated red signal with hematoxylin purple nuclear counterstain.

Disclaimer

This product is for research use only and is not intended for therapeutic or diagnostic applications. Please contact a technical service representative for more information. All products of animal origin manufactured by Rockland Immunochemicals are derived from starting materials of North American origin. Collection was performed in United States Department of Agriculture (USDA) inspected facilities and all materials have been inspected and certified to be free of disease and suitable for exportation. All properties listed are typical characteristics and are not specifications. All suggestions and data are offered in good faith but without guarantee as conditions and methods of use of our products are beyond our control. All claims must be made within 30 days following the date of delivery. The prospective user must determine the suitability of our materials before adopting them on a commercial scale. Suggested uses of our products are not recommendations to use our products in violation of any patent or as a license under any patent of Rockland Immunochemicals, Inc. If you require a commercial license to use this material and do not have one, then return this material, unopened to: Rockland Inc., P.O. BOX 5199, Limerick, Pennsylvania, USA.