

**Datasheet for 600-401-J48****STIM1 Antibody****Overview**

<b>Description:</b>	Anti-STIM1 (RABBIT) Antibody - 600-401-J48
<b>Item No.:</b>	600-401-J48
<b>Size:</b>	100 µg
<b>Applications:</b>	IHC, WB
<b>Reactivity:</b>	Human, Mouse
<b>Host Species:</b>	Rabbit

**Product Details**

<b>Background:</b>	Stim I antibody helps regulate calcium influx after the depletion of intracellular calcium stores. It functions as a calcium sensor in the endoplasmic reticulum via its EF-hand domain. After depletion of Ca <sup>2+</sup> , it is translocated from the endoplasmic reticulum to the plasma membrane so the calcium release-activated channel subunit is activated. Anti-Stim I antibody is ideal for investigators interested in Metabolism and Signal Transduction research.
<b>Synonyms:</b>	rabbit anti-STIM1 antibody, Stromal interaction molecule 1, STIM-1, STIM 1, GOK
<b>Host Species:</b>	Rabbit
<b>Clonality:</b>	Polyclonal
<b>Format:</b>	IgG

**Target Details**

<b>Gene Name:</b>	STIM1
<b>Reactivity:</b>	Human, Mouse
<b>Immunogen Type:</b>	Conjugated Peptide
<b>Immunogen:</b>	Stim 1 affinity purified antibody was prepared from whole rabbit serum produced by repeated immunizations with a synthetic peptide near the C-terminus of human Stim 1.

**Purity/Specificity:** Anti-Stim I was affinity purified from monospecific antiserum by immunoaffinity chromatography. A BLAST analysis was used to suggest cross-reactivity with rat, human, bovine, and mouse based on 100% sequence homology. Cross-reactivity with Stim I from other sources has not been determined.

**Relevant Links:**

- [GeneID - 6786](#)
- [NCBI - NP\\_003147.2](#)
- [UniProtKB - Q13586](#)

## Application Details

**Tested Applications:** IHC, WB

**Application Note:** Anti-Stim I antibody is tested for ELISA, immunohistochemistry, and Western Blot. Specific conditions for reactivity should be optimized by the end user. Expect a band approximately ~77kDa corresponding to the appropriate cell lysate or extract.

**Assay Dilutions:** All assays should be optimized by the user. Recommended dilutions (if any) may be listed below.

**ELISA:** 1: 10,000

**IHC:** 5ug/ml

**WB:** 1ug/ml

## Formulation

**Physical State:** Liquid (sterile filtered)

**Concentration:** 1.03 mg/mL by UV absorbance at 280 nm

**Buffer:** 0.02 M Potassium Phosphate, 0.15 M Sodium Chloride, pH 7.2

**Preservative:** None

**Stabilizer:** 50% (v/v) Glycerol with 1 mg/ml Bovine Serum Albumin (BSA)

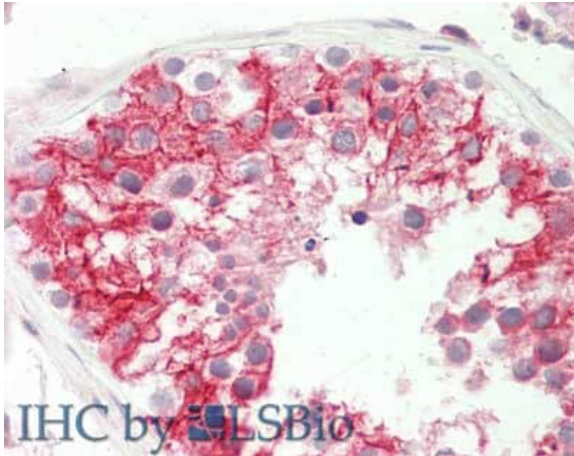
## Shipping & Handling

**Shipping Condition:** Dry Ice

**Storage Condition:** Store vial at -20° C prior to opening. Aliquot contents and freeze at -20° C or below for extended storage. Avoid cycles of freezing and thawing. Centrifuge product if not completely clear after standing at room temperature. This product is stable for several weeks at 4° C as an undiluted liquid. Dilute only prior to immediate use.

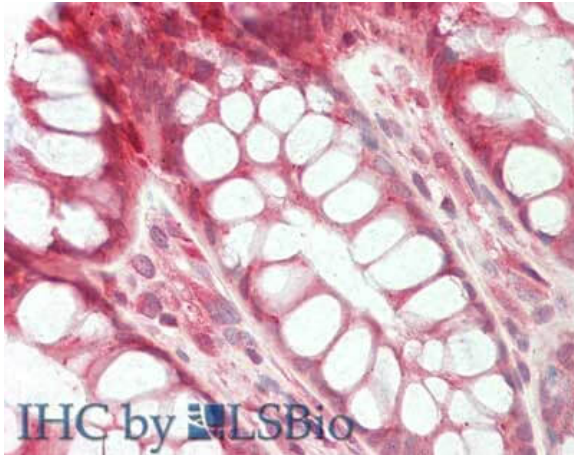
**Expiration:** Expiration date is one (1) year from date of receipt.

## Images



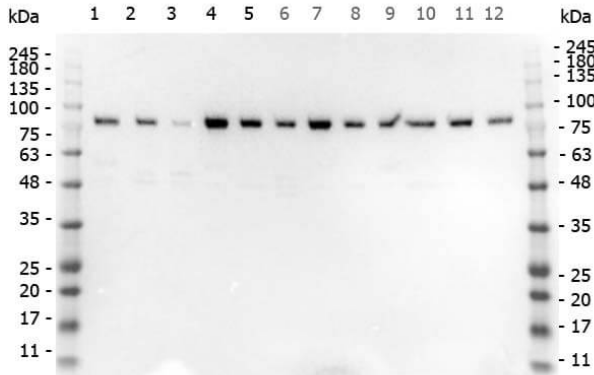
### Immunohistochemistry

Immunohistochemistry of Rabbit anti-GOK / STIM1 antibody.  
Tissue: Testis. Fixation: formalin fixed paraffin embedded.  
Antigen retrieval: not required. Primary antibody: GOK / STIM1 antibody at 5 µg/mL for 1 h at RT. Secondary antibody: Peroxidase rabbit secondary antibody at 1:10,000 for 45 min at RT. Staining: GOK / STIM1 as precipitated red signal with hematoxylin purple nuclear counterstain.



### Immunohistochemistry

Immunohistochemistry of Rabbit anti-GOK / STIM1 antibody.  
Tissue: Colon. Fixation: formalin fixed paraffin embedded. Antigen retrieval: not required. Primary antibody: GOK / STIM1 antibody at 5 µg/mL for 1 h at RT. Secondary antibody: Peroxidase rabbit secondary antibody at 1:10,000 for 45 min at RT. Staining: GOK / STIM1 as precipitated red signal with hematoxylin purple nuclear counterstain.



### Western Blot

Western Blot of Rabbit anti-STIM1 antibody. Marker: Opal Pre-stained ladder (p/n MB-210-0500). Lane 1: HEK293 lysate (p/n W09-000-365). Lane 2: HeLa Lysate (p/n W09-000-363). Lane 3: MCF-7 Lysate (p/n W09-000-360). Lane 4: Jurkat Lysate (p/n W09-000-370). Lane 5: A431 Lysate (p/n W09-000-361). Lane 6: A549 Lysate (p/n W09-001-372). Lane 7: LNCap Lysate (p/n W09-001-GJ9). Lane 8: MOLT-4 Lysate (p/n W09-001-GK2). Lane 9: Ramos Lysate (p/n W09-000-GK4). Lane 10: Raji Lysate (p/n W09-001-368). Lane 11: A-172 Lysate (p/n W09-001-GL5). Lane 12: NIH/3T3 Lysate (p/n W10-000-358). Marker: Opal Pre-stained ladder (p/n MB-210-0500). Load: 35 µg per lane. Primary antibody: STIM1 antibody at 1µg/mL overnight at 4C. Secondary antibody: Peroxidase rabbit secondary antibody (p/n 611-103-122) at 1:30,000 for 60 min at RT. Blocking Buffer: 1% Casein-TTBS (p/n MB-082) for 30 min at RT. Predicted/Observed size: 77kDa for STIM1.

### Disclaimer

This product is for research use only and is not intended for therapeutic or diagnostic applications. Please contact a technical service representative for more information. All products of animal origin manufactured by Rockland Immunochemicals are derived from starting materials of North American origin. Collection was performed in United States Department of Agriculture (USDA) inspected facilities and all materials have been inspected and certified to be free of disease and suitable for exportation. All properties listed are typical characteristics and are not specifications. All suggestions and data are offered in good faith but without guarantee as conditions and methods of use of our products are beyond our control. All claims must be made within 30 days following the date of delivery. The prospective user must determine the suitability of our materials before adopting them on a commercial scale. Suggested uses of our products are not recommendations to use our products in violation of any patent or as a license under any patent of Rockland Immunochemicals, Inc. If you require a commercial license to use this material and do not have one, then return this material, unopened to: Rockland Inc., P.O. BOX 5199, Limerick, Pennsylvania, USA.