

Datasheet for 600-401-J25**Kmo Antibody****Overview**

Description:	Anti-KMO (RABBIT) Antibody - 600-401-J25
Item No.:	600-401-J25
Size:	100 µg
Applications:	WB
Reactivity:	Human, Mouse
Host Species:	Rabbit

Product Details

Background:	Kynurenine 3-monooxygenase (KMO) catalyzes the hydroxylation of L-kynurenine (L-Kyn) to form 3-hydroxy-L-kynurenine (L-3OHKyn). The enzyme is required for synthesis of quinolinic acid. Quinolinic acid is a neurotoxic NMDA receptor antagonist and potential endogenous inhibitor of NMDA receptor signaling in axonal targeting, synaptogenesis and apoptosis during brain development. Anti-KMO antibodies are ideal for researchers interested in Apoptosis, Neurodegeneration, and Neuroscience research.
Synonyms:	rabbit anti-KMO antibody, kynurenine 3-monooxygenase, kynurenine 3-hydroxylase
Host Species:	Rabbit
Clonality:	Polyclonal
Format:	IgG

Target Details

Gene Name:	KMO
Reactivity:	Human, Mouse
Immunogen Type:	Conjugated Peptide
Immunogen:	KMO affinity purified antibody was prepared from whole rabbit serum produced by repeated immunizations with a synthetic peptide corresponding to an internal region surrounding 300-400aa of the mouse KMO chain.

Purity/Specificity: Anti-KMO was affinity purified from monospecific antiserum by immunoaffinity chromatography. This antibody is specific towards Kynurenine 3-monooxygenase (KMO). A BLAST analysis was used to suggest cross-reactivity with Mouse based on 100% sequence homology. Cross-reactivity with KMO from other sources has not been determined.

Relevant Links:

- [UniProtKB - O15229](#)
- [NCBI - NP_003670.2](#)
- [GeneID - 8564](#)

Application Details

Tested Applications: WB

Application Note: Anti-KMO antibody is tested for ELISA and Western Blot. Specific conditions for reactivity should be optimized by the end user. Expect a band approximately ~58 kDa corresponding to the appropriate cell lysate or extract.

Assay Dilutions: All assays should be optimized by the user. Recommended dilutions (if any) may be listed below.

ELISA: 1:20,000 - 1:60,000

IF: 1:100-1:500

IHC: 1:100-1:500

WB: 1 µg/ml

Formulation

Physical State: Liquid (sterile filtered)

Concentration: 1.02 mg/ml by UV absorbance at 280 nm

Buffer: 0.02 M Potassium Phosphate, 0.15 M Sodium Chloride, pH 7.2

Preservative: None

Stabilizer: 50% (v/v) Glycerol

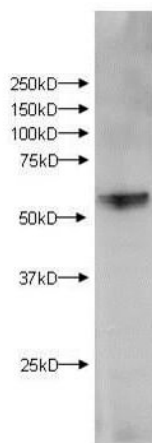
Shipping & Handling

Shipping Condition: Dry Ice

Storage Condition: Store vial at -20° C prior to opening. Aliquot contents and freeze at -20° C or below for extended storage. Avoid cycles of freezing and thawing. Centrifuge product if not completely clear after standing at room temperature. This product is stable for several weeks at 4° C as an undiluted liquid. Dilute only prior to immediate use.

Expiration: Expiration date is six (6) months from date of receipt.

Images



Western Blot

Western Blot of Rabbit anti-KMO antibody. Lane 1: Brain Extract. Load: 10 µg per lane. Primary antibody: KMO antibody at 1µg/mL for overnight at 4°C. Secondary antibody: IRDye800™ rabbit secondary antibody at 1:10,000 for 45 min at RT. Block: 5% BLOTTO overnight at 4°C. Predicted/Observed size: 58 kDa for KMO. Other band(s): None.

Disclaimer

This product is for research use only and is not intended for therapeutic or diagnostic applications. Please contact a technical service representative for more information. All products of animal origin manufactured by Rockland Immunochemicals are derived from starting materials of North American origin. Collection was performed in United States Department of Agriculture (USDA) inspected facilities and all materials have been inspected and certified to be free of disease and suitable for exportation. All properties listed are typical characteristics and are not specifications. All suggestions and data are offered in good faith but without guarantee as conditions and methods of use of our products are beyond our control. All claims must be made within 30 days following the date of delivery. The prospective user must determine the suitability of our materials before adopting them on a commercial scale. Suggested uses of our products are not recommendations to use our products in violation of any patent or as a license under any patent of Rockland Immunochemicals, Inc. If you require a commercial license to use this material and do not have one, then return this material, unopened to: Rockland Inc., P.O. BOX 5199, Limerick, Pennsylvania, USA.