

Datasheet for 600-401-J18**HDAC2 (near C-terminus) Antibody****Overview**

Description:	Anti-HDAC2 (RABBIT) Antibody - 600-401-J18
Item No.:	600-401-J18
Size:	100 µg
Applications:	WB
Reactivity:	Human, Mouse, Rat, Primate
Host Species:	Rabbit

Product Details

Background:	Histone deacetylase 2 (HDAC2), or transcriptional regulator homolog RPD3 L1, is highly homologous to the yeast transcription factor RPD3 (reduced potassium dependency 3) gene. As in yeast, human HDAC2 is likely to be involved in regulating chromatin structure during transcription. It has been implicated to associate with YY1, a mammalian zinc-finger transcription factor, which negatively regulates transcription by tethering RPD3 to DNA as a cofactor. This process is highly conserved from yeast to human. Anti-HDAC2 antibodies are ideal for researchers interested in Breast Cancer, Cancer, Chromatin Research, Epigenetics, Histone Deacetylases, and Stem Cell Markers research.
Synonyms:	rabbit anti-HDAC-2 antibody, HDAC2, HDAC 2, HD 2 antibody, histone deacetylase 2 antibody, Histone deacetylase-2, HD2 antibody
Host Species:	Rabbit
Clonality:	Polyclonal
Format:	IgG

Target Details

Gene Name:	HDAC2
Reactivity:	Human, Mouse, Rat, Primate
Immunogen Type:	Conjugated Peptide

Immunogen:	HDAC2 affinity purified antibody was prepared from whole rabbit serum produced by repeated immunizations with a synthetic peptide corresponding to the near C-terminal region of human HDAC2.
Purity/Specificity:	Anti-HDAC2 was affinity purified from monospecific antiserum by immunoaffinity chromatography. This antibody is specific towards HDAC2. A BLAST analysis was used to suggest cross-reactivity with Human, Mouse, Rat, and Primate based on 100% sequence homology. Cross-reactivity with HDAC2 from other sources has not been determined.
Relevant Links:	<ul style="list-style-type: none">• UniProtKB - Q92769• NCBI - NP_001518• GenelD - 3066

Application Details

Tested Applications:	WB
Application Note:	Anti-HDAC2 antibody is tested for ELISA and Western Blot. Specific conditions for reactivity should be optimized by the end user. Expect a band approximately ~59 kDa corresponding to the appropriate cell lysate or extract.
Assay Dilutions:	All assays should be optimized by the user. Recommended dilutions (if any) may be listed below.
ELISA:	1:20,000 - 1:60,000
IF:	1:100-1:500
IHC:	1:100-1:500
WB:	1 µg/ml

Formulation

Physical State:	Liquid (sterile filtered)
Concentration:	1.0mg/mL by UV absorbance at 280 nm
Buffer:	0.02 M Potassium Phosphate, 0.15 M Sodium Chloride, pH 7.2
Preservative:	None
Stabilizer:	30% Glycerol

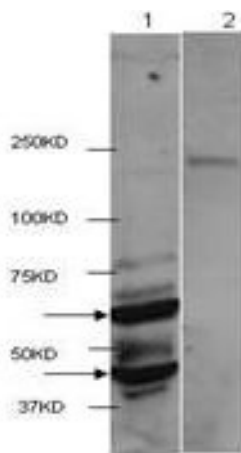
Shipping & Handling

Shipping Condition:	Dry Ice
----------------------------	---------

Storage Condition: Store vial at -20° C prior to opening. Aliquot contents and freeze at -20° C or below for extended storage. Avoid cycles of freezing and thawing. Centrifuge product if not completely clear after standing at room temperature. This product is stable for several weeks at 4° C as an undiluted liquid. Dilute only prior to immediate use.

Expiration: Expiration date is six (6) months from date of receipt.

Images



Western Blot

Western Blot of Rabbit Anti-HDAC2 antibody. Lane 1: mouse brain extract. Lane 2: mouse brain extract blocked with peptide. Load: 4 µg per lane. Primary antibody: HDAC2 antibody at 1µg/mL for overnight at 4°C. Secondary antibody: IRDye800™ rabbit secondary antibody at 1:10,000 for 45 min at RT. Block: 5% BLOTTO overnight at 4°C. Predicted/Observed size: 59 kDa for HDAC2.

Disclaimer

This product is for research use only and is not intended for therapeutic or diagnostic applications. Please contact a technical service representative for more information. All products of animal origin manufactured by Rockland Immunochemicals are derived from starting materials of North American origin. Collection was performed in United States Department of Agriculture (USDA) inspected facilities and all materials have been inspected and certified to be free of disease and suitable for exportation. All properties listed are typical characteristics and are not specifications. All suggestions and data are offered in good faith but without guarantee as conditions and methods of use of our products are beyond our control. All claims must be made within 30 days following the date of delivery. The prospective user must determine the suitability of our materials before adopting them on a commercial scale. Suggested uses of our products are not recommendations to use our products in violation of any patent or as a license under any patent of Rockland Immunochemicals, Inc. If you require a commercial license to use this material and do not have one, then return this material, unopened to: Rockland Inc., P.O. BOX 5199, Limerick, Pennsylvania, USA.