

Datasheet for 600-401-I05**RAB7 Antibody****Overview**

Description:	Anti-RAB7 (RABBIT) Antibody - 600-401-I05
Item No.:	600-401-I05
Size:	100 µg
Applications:	IF, IHC, WB
Reactivity:	Human, Mouse
Host Species:	Rabbit

Product Details

Background:	Anti-Rab7 antibody detects human Rab7. Rab7 is a 207 amino acid transport carrier, belonging to the Rab family of RAS-related GTP-binding proteins with 4 GTP/GDP-binding sites and terminates in sequences such as cys-X-cys, cys-cys or a closely related sequence. Rab7 located in specific intracellular compartments is known to be an important regulator of vesicular transport of proteins from early to late endosomes and lysosome biogenesis. Rab7 accelerates thyroid hormone production controlling aggregation and fusion of late lysosomes. It is ubiquitously expressed in most of the tissues and plays an essential role in maintenance of the perinuclear lysosome compartment. Anti-Rab7 antibody is ideal for investigators involved in cancer, NFkappaB , and signaling research, kinase and phosphatase protein research.
Synonyms:	RAB7, Ras-related protein Rab-7a
Host Species:	Rabbit
Clonality:	Polyclonal
Format:	IgG

Target Details

Gene Name:	RAB7A
Reactivity:	Human, Mouse
Immunogen Type:	Conjugated Peptide
Immunogen:	Rab-7 Antibody was produced from whole rabbit serum prepared by repeated immunizations at the internal amino acids of human Rab-7 protein.

Purity/Specificity: Anti-Rab-7 Antibody was purified by peptide affinity chromatography. A BLAST analysis was used to suggest cross-reactivity with Rab-7 from rat and New World monkey based on 100% homology with the immunizing sequence. Cross-reactivity with Anti-Rab-7 from other sources has not been determined.

Relevant Links:

- [UniProtKB - P51149](#)
- [NCBI - NP_004628.4](#)
- [GeneID - 7879](#)

Application Details

Tested Applications: IF, IHC, WB

Application Note: Anti-Rab7 antibody has been tested in IF, IHC (p), and WB. Expect a band approximately 23kDa on specific lysates. Specific conditions for reactivity should be optimized by the end user.

Assay Dilutions: All assays should be optimized by the user. Recommended dilutions (if any) may be listed below.

IHC: 10 µg/mL

WB: 0.5-1 µg/mL

Formulation

Physical State: Liquid

Concentration: 1.0 mg/mL by UV absorbance at 280 nm

Buffer: 0.02 M Potassium Phosphate, 0.15 M Sodium Chloride, pH 7.2

Preservative: 0.02% (w/v) Sodium Azide

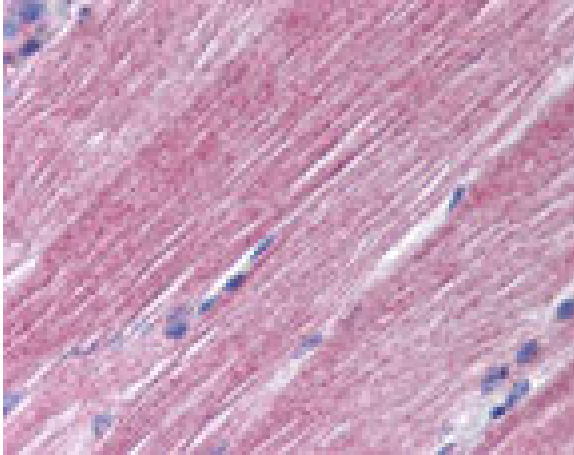
Shipping & Handling

Shipping Condition: Dry Ice

Storage Condition: Store vial at -20° C prior to opening. Aliquot contents and freeze at -20° C or below for extended storage. Avoid cycles of freezing and thawing. Centrifuge product if not completely clear after standing at room temperature. This product is stable for several weeks at 4° C as an undiluted liquid. Dilute only prior to immediate use.

Expiration: Expiration date is one (1) year from date of receipt.

Images

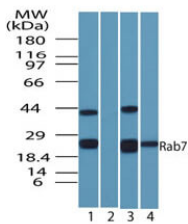


Immunohistochemistry

Immunohistochemistry of Rabbit Anti-Rab-7 antibody.
Tissue: human skeletal muscle. Fixation: formalin fixed paraffin embedded. Antigen retrieval: not required.
Primary antibody: Rab-7 antibody at 10 µg/mL for 1 h at RT.
Secondary antibody: Peroxidase rabbit secondary antibody at 1:10,000 for 45 min at RT.

Localization: Rab-7 is a late endosome protein found in the cytoplasmic and phagocytic vesicles and the melanosome.

Staining: Rab-7 as a precipitated red signal with hematoxylin purple nuclear counterstain.



Western Blot

Western Blot of Rabbit Anti-Rab-7 antibody. Lane 1: HeLa lysate without immunizing peptide. Lane 2: HeLa lysate with immunizing peptide. Lane 3: mouse NIH 3T3. Lane 4: RAW cells. Primary antibody: Rab-7 at 0.25 µg/mL for overnight at 4°C. Secondary antibody: IRDye800™ rabbit secondary antibody at 1:10,000 for 45 min at RT. Block: 5% BLOTTO overnight at 4°C. Predicted/Observed size: 80 kDa for Rab-7. Other band(s): none.

Disclaimer

This product is for research use only and is not intended for therapeutic or diagnostic applications. Please contact a technical service representative for more information. All products of animal origin manufactured by Rockland Immunochemicals are derived from starting materials of North American origin. Collection was performed in United States Department of Agriculture (USDA) inspected facilities and all materials have been inspected and certified to be free of disease and suitable for exportation. All properties listed are typical characteristics and are not specifications. All suggestions and data are offered in good faith but without guarantee as conditions and methods of use of our products are beyond our control. All claims must be made within 30 days following the date of delivery. The prospective user must determine the suitability of our materials before adopting them on a commercial scale. Suggested uses of our products are not recommendations to use our products in violation of any patent or as a license under any patent of Rockland Immunochemicals, Inc. If you require a commercial license to use this material and do not have one, then return this material, unopened to: Rockland Inc., P.O. BOX 5199, Limerick, Pennsylvania, USA.