

Datasheet for 600-401-H30**TSLP Antibody****Overview**

Description:	Anti-TSLP (RABBIT) Antibody - 600-401-H30
Item No.:	600-401-H30
Size:	100 µg
Applications:	ELISA, IF, IHC, WB
Reactivity:	Human, Mouse
Host Species:	Rabbit

Product Details

Background: TSLP antibody detects human TSLP. Thymic stromal lymphopoietin (TSLP) has recently been identified as an important factor capable of driving dendritic cell maturation and activation. TSLP is a four-helix-bundle cytokine that is expressed mainly by barrier epithelial cells and is a potent activator of several cell types such as myeloid dendritic cells. TSLP is involved in the positive selection of regulatory T cells, maintenance of peripheral CD4+ T cell homeostasis and the induction of CD4+ T cell-mediated allergic reaction. TSLP is also capable of supporting the growth of fetal liver and adult B cell progenitors and their differentiation to the IgM-positive stage of B cell development. Amino acid sequence analysis has shown poor homology between human and mouse TSLP although they exhibit similar biological functions and are expressed in similar tissues. At least two differentially spliced isoforms of TSLP are known to exist. Anti-TSLP antibodies are ideal for investigators involved in neuroscience research.

Synonyms:	Thymic stromal lymphopoietin
Host Species:	Rabbit
Clonality:	Polyclonal
Format:	IgG

Target Details

Gene Name:	TSLP
Reactivity:	Human, Mouse
Immunogen Type:	Conjugated Peptide

Immunogen:	TSLP Antibody was produced from whole rabbit serum prepared by repeated immunizations with a peptide corresponding to an internal region of human TSLP.
Purity/Specificity:	Anti-TSLP Antibody was affinity purified from monospecific antiserum by immunoaffinity purification. A BLAST analysis was used to suggest cross-reactivity with TSLP with Human and Mouse based on 100% homology with the immunizing sequence. Cross-reactivity with TSLP from other sources has not been determined.
Relevant Links:	<ul style="list-style-type: none">• NCBI - NP_149024• UniProtKB - Q969D9• GeneID - 85480

Application Details

Tested Applications:	ELISA, IF, IHC, WB
Application Note:	Anti-TSLP Antibody is tested for use in E, WB, IF, and IHC. Expect a band approximately ~18.1 kDa on specific lysates. Western Blot, Immunohistochemistry, and Immunofluorescence tested in human and mouse samples; Immunocytochemistry in human samples. Specific conditions for reactivity should be optimized by the end user.
Assay Dilutions:	All assays should be optimized by the user. Recommended dilutions (if any) may be listed below.
IF:	20µg/mL
IHC:	1-2.5µg/mL
WB:	0.25-4µg/mL

Formulation

Physical State:	Liquid (sterile filtered)
Concentration:	1 mg/mL by UV absorbance at 280 nm
Buffer:	0.02 M Potassium Phosphate, 0.15 M Sodium Chloride, pH 7.2
Preservative:	0.02% (w/v) Sodium Azide
Stabilizer:	None

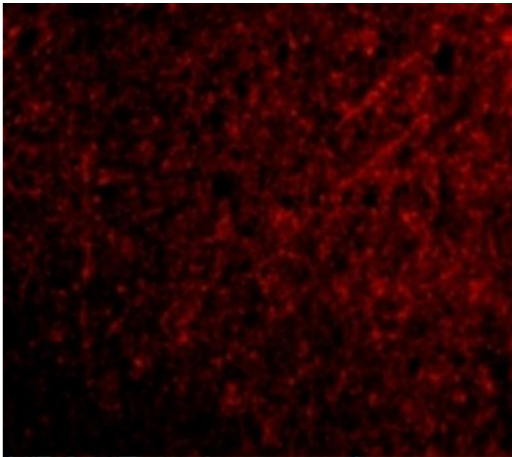
Shipping & Handling

Shipping Condition:	Wet Ice
----------------------------	---------

Storage Condition: Antibody can be stored at 4°C up to one year. Antibodies should not be exposed to prolonged high temperatures.

Expiration: Expiration date is one (1) year from date of receipt.

Images



Immunofluorescence Microscopy

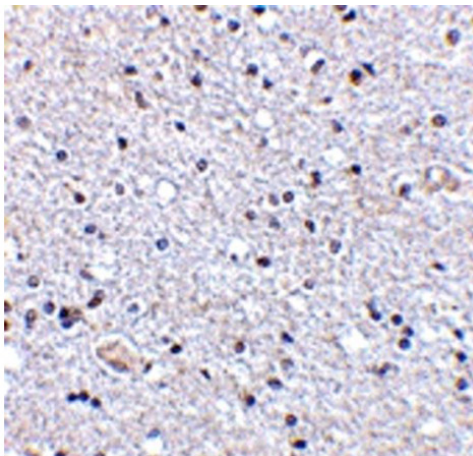
Immunofluorescence of TSLP.

Tissue: Human Brain Tissue.

Fixation: 4% paraformaldehyde-fixed.

Primary Antibody: Anti-TSLP at 20 µg/mL.

Secondary Antibody: goat anti-rabbit IgG secondary antibody at 1:500 dilution (red).



Immunohistochemistry

Immunohistochemistry of TSLP.

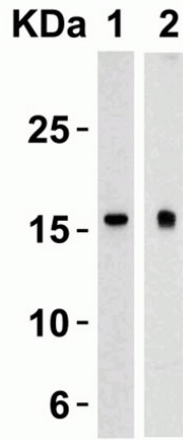
Tissue: Human Brain Tissue.

Fixation: paraffin-embedded, formaldehyde and blocked with 10% serum for 1 h at RT.

Antigen retrieval was by heat mediation with a citrate buffer (pH6).

Primary Antibody: anti-TSLP antibody at 2.5 µg/ml overnight at 4°C.

Secondary: goat anti-rabbit IgG H&L (HRP) at 1:250. Counter stained with Hematoxylin.

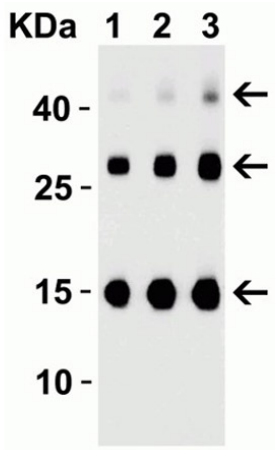

Western Blot

Western Blot of TSLP.

Load: 15 µg of lysates per lane Human Heart (Lane 1) and Human Prostate (Lane 2).

Primary antibody: Anti-TSLP at 4 µg/mL for 1h incubation at RT in 5% NFDm/TBST.

Secondary: Goat anti-rabbit IgG HRP conjugate at 1:10000 dilution.


Western Blot

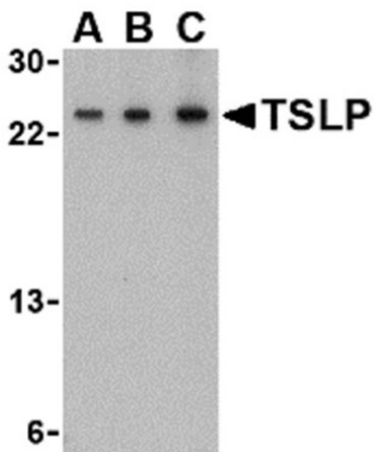
Western Blot of TSLP.

Load: 30ng of TSLP partial human recombinant protein per lane.

Primary antibody: Anti-TSLP at (Lane 1: 0.25 µg/mL, Lane 2: 0.5 µg/mL, Lane 3: 1 µg/mL) for 1h incubation at RT in 5% NFDm/TBST.

Secondary: Goat anti-rabbit IgG HRP conjugate at 1:10000 dilution.

Observed MW: TSLP partial human recombinant protein 15kD, the observed bands at 30kD and 45kD are the dimer and trimer, respectively.

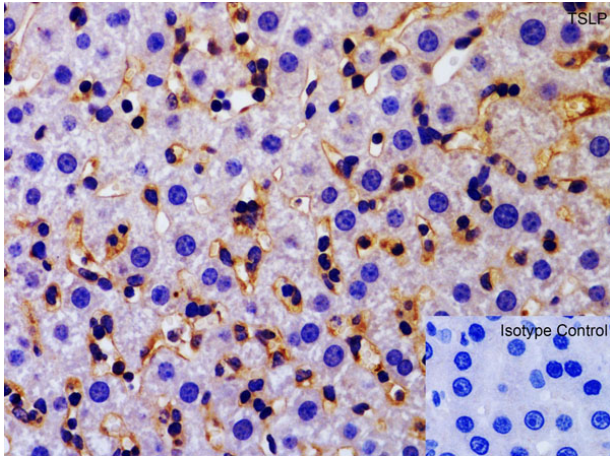

Western Blot

Western Blot of TSLP.

Load: 15 µg of Mouse A-20 Cell Line lysates per lane.

Primary antibody: Anti-TSLP at (A: 0.5 µg/mL, B: 1 µg/mL, C: 2 µg/mL) for 1h incubation at RT in 5% NFDm/TBST.

Secondary: Goat anti-rabbit IgG HRP conjugate at 1:10000 dilution.

**Immunohistochemistry**

Immunohistochemistry of TSLP.

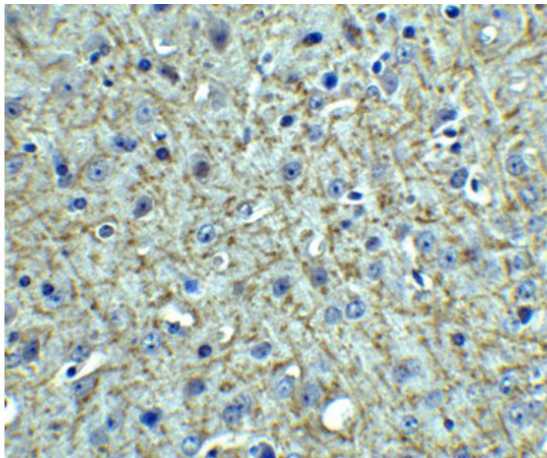
Tissue: Human Brain Tissue.

Fixation: paraffin-embedded, fixed with formaldehyde and blocked with 10% serum for 1 h at RT.

Antigen retrieval: heat mediation with a citrate buffer (pH6).

Primary Antibody: anti-TSLP antibody at 2.5 µg/mL overnight at 4°C

Secondary: goat anti-rabbit IgG H&L (HRP) at 1:250. Counter stained with Hematoxylin.

**Immunohistochemistry**

Immunohistochemistry of TSLP.

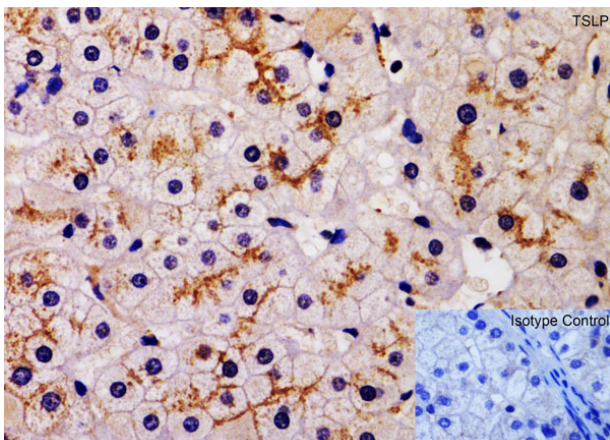
Tissue: Human Liver Tissue.

Fixation: paraffin-embedded, fixed with formaldehyde and blocked with 10% serum for 1 h at RT.

Antigen retrieval: heat mediation with a citrate buffer (pH6).

Primary Antibody: anti-TSLP antibody at 2 µg/mL overnight at 4°C

Secondary: goat anti-rabbit IgG H&L (HRP) at 1:250. Counter stained with Hematoxylin.

**Immunohistochemistry**

Immunohistochemistry of TSLP.

Tissue: Mouse Liver Tissue.

Fixation: paraffin-embedded, fixed with formaldehyde and blocked with 10% serum for 1 h at RT.

Antigen retrieval: heat mediation with a citrate buffer (pH6).

Primary Antibody: anti-TSLP antibody at 2 µg/mL overnight at 4°C

Secondary: goat anti-rabbit IgG H&L (HRP) at 1:250. Counter stained with Hematoxylin.

Disclaimer

This product is for research use only and is not intended for therapeutic or diagnostic applications. Please contact a technical service representative for more information. All products of animal origin manufactured by Rockland Immunochemicals are derived from starting materials of North American origin. Collection was performed in United States Department of Agriculture (USDA) inspected facilities and all materials have been inspected and certified to be free of disease and suitable for exportation. All properties listed are typical characteristics and are not specifications. All suggestions and data are offered in good faith but without guarantee as conditions and methods of use of our products are beyond our control. All claims must be made within 30 days following the date of delivery. The prospective user must determine the suitability of our materials before adopting them on a commercial scale. Suggested uses of our products are not recommendations to use our products in violation of any patent or as a license under any patent of Rockland Immunochemicals, Inc. If you require a commercial license to use this material and do not have one, then return this material, unopened to: Rockland Inc., P.O. BOX 5199, Limerick, Pennsylvania, USA.