

Datasheet for 600-401-H22

Strep-tag II Antibody

Overview

Description:	Anti-Strep-tag II (RABBIT) Antibody - 600-401-H22
Item No.:	600-401-H22
Size:	100 µg
Applications:	ELISA, WB
Reactivity:	Strep-Tag II
Host Species:	Rabbit

Product Details

Background:	Strep-tag II antibody detects amino acid sequence specific for Streptavidin. Streptavidin is a tetrameric protein purified from <i>Streptomyces avidinii</i> . It has wide use in numerous molecular biological protocols due to its strong affinity for biotin. The original Strep-tag is a nine amino acid peptide with high specificity and affinity towards streptavidin. The addition of this tag to the C-terminus of recombinant proteins allowed the simple purification of protein by use of affinity columns. It was re-engineered (and re-named Strep-tag II) to allow it to also be placed at the N-terminus of recombinant proteins. Anti-Strep-tag II antibodies are ideal for investigators involved in GFP and Epitopes research.
Synonyms:	Strep-tag II (NT), StrepII-tag
Host Species:	Rabbit
Clonality:	Polyclonal
Format:	IgG

Target Details

Reactivity:	Strep-Tag II
Immunogen Type:	Other
Immunogen:	Strep-tag II Antibody was produced from whole rabbit serum prepared by repeated immunizations with the amino acid sequence "asWSHPQFEKga".

Purity/Specificity: Anti-Strep-tag II Antibody was affinity purified from monospecific antiserum by immunoaffinity purification. A BLAST analysis was used to suggest cross-reactivity with Strep-tag II with Human and Mouse based on 100% homology with the immunizing sequence. Cross-reactivity with Strep-tag II from other sources has not been determined. This antibody recognizes the amino acid sequence fused to n-terminus "asWSHPQFEKga".

Relevant Links:

- [NCBI - NP_065911](#)
- [UniProtKB - Q9P246](#)
- [GeneID - 57620](#)

Application Details

Tested Applications: ELISA, WB

Application Note: Anti-Strep-tag II Antibody is tested for use in E and WB. Specific conditions for reactivity should be optimized by the end user.

Assay Dilutions: All assays should be optimized by the user. Recommended dilutions (if any) may be listed below.

WB: 0.5-1 ug/mL

Formulation

Physical State: Liquid (sterile filtered)

Concentration: 1.0 mg/mL by UV absorbance at 280 nm

Buffer: 0.02 M Potassium Phosphate, 0.15 M Sodium Chloride, pH 7.2

Preservative: 0.02% (w/v) Sodium Azide

Stabilizer: None

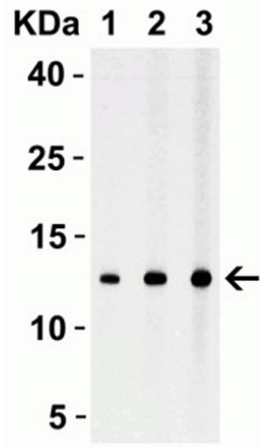
Shipping & Handling

Shipping Condition: Wet Ice

Storage Condition: Antibody can be stored at 4°C up to one year. Antibodies should not be exposed to prolonged high temperatures.

Expiration: Expiration date is one (1) year from date of receipt.

Images



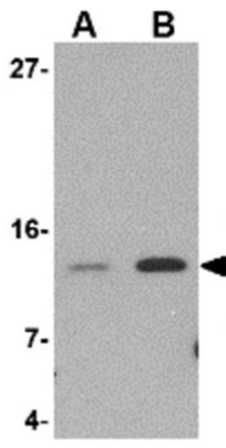
Western Blot

Western Blot with Anti-Strep-tag II.

Load: Loading: 30 ng of Strep-tag II recombinant protein per lane.

Primary antibody: Anti-Strep-tag II at (Lane 1: 0.25 $\mu\text{g}/\text{mL}$ Lane 2: 0.5 $\mu\text{g}/\text{mL}$ Lane 3: 1 $\mu\text{g}/\text{mL}$) for 1h incubation at RT in 5% NFDm/TBST.

Secondary: Goat anti-rabbit IgG HRP conjugate at 1:10000 dilution.



Western Blot

Western Blot with Anti-Strep-tag II.

Load: Strep-tag II recombinant protein, Lane A: 5 ng and Lane B: 25 ng.

Primary antibody: Anti-Strep-tag II at 1 $\mu\text{g}/\text{mL}$ for 1h incubation at RT in 5% NFDm/TBST.

Secondary: Goat anti-rabbit IgG HRP conjugate at 1:10000 dilution.

References

- Arsiwala A et al. Nanopatterning protein antigens to refocus the immune response. *Nanoscale*. (2019)

Disclaimer

This product is for research use only and is not intended for therapeutic or diagnostic applications. Please contact a technical service representative for more information. All products of animal origin manufactured by Rockland Immunochemicals are derived from starting materials of North American origin. Collection was performed in United States Department of Agriculture (USDA) inspected facilities and all materials have been inspected and certified to be free of disease and suitable for exportation. All properties listed are typical characteristics and are not specifications. All suggestions and data are offered in good faith but without guarantee as conditions and methods of use of our products are beyond our control. All claims must be made within 30 days following the date of delivery. The prospective user must determine the suitability of our materials before adopting them on a commercial scale. Suggested uses of our products are not recommendations to use our products in violation of any patent or as a license under any patent of Rockland Immunochemicals, Inc. If you require a commercial license to use this material and do not have one, then return this material, unopened to: Rockland Inc., P.O. BOX 5199, Limerick, Pennsylvania, USA.