

Datasheet for 600-401-H21**STIM2 Antibody****Overview**

Description:	Anti-STIM2 (RABBIT) Antibody - 600-401-H21
Item No.:	600-401-H21
Size:	100 µg
Applications:	ELISA, IF, IHC, WB
Reactivity:	Human, Mouse, Rat
Host Species:	Rabbit

Product Details

Background: STIM2 antibody detects human STIM2. In T lymphocytes, the sole pathway for Ca⁺⁺ entry following antigen-receptor binding is through store-operated Ca⁺⁺-release-activated Ca⁺⁺ (CRAC) channels. These channels are made up of the pore-forming subunit ORAI1 and the stromal interaction molecule 1 (STIM1), a protein that functions as a Ca⁺⁺ sensor and activates the CRAC channels, migrating to the plasma membrane from endoplasmic reticulum (ER)-like sites which act as the Ca⁺⁺ store. A related molecule, STIM2, acts to inhibit the STIM1-mediated store-operated Ca⁺⁺ entry, and can form complexes with STIM1, suggesting they may play a coordinated role in controlling Ca⁺⁺ entry. At least three isoforms of STIM2 are known to exist. This STIM2 antibody is predicted to have no cross-reactivity to STIM1. Anti-STIM2 is ideal for investigators involved enzyme research.

Synonyms:	KIAA1482
Host Species:	Rabbit
Clonality:	Polyclonal
Format:	IgG

Target Details

Gene Name:	STIM2
Reactivity:	Human, Mouse, Rat
Immunogen Type:	Conjugated Peptide

Immunogen:	STIM2 Antibody was produced from whole rabbit serum prepared by repeated immunizations with a peptide near the c-terminus of human STIM2.
Purity/Specificity:	Anti-STIM2 Antibody was affinity purified from monospecific antiserum by immunoaffinity purification. A BLAST analysis was used to suggest cross-reactivity with STIM2 with Human, Rat and Mouse based on 100% homology with the immunizing sequence. Cross-reactivity with STIM2 from other sources has not been determined.
Relevant Links:	<ul style="list-style-type: none">• NCBI - NP_001162588.1• UniProtKB - Q9P246• GeneID - 57620

Application Details

Tested Applications:	ELISA, IF, IHC, WB
Application Note:	Anti-STIM2 Antibody is tested for use in E, WB, IF, and IHC. Expect a band approximately ~83.9 kDa on specific lysates. Western Blot tested in mouse samples; Immunohistochemistry and Immunofluorescence in human samples. Specific conditions for reactivity should be optimized by the end user.
Assay Dilutions:	All assays should be optimized by the user. Recommended dilutions (if any) may be listed below.
IF:	20µg/mL
IHC:	2.5µg/mL
WB:	0.5-1µg/mL

Formulation

Physical State:	Liquid (sterile filtered)
Concentration:	1 mg/mL by UV absorbance at 280 nm
Buffer:	0.02 M Potassium Phosphate, 0.15 M Sodium Chloride, pH 7.2
Preservative:	0.02% (w/v) Sodium Azide
Stabilizer:	None

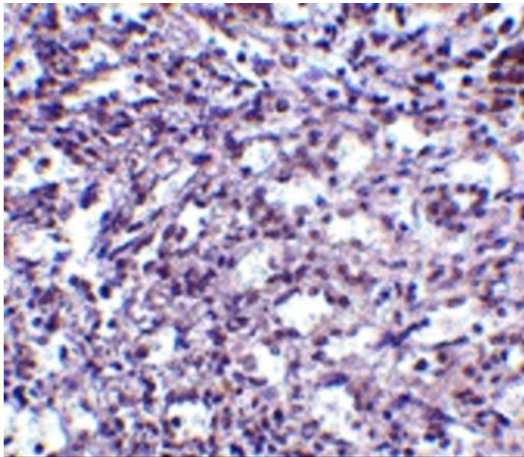
Shipping & Handling

Shipping Condition:	Wet Ice
----------------------------	---------

Storage Condition: Antibody can be stored at 4°C up to one year. Antibodies should not be exposed to prolonged high temperatures.

Expiration: Expiration date is one (1) year from date of receipt.

Images

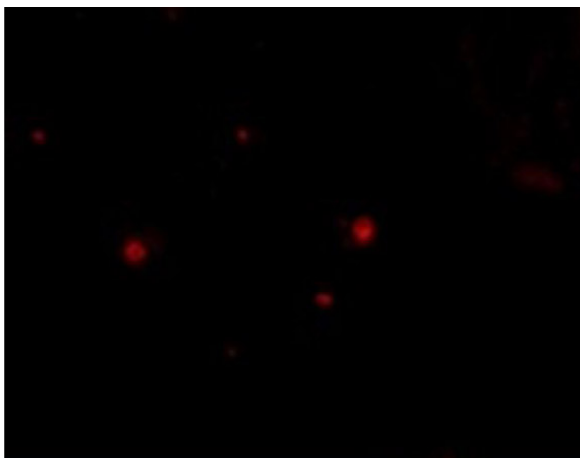


Immunohistochemistry

Immunohistochemistry of STIM2.

Tissue: human spleen tissue.

Primary Antibody: Anti-STIM2 antibody at 2.5 µg/mL.

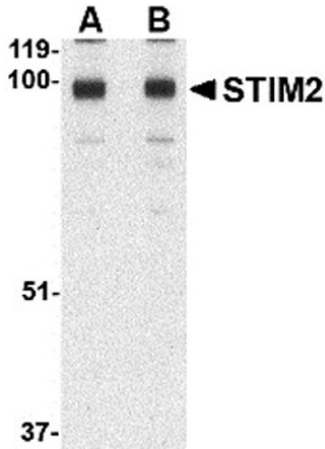


Immunofluorescence Microscopy

Immunofluorescence of STIM2.

Cell: Human Spleen cells.

Primary Antibody: Anti-STIM2 antibody at 20 µg/mL.

**Western Blot**

Western blot analysis of STIM2.

Load: A-20 cell lysate per lane.

Primary Antibody: Anti-STIM2 antibody at (A) 0.5 µg/mL and (B) 1 µg/mL.

Disclaimer

This product is for research use only and is not intended for therapeutic or diagnostic applications. Please contact a technical service representative for more information. All products of animal origin manufactured by Rockland Immunochemicals are derived from starting materials of North American origin. Collection was performed in United States Department of Agriculture (USDA) inspected facilities and all materials have been inspected and certified to be free of disease and suitable for exportation. All properties listed are typical characteristics and are not specifications. All suggestions and data are offered in good faith but without guarantee as conditions and methods of use of our products are beyond our control. All claims must be made within 30 days following the date of delivery. The prospective user must determine the suitability of our materials before adopting them on a commercial scale. Suggested uses of our products are not recommendations to use our products in violation of any patent or as a license under any patent of Rockland Immunochemicals, Inc. If you require a commercial license to use this material and do not have one, then return this material, unopened to: Rockland Inc., P.O. BOX 5199, Limerick, Pennsylvania, USA.