

Datasheet for 600-401-H19**Spred1 Antibody****Overview**

Description:	Anti-Spred1 (RABBIT) Antibody - 600-401-H19
Item No.:	600-401-H19
Size:	100 µg
Applications:	ELISA, IF, IHC, WB
Reactivity:	Human, Mouse, Rat
Host Species:	Rabbit

Product Details

Background: Spred1 antibody detects human Spred1. The Ras-MAP kinase pathway is essential for the differentiation of neuronal cells and myocytes; it is inhibited by Spred1, a member of the Sprouty family of proteins. Spred1 acts by suppressing the phosphorylation and activation of Raf. The Spred proteins have also been implicated in the negative feedback regulation of FGF signaling in embryogenesis and angiogenesis. Further studies have shown that expression levels of Spred1 and Spred2 proteins are inversely correlated with the incidence of tumor invasion and metastasis in human hepatocellular carcinoma (HCC), suggesting that these proteins could be useful as prognostic factors and therapeutic targets in HCC. Defects in this gene are a cause of neurofibromatosis type 1-like syndrome (NFLS). Anti-Spred1 antibodies are ideal for investigators involved in cell cycle proteins and cancer research.

Synonyms:	Sprouty-related EVH1 domain-containing protein 1, NFLS
Host Species:	Rabbit
Clonality:	Polyclonal
Format:	IgG

Target Details

Gene Name:	SPRED1
Reactivity:	Human, Mouse, Rat
Immunogen Type:	Conjugated Peptide

Immunogen:	Spred1 Antibody was produced from whole rabbit serum prepared by repeated immunizations with a peptide corresponding to an internal region of the human Spred1.
Purity/Specificity:	Anti-Spred1 Antibody was affinity purified from monospecific antiserum by immunoaffinity purification. A BLAST analysis was used to suggest cross-reactivity with Spred1 with Human, Rat and Mouse based on 100% homology with the immunizing sequence. Cross-reactivity with Spred1 from other sources has not been determined. This Spred1 antibody is predicated to have no cross reactivity to Spred2 and Spred 3.
Relevant Links:	<ul style="list-style-type: none">• NCBI - NP_689807.1• UniProtKB - Q7Z699• GeneID - 161742

Application Details

Tested Applications:	ELISA, IF, IHC, WB
Application Note:	Anti-Spred1 Antibody is tested for use in E, WB, IF, and IHC. Expect a band approximately ~50.4 kDa on specific lysates. Western Blot, Immunohistochemistry, and Immunofluorescence tested in human samples. Specific conditions for reactivity should be optimized by the end user.
Assay Dilutions:	All assays should be optimized by the user. Recommended dilutions (if any) may be listed below.
IF:	20µg/mL
IHC:	2.5µg/mL
WB:	1-2 ug/mL

Formulation

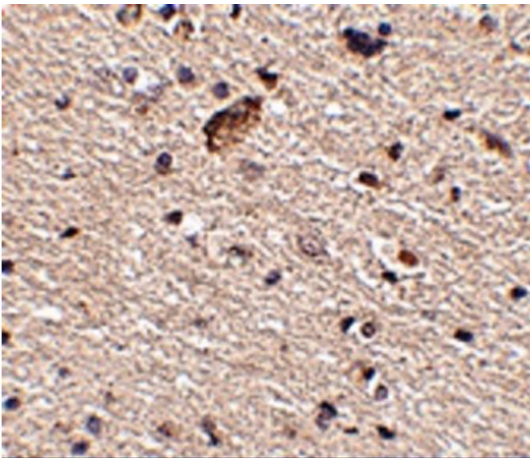
Physical State:	Liquid (sterile filtered)
Concentration:	1 mg/mL by UV absorbance at 280 nm
Buffer:	0.02 M Potassium Phosphate, 0.15 M Sodium Chloride, pH 7.2
Preservative:	0.02% (w/v) Sodium Azide
Stabilizer:	None

Shipping & Handling

Shipping Condition:	Dry Ice
----------------------------	---------

Storage Condition:	Store vial at -20° C prior to opening. Aliquot contents and freeze at -20° C or below for extended storage. Avoid cycles of freezing and thawing. Centrifuge product if not completely clear after standing at room temperature. This product is stable for several weeks at 4° C as an undiluted liquid. Dilute only prior to immediate use.
Expiration:	Expiration date is one (1) year from date of receipt.

Images

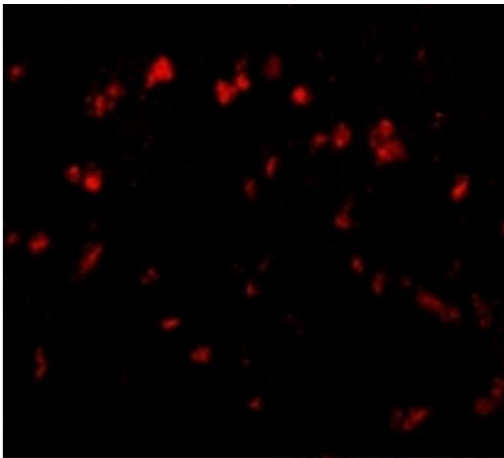


Immunohistochemistry

Immunohistochemistry of Spred1.

Tissue: human brain tissue.

Primary Antibody: Anti-Spred1 antibody at 2.5 µg/mL.

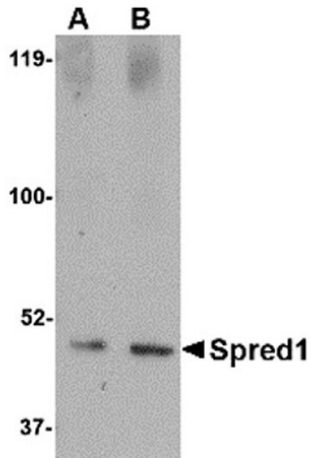


Immunofluorescence Microscopy

Immunofluorescence of Spred1.

Tissue: Human Brain tissue.

Primary Antibody: Anti-Spred1 antibody at 20 µg/mL.

**Western Blot**

Western blot analysis of Spred1.

Load: human brain tissue lysate per lane.

Primary Antibody: Anti-Spred1 antibody at (A) 1 µg/mL and (B) 2 µg/mL.

Disclaimer

This product is for research use only and is not intended for therapeutic or diagnostic applications. Please contact a technical service representative for more information. All products of animal origin manufactured by Rockland Immunochemicals are derived from starting materials of North American origin. Collection was performed in United States Department of Agriculture (USDA) inspected facilities and all materials have been inspected and certified to be free of disease and suitable for exportation. All properties listed are typical characteristics and are not specifications. All suggestions and data are offered in good faith but without guarantee as conditions and methods of use of our products are beyond our control. All claims must be made within 30 days following the date of delivery. The prospective user must determine the suitability of our materials before adopting them on a commercial scale. Suggested uses of our products are not recommendations to use our products in violation of any patent or as a license under any patent of Rockland Immunochemicals, Inc. If you require a commercial license to use this material and do not have one, then return this material, unopened to: Rockland Inc., P.O. BOX 5199, Limerick, Pennsylvania, USA.