

Datasheet for 600-401-H17**Slug Antibody****Overview**

Description:	Anti-Slug (RABBIT) Antibody - 600-401-H17
Item No.:	600-401-H17
Size:	100 µg
Applications:	ELISA, IF, WB
Reactivity:	Human, Mouse
Host Species:	Rabbit

Product Details

Background: Slug antibody detects human Slug protein. Slug, a member of the Snail family of C2H2-type zinc finger transcription factors, was initially identified to be involved in epithelial-mesenchymal transitions as well as the formation of the neural tube during vertebrate embryogenesis. Like Snail, Slug transcription can be induced by growth factors such as FGF, BMP, and TGF-beta. Once expressed, Slug will bind E-box regions of promoters and repress transcription of genes such as E-cadherin and Claudin-. More recently, its expression in breast, esophageal, and colorectal carcinomas has been correlated with poor prognosis for survival. Furthermore, Slug can protect hemopoietic progenitor cells from radiation-induced apoptosis by repressing the p53-mediated transcription of Puma, a BH3-only antagonist of the anti-apoptotic members of the Bcl-2 family. Slug antibody has no cross-reactivity to Snail protein. Anti-Slug antibodies are ideal for investigators involved in transcription factors, cell cycle proteins and cancer research.

Synonyms:	SLUG, SLUGH
Host Species:	Rabbit
Clonality:	Polyclonal
Format:	IgG

Target Details

Gene Name:	SNAI2
Reactivity:	Human, Mouse
Immunogen Type:	Conjugated Peptide

Immunogen:	Slug Antibody was produced from whole rabbit serum prepared by repeated immunizations with a peptide from an internal region of human Slug.
Purity/Specificity:	Anti-Slug Antibody was affinity purified from monospecific antiserum by immunoaffinity purification. A BLAST analysis was used to suggest cross-reactivity with Slug with Human and Mouse based on 100% homology with the immunizing sequence. Cross-reactivity with Slug from other sources has not been determined.
Relevant Links:	<ul style="list-style-type: none">• NCBI - NP_003059.1• UniProtKB - O43623• GeneID - 6591

Application Details

Tested Applications:	ELISA, IF, WB
Application Note:	Anti-SLUG Antibody is tested for use in E, WB, and IF. Expect a band approximately ~29.9kDa on specific lysates. Specific conditions for reactivity should be optimized by the end user.
Assay Dilutions:	All assays should be optimized by the user. Recommended dilutions (if any) may be listed below.
IF:	20µg/mL
WB:	0.5 ug/mL

Formulation

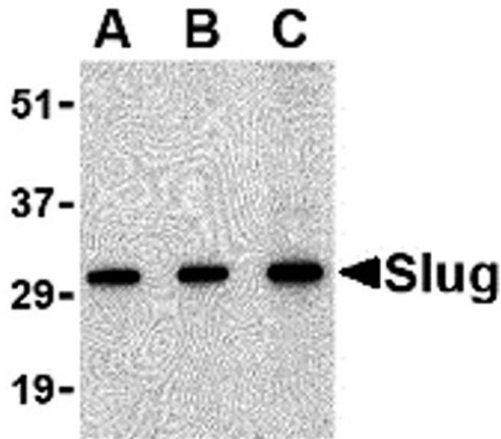
Physical State:	Liquid (sterile filtered)
Concentration:	1 mg/mL by UV absorbance at 280 nm
Buffer:	0.02 M Potassium Phosphate, 0.15 M Sodium Chloride, pH 7.2
Preservative:	0.02% (w/v) Sodium Azide
Stabilizer:	None

Shipping & Handling

Shipping Condition:	Dry Ice
Storage Condition:	Store vial at -20° C prior to opening. Aliquot contents and freeze at -20° C or below for extended storage. Avoid cycles of freezing and thawing. Centrifuge product if not completely clear after standing at room temperature. This product is stable for several weeks at 4° C as an undiluted liquid. Dilute only prior to immediate use.

Expiration: Expiration date is one (1) year from date of receipt.

Images

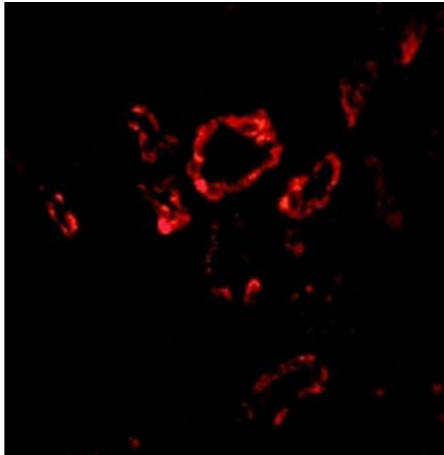


Western Blot

Western blot analysis of Slug.

Load: 293 cell lysate per lane.

Primary Antibody: Anti-Slug antibody at in (A) 0.5 $\mu\text{g}/\text{mL}$, (B) 1 $\mu\text{g}/\text{mL}$ and (C) 2 $\mu\text{g}/\text{mL}$.



Immunofluorescence Microscopy

Immunofluorescence of Slug.

Tissue: human kidney tissue.

Primary Antibody: Anti-Slug antibody at 20 $\mu\text{g}/\text{mL}$.

Disclaimer

This product is for research use only and is not intended for therapeutic or diagnostic applications. Please contact a technical service representative for more information. All products of animal origin manufactured by Rockland Immunochemicals are derived from starting materials of North American origin. Collection was performed in United States Department of Agriculture (USDA) inspected facilities and all materials have been inspected and certified to be free of disease and suitable for exportation. All properties listed are typical characteristics and are not specifications. All suggestions and data are offered in good faith but without guarantee as conditions and methods of use of our products are beyond our control. All claims must be made within 30 days following the date of delivery. The prospective user must determine the suitability of our materials before adopting them on a commercial scale. Suggested uses of our products are not recommendations to use our products in violation of any patent or as a license under any patent of Rockland Immunochemicals, Inc. If you require a commercial license to use this material and do not have one, then return this material, unopened to: Rockland Inc., P.O. BOX 5199, Limerick, Pennsylvania, USA.