

Datasheet for 600-401-H13**PTK7 Antibody****Overview**

Description:	Anti-PTK7 (RABBIT) Antibody - 600-401-H13
Item No.:	600-401-H13
Size:	100 µg
Applications:	ELISA, IF, IHC, WB
Reactivity:	Human, Mouse, Rat
Host Species:	Rabbit

Product Details

Background: PTK7 antibody detects PTK7 protein. Protein-tyrosine kinases (PTKs) play important roles in regulating cell proliferation and differentiation during development. One member of the PTK family, PTK7, has been suggested to regulate the planar cell polarity (PCP) pathway in vertebrates and may play a role in neural convergent extension and neural tube closure. PTK7 has also been implicated in the development of cancer. Loss of PTK7 expression was seen in several melanoma cell lines and biopsies. Conversely, high-throughput analysis of acute myeloid leukemia samples showed an increased level of PTK7 expression compared to normal bone marrow and purified CD34+ cells. Multiple isoforms of PTK7 are known to exist. Anti-PTK7 antibodies are ideal for investigators involved in cancer and cell cycle protein research.

Synonyms:	CCK4
Host Species:	Rabbit
Clonality:	Polyclonal
Format:	IgG

Target Details

Gene Name:	PTK7
Reactivity:	Human, Mouse, Rat
Immunogen Type:	Conjugated Peptide
Immunogen:	PTK7 Antibody was produced from whole rabbit serum prepared by repeated immunizations with a peptide near the c-terminus of human PTK7.

Purity/Specificity: Anti-PTK7 Antibody was affinity purified from monospecific antiserum by immunoaffinity purification. A BLAST analysis was used to suggest cross-reactivity with PTK7 with Human, Rat and Mouse based on 100% homology with the immunizing sequence. Cross-reactivity with PTK7 from other sources has not been determined.

Relevant Links:

- [NCBI - AAH71557](#)
- [UniProtKB - Q13308](#)
- [GeneID - 5754](#)

Application Details

Tested Applications: ELISA, IF, IHC, WB

Application Note: Anti-PTK7 Antibody is tested for use in E, WB, IF, and IHC. Expect a band approximately ~118.3 kDa on specific lysates. Western Blot tested in human, mouse, and rat samples; Immunohistochemistry in human samples and Immunofluorescence in human samples. Specific conditions for reactivity should be optimized by the end user.

Assay Dilutions: All assays should be optimized by the user. Recommended dilutions (if any) may be listed below.

IF: 20µg/mL

IHC: 2.5µg/mL

WB: 1µg/mL

Formulation

Physical State: Liquid (sterile filtered)

Concentration: 1 mg/mL by UV absorbance at 280 nm

Buffer: 0.02 M Potassium Phosphate, 0.15 M Sodium Chloride, pH 7.2

Preservative: 0.02% (w/v) Sodium Azide

Stabilizer: None

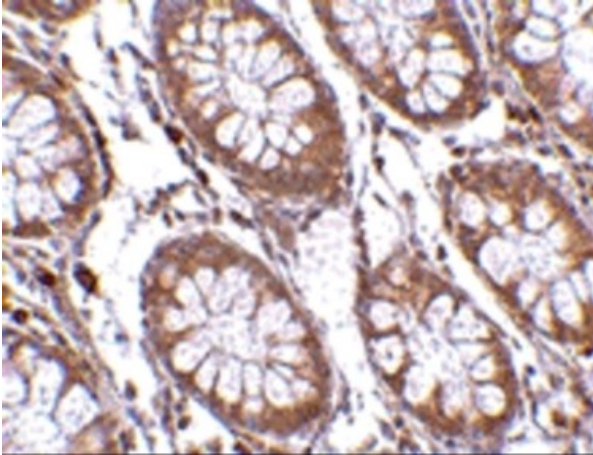
Shipping & Handling

Shipping Condition: Wet Ice

Storage Condition: Antibody can be stored at 4°C up to one year. Antibodies should not be exposed to prolonged high temperatures.

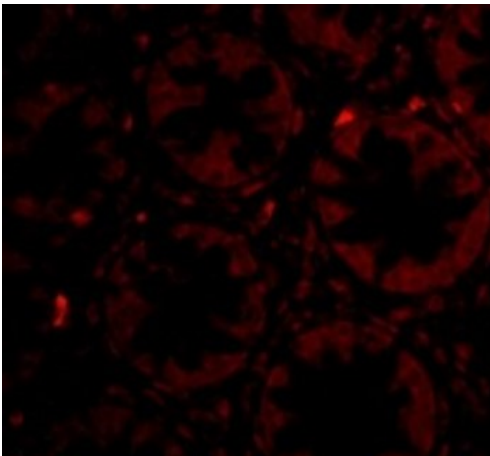
Expiration: Expiration date is one (1) year from date of receipt.

Images



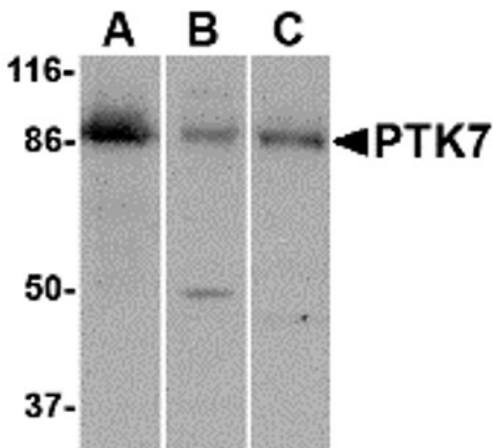
Immunohistochemistry

Immunohistochemistry of PTK7.
Tissue: human colon tissue.
Primary Antibody: Anti-PTK7 antibody at 2.5 µg/mL.



Immunofluorescence Microscopy

Immunofluorescence of PTK7.
Cell: Human Colon cells.
Primary Antibody: Anti-PTK7 antibody at 20 µg/mL.



Western Blot

Western blot analysis of PTK7.
Load: (A) human colon, (B) mouse kidney and (C) rat liver tissue lysate.
Primary Antibody: Anti-PTK7 antibody at 1 µg/mL.

Disclaimer

This product is for research use only and is not intended for therapeutic or diagnostic applications. Please contact a technical service representative for more information. All products of animal origin manufactured by Rockland Immunochemicals are derived from starting materials of North American origin. Collection was performed in United States Department of Agriculture (USDA) inspected facilities and all materials have been inspected and certified to be free of disease and suitable for exportation. All properties listed are typical characteristics and are not specifications. All suggestions and data are offered in good faith but without guarantee as conditions and methods of use of our products are beyond our control. All claims must be made within 30 days following the date of delivery. The prospective user must determine the suitability of our materials before adopting them on a commercial scale. Suggested uses of our products are not recommendations to use our products in violation of any patent or as a license under any patent of Rockland Immunochemicals, Inc. If you require a commercial license to use this material and do not have one, then return this material, unopened to: Rockland Inc., P.O. BOX 5199, Limerick, Pennsylvania, USA.