

**Datasheet for 600-401-H05****NOD2 Antibody****Overview**

<b>Description:</b>	Anti-NOD2 (RABBIT) Antibody - 600-401-H05
<b>Item No.:</b>	600-401-H05
<b>Size:</b>	100 µg
<b>Applications:</b>	ELISA, IF, IHC, WB
<b>Reactivity:</b>	Human
<b>Host Species:</b>	Rabbit

**Product Details**

<b>Background:</b>	NOD2 Antibody detects human NOD2. Apaf-1 and NOD1 are members of a new family, which are involved in the regulation of apoptosis and immune response. Each of them contains a caspase recruitment domain (CARD) and a nucleotide-binding oligomerization domain (NOD). A third member in this family was recently identified and designated NOD2. NOD2 interacts with RICK via a homophilic CARD-CARD interaction. NOD2 activates NF-kappaB, which is regulated by its carboxy-terminal leucine-rich repeat domain that acts as an intracellular receptor for components of bacteria. The variants of NOD2, either a frameshift or a missense, were associated with Crohn's disease that is a main type of chronic inflammatory bowel disease. Anti-NOD2 antibodies are ideal for investigators involved in NFkappaB and Cytokines and Growth factor research.
<b>Synonyms:</b>	Nucleotide-binding oligomerization domain-containing protein 2, Caspase recruitment domain-containing protein 15, Inflammatory bowel disease protein 1, NOD2, CARD15, IBD1
<b>Host Species:</b>	Rabbit
<b>Clonality:</b>	Polyclonal
<b>Format:</b>	IgG

**Target Details**

<b>Gene Name:</b>	NOD2
<b>Reactivity:</b>	Human
<b>Immunogen Type:</b>	Conjugated Peptide

<b>Immunogen:</b>	NOD2 Antibody was produced from whole rabbit serum prepared by repeated immunizations with a synthetic peptide corresponding to amino acids at the c-terminus of human NOD2.
<b>Purity/Specificity:</b>	Anti-NOD2 Antibody is immunoaffinity chromatography purified IgG. A BLAST analysis was used to suggest cross-reactivity with NOD2 with Human based on 100% homology with the immunizing sequence. Cross-reactivity with NOD2 from other sources has not been determined. Antibody has no cross reaction with NOD1.
<b>Relevant Links:</b>	<ul style="list-style-type: none"><li>• <a href="#">NCBI - NP_001280486.1</a></li><li>• <a href="#">UniProtKB - Q9HC29</a></li><li>• <a href="#">GeneID - 64127</a></li><li>• <a href="#">600-401-H05 SDS</a></li></ul>

## Application Details

<b>Tested Applications:</b>	ELISA, IF, IHC, WB
<b>Application Note:</b>	Anti-NOD2 Antibody is tested for use in E, WB, IF, and ICC. Expect a band approximately ~115.2 kDa on specific lysates. Specific conditions for reactivity should be optimized by the end user.
<b>Assay Dilutions:</b>	All assays should be optimized by the user. Recommended dilutions (if any) may be listed below.
<b>IF:</b>	20µg/mL
<b>WB:</b>	2-4 ug/mL

## Formulation

<b>Physical State:</b>	Liquid (sterile filtered)
<b>Concentration:</b>	1mg/ml by UV absorbance at 280 nm
<b>Buffer:</b>	0.02 M Potassium Phosphate, 0.15 M Sodium Chloride, pH 7.2
<b>Preservative:</b>	0.02% (w/v) Sodium Azide
<b>Stabilizer:</b>	None

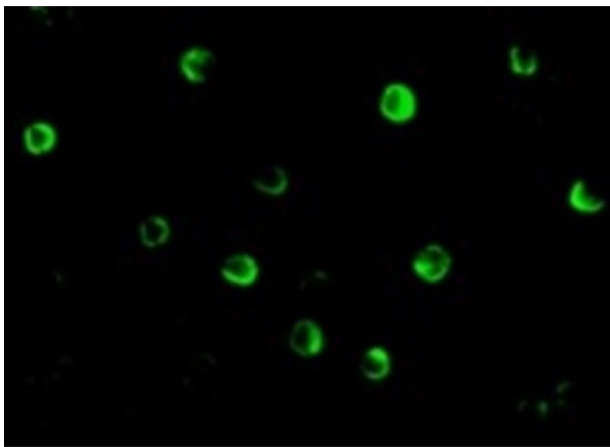
## Shipping & Handling

<b>Shipping Condition:</b>	Dry Ice
----------------------------	---------

**Storage Condition:** Store vial at -20° C prior to opening. Aliquot contents and freeze at -20° C or below for extended storage. Avoid cycles of freezing and thawing. Centrifuge product if not completely clear after standing at room temperature. This product is stable for several weeks at 4° C as an undiluted liquid. Dilute only prior to immediate use.

**Expiration:** Expiration date is one (1) year from date of receipt.

## Images

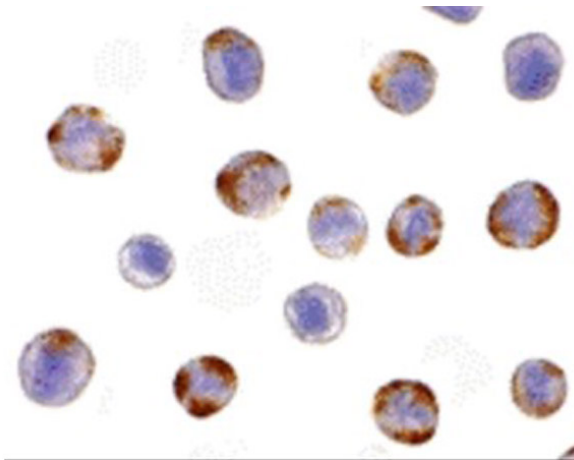


### Immunofluorescence Microscopy

Immunofluorescence of NOD2.

Cell: HeLa cells.

Primary Antibody: Anti-NOD2 antibody at 20 µg/mL.

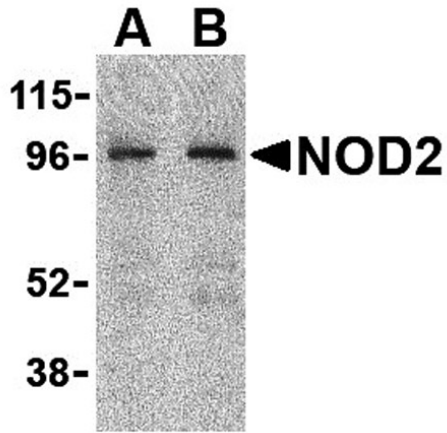


### Immunocytochemistry

Immunocytochemistry of NOD2.

Cell: HeLa cells.

Primary Antibody: Anti-NOD2 antibody at 10 µg/mL.

**Western Blot**

Western blot analysis of NOD2.

Load: HeLa cell lysate.

Primary Antibody: Anti-NOD2 antibody at (A) 2µg/mL and (B) 4µg/mL.

**Disclaimer**

This product is for research use only and is not intended for therapeutic or diagnostic applications. Please contact a technical service representative for more information. All products of animal origin manufactured by Rockland Immunochemicals are derived from starting materials of North American origin. Collection was performed in United States Department of Agriculture (USDA) inspected facilities and all materials have been inspected and certified to be free of disease and suitable for exportation. All properties listed are typical characteristics and are not specifications. All suggestions and data are offered in good faith but without guarantee as conditions and methods of use of our products are beyond our control. All claims must be made within 30 days following the date of delivery. The prospective user must determine the suitability of our materials before adopting them on a commercial scale. Suggested uses of our products are not recommendations to use our products in violation of any patent or as a license under any patent of Rockland Immunochemicals, Inc. If you require a commercial license to use this material and do not have one, then return this material, unopened to: Rockland Inc., P.O. BOX 5199, Limerick, Pennsylvania, USA.