

**Datasheet for 600-401-GV5****PKM2 Antibody****Overview**

<b>Description:</b>	Anti-PKM2 (RABBIT) Antibody - 600-401-GV5
<b>Item No.:</b>	600-401-GV5
<b>Size:</b>	100 µg
<b>Applications:</b>	WB
<b>Reactivity:</b>	Human
<b>Host Species:</b>	Rabbit

**Product Details**

<b>Background:</b>	Anti-PKM2 Antibody was designed, produced, and validated as part of the Joy Cappel Young Investigator Award (JCYIA). Pyruvate kinase has been shown to be expressed in tumor, embryonic and normal proliferating cells in varying levels. Studies show that when PKM2 is secreted it can induce EGFR phosphorylation which stimulates the EGFR downstream pathway. Previously PKM has been shown to be critical for aerobic glycolysis. Four isoforms of PKM play alternative roles within the system and post-translational modifications along these isoforms induce multiple pathways making this Anti-PKM2 antibody ideal for investigators involved in cancer research and post-translational modifications.
<b>Synonyms:</b>	rabbit anti-PKM2 antibody, PKM 2, PKM-2, Pyruvate kinase PKM, Cytosolic thyroid hormone-binding protein, CTHBP, Opa-interacting protein 3, Pyruvate kinase 2/3, Pyruvate kinase muscle isozyme, Thyroid hormone-binding protein 1, THBP1, Tumor M2-PK, p58, OIP3, OIP-3, PK2, PK3
<b>Host Species:</b>	Rabbit
<b>Clonality:</b>	Polyclonal
<b>Format:</b>	IgG

**Target Details**

<b>Gene Name:</b>	PKM
<b>Reactivity:</b>	Human
<b>Immunogen Type:</b>	Conjugated Peptide

<b>Immunogen:</b>	Affinity purified Anti-PKM2 antibody was prepared from whole rabbit serum produced by repeated immunizations with a synthetic peptide near the internal portion of human PKM2 protein.
<b>Purity/Specificity:</b>	Anti-PKM2 is directed against human PKM2 at an internal position. This product is an affinity purified antibody produced by immunoaffinity chromatography using peptide coupled to agarose beads. A BLAST analysis was used to suggest reactivity with this protein in African frog and rat based on 100% homology and rabbit and mouse based on 93.3% homology for the immunogen sequence.
<b>Relevant Links:</b>	<ul style="list-style-type: none"><li>• <a href="#">UniProtKB - P14618</a></li><li>• <a href="#">GeneID - 5315</a></li><li>• <a href="#">NCBI - NP_001193725.1</a></li></ul>

## Application Details

<b>Tested Applications:</b>	WB
<b>Application Note:</b>	This affinity purified antibody has been tested for use in western blot. Specific conditions for reactivity should be optimized by the end user. Expect a band 56-58 kDa in size corresponding to PKM2 by western blotting in the appropriate cell lysate or extract.
<b>Assay Dilutions:</b>	All assays should be optimized by the user. Recommended dilutions (if any) may be listed below.
<b>ELISA:</b>	5 µg/ml
<b>WB:</b>	1 µg/ml

## Formulation

<b>Physical State:</b>	Liquid (sterile filtered)
<b>Concentration:</b>	1.0 mg/ml by UV absorbance at 280 nm
<b>Buffer:</b>	0.02 M Potassium Phosphate, 0.15 M Sodium Chloride, pH 7.2
<b>Preservative:</b>	0.01% (w/v) Sodium Azide
<b>Stabilizer:</b>	None

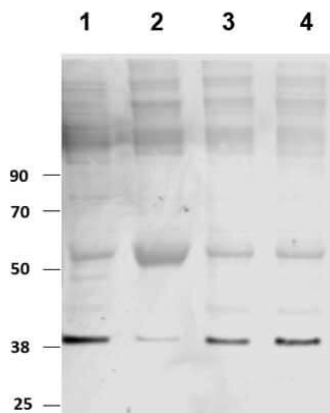
## Shipping & Handling

<b>Shipping Condition:</b>	Dry Ice
----------------------------	---------

**Storage Condition:** Store vial at -20° C prior to opening. Aliquot contents and freeze at -20° C or below for extended storage. Avoid cycles of freezing and thawing. Centrifuge product if not completely clear after standing at room temperature. This product is stable for several weeks at 4° C as an undiluted liquid. Dilute only prior to immediate use.

**Expiration:** Expiration date is one (1) year from date of receipt.

## Images



### Western Blot

Western Blot of Rabbit Anti-PKM2 antibody. Lane 1 and 2: iPSC lysate. Lane 3 and 4: myeloid lysate (iPSC derived). Load: 100 µg per lane. Primary antibody: PKM2 antibody at 1:1000 for overnight at 4°C. Secondary antibody: IRDye800™ rabbit secondary antibody at 1:10,000 for 45 min at RT. Block: 5% Odyssey blocking buffer for 120 min at RT. Predicted/Observed size: 57 kda for PKM2. Other band(s): PKM2 splice variants and isoforms as PKM2 is a highly modified protein.

## Disclaimer

This product is for research use only and is not intended for therapeutic or diagnostic applications. Please contact a technical service representative for more information. All products of animal origin manufactured by Rockland Immunochemicals are derived from starting materials of North American origin. Collection was performed in United States Department of Agriculture (USDA) inspected facilities and all materials have been inspected and certified to be free of disease and suitable for exportation. All properties listed are typical characteristics and are not specifications. All suggestions and data are offered in good faith but without guarantee as conditions and methods of use of our products are beyond our control. All claims must be made within 30 days following the date of delivery. The prospective user must determine the suitability of our materials before adopting them on a commercial scale. Suggested uses of our products are not recommendations to use our products in violation of any patent or as a license under any patent of Rockland Immunochemicals, Inc. If you require a commercial license to use this material and do not have one, then return this material, unopened to: Rockland Inc., P.O. BOX 5199, Limerick, Pennsylvania, USA.