

**Datasheet for 600-401-GU0****Integrin beta 3 Antibody****Overview**

<b>Description:</b>	Anti-Integrin beta 3 (RABBIT) Antibody - 600-401-GU0
<b>Item No.:</b>	600-401-GU0
<b>Size:</b>	100 µg
<b>Applications:</b>	ELISA, IHC, WB
<b>Reactivity:</b>	Human
<b>Host Species:</b>	Rabbit

**Product Details**

**Background:** Integrin beta 3, also called ITB3, belongs to the integrin beta chain family. Integrin alpha-V/beta-3 (ITGAV/ITB3) is a receptor for cytotactin, fibronectin, laminin, matrix metalloproteinase-2, osteopontin, osteomodulin, prothrombin, thrombospondin, vitronectin and von Willebrand factor. Integrin alpha-IIb/beta-3 (ITGA2B/ITGB3) is a receptor for fibronectin, fibrinogen, plasminogen, prothrombin, thrombospondin and vitronectin. Integrins alpha-IIb/beta-3 and alpha-V/beta-3 recognize the sequence R-G-D in a wide array of ligands. ITGA2B/ITGB3 recognizes the sequence H-H-L-G-G-A-K-Q-A-G-D-V in fibrinogen gamma chain. Following activation integrin alpha-IIb/beta-3 brings about platelet/platelet interaction through binding of soluble fibrinogen. This step leads to rapid platelet aggregation which physically plugs ruptured endothelial surface. ITGAV/ITB3 binds to CX3CL1, NRG1, FGF1, IGF1, PLA2G2A, and FBN1. ITGAV/ITGB3 acts as a receptor for herpes virus 8/HHV-8, coxsackievirus A9, Hantaan virus, cytomegalovirus/HHV-5, human metapneumovirus, human parechovirus 1, and west nile virus. Integrin beta 3 may be associated with disorders such as Glanzmann thrombasthenia, myocardial infarction, purpura, and insulin-like growth factor i deficiency. Anti-Integrin beta 3 Antibody is useful for researched interested in RET Signaling, MAPK-Erk Pathway, ERK Signaling, and Integrin Pathway Research.

<b>Synonyms:</b>	rabbit anti-Integrin beta 3 antibody, Integrin Subunit beta 3, IGTB3, GP3A, Platelet membrane glycoprotein IIIa, GPIIIa, Integrin beta-3, CD61, CD61 Antibody
<b>Host Species:</b>	Rabbit
<b>Clonality:</b>	Polyclonal
<b>Format:</b>	IgG

## Target Details

<b>Gene Name:</b>	ITGB3
<b>Reactivity:</b>	Human
<b>Immunogen Type:</b>	Conjugated Peptide
<b>Immunogen:</b>	Anti-Integrin beta 3 antibody was prepared from whole rabbit serum produced by repeated immunizations with a synthetic peptide corresponding to a C-Term portion of human Integrin beta 3 conjugated to Keyhole Limpet Hemocyanin (KLH).
<b>Purity/Specificity:</b>	This affinity purified antibody is directed against human Integrin beta 3. This product was affinity purified from monospecific antiserum by immunoaffinity purification. Blast analysis of the sequence of the immunogen shows 100% identity with human and mouse.
<b>Relevant Links:</b>	<ul style="list-style-type: none"><li>• <a href="#">UniProtKB - P05106</a></li><li>• <a href="#">NCBI - NP_000203.2</a></li><li>• <a href="#">GenelD - 3690</a></li></ul>

## Application Details

<b>Tested Applications:</b>	ELISA, IHC, WB
<b>Application Note:</b>	Anti-Integrin beta-3 Antibody has been tested in Western Blot, ELISA and IHC. Positive control lysates used U-87 p/n (W09-001-GX2) and MDA-MB-435 p/n (W09-001-A39) @ 1µg/mL in WB. Expect possible bands at ~80, 100 and 130 kDa in western blot using appropriate lysates. Immunohistochemistry application with human breast carcinoma tissue is recommended. Although not tested, this antibody is likely functional in flow cytometry and immunoprecipitation. This antibody is not recommended in immunofluorescence detection.
<b>Assay Dilutions:</b>	All assays should be optimized by the user. Recommended dilutions (if any) may be listed below.
<b>ELISA:</b>	5.0 µg/ml
<b>FC:</b>	User Optimized
<b>IF:</b>	Not recommended
<b>IHC:</b>	1:100 - 1:200
<b>IP:</b>	User Optimized
<b>WB:</b>	1:1000

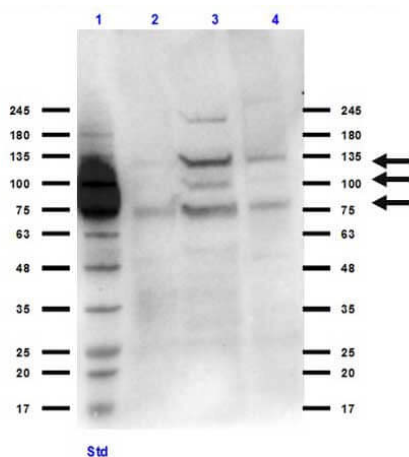
## Formulation

<b>Physical State:</b>	Liquid (sterile filtered)
<b>Concentration:</b>	1.0 mg/ml by UV absorbance at 280 nm
<b>Buffer:</b>	0.02 M Potassium Phosphate, 0.15 M Sodium Chloride, pH 7.2
<b>Preservative:</b>	0.01% (w/v) Sodium Azide
<b>Stabilizer:</b>	None

## Shipping & Handling

<b>Shipping Condition:</b>	Dry Ice
<b>Storage Condition:</b>	Store vial at -20° C prior to opening. Aliquot contents and freeze at -20° C or below for extended storage. Avoid cycles of freezing and thawing. Centrifuge product if not completely clear after standing at room temperature. This product is stable for several weeks at 4° C as an undiluted liquid. Dilute only prior to immediate use.
<b>Expiration:</b>	Expiration date is one (1) year from date of receipt.

## Images



### Western Blot

Western Blot of Rabbit anti-Integrin beta 3 antibody. Lane 1: MW ladder (opal pre-stained) p/n (MB-210-0500). Lane 2: HUVEC whole cell lysate. Lane 3: U87 whole cell lysate (W09-001-GX2). Lane 4: MDA-MB-435 whole cell lysate p/n (W09-001-A39). Load: 35 µg per lane. Primary antibody: Integrin beta 3 antibody at 1:1000 for overnight at 4°C. Secondary antibody: rabbit secondary HRP antibody p/n (611-103-122) at 1:10,000 for 45 min at RT. Block: BlockOut buffer - p/n (MB-073) overnight at 4°C. Predicted/Observed size: ~87kDa/~80, 100 and 130 kDa for integrin beta 3. Other band(s): none.

## Disclaimer

This product is for research use only and is not intended for therapeutic or diagnostic applications. Please contact a technical service representative for more information. All products of animal origin manufactured by Rockland Immunochemicals are derived from starting materials of North American origin. Collection was performed in United States Department of Agriculture (USDA) inspected facilities and all materials have been inspected and certified to be free of disease and suitable for exportation. All properties listed are typical characteristics and are not specifications. All suggestions and data are offered in good faith but without guarantee as conditions and methods of use of our products are beyond our control. All claims must be made within 30 days following the date of delivery. The prospective user must determine the suitability of our materials before adopting them on a commercial scale. Suggested uses of our products are not recommendations to use our products in violation of any patent or as a license under any patent of Rockland Immunochemicals, Inc. If you require a commercial license to use this material and do not have one, then return this material, unopened to: Rockland Inc., P.O. BOX 5199, Limerick, Pennsylvania, USA.