

Datasheet for 600-401-GT9S**EZH1 Antibody****Overview**

Description:	Anti-EZH1 (RABBIT) Antibody - 600-401-GT9S
Item No.:	600-401-GT9S
Size:	25 µL
Applications:	ELISA, WB
Reactivity:	Human, Mouse
Host Species:	Rabbit

Product Details

Background:	Anti-Ezh1 Antibody was designed, produced, and validated as part of the Joy Cappel Young Investigator Award (JCYIA). Anti-EZH1 Antibody detects human EZH1. Polycomb group (PcG) proteins are essential epigenetic regulators in normal tissue homeostasis and are involved in transcriptional repression. The PcG members Ezh2 and Ezh1 are important determinants of embryonic stem cell identity, and the transcript levels of these histone methyltransferases are inversely correlated during development. Recent studies have shown that EZH1 also has histone H3K27 methyltransferase activity and binds to an overlapping subset of genes. EZH1 and EZH2 have different expression patterns. EZH2 is found in actively proliferating cells, whereas EZH1 expression is higher in nonproliferative adult tissues. EZH1 partially compensates for the loss of EZH2, as shown in cells lacking only Ezh2. In mice, EZH1 is a regulator of homeotic gene expression implicated in the assembly of repressive protein complexes in chromatin. Anti-EZH1 Antibody is ideal for investigators studying pathogenesis of hematological malignancies.
Synonyms:	rabbit anti-EZH1 antibody, KIAA0388, Histone-lysine N-methyltransferase EZH1, ENX-2, Enhancer of zeste homolog 1, EZH-1, EZH 1
Host Species:	Rabbit
Clonality:	Polyclonal
Format:	IgG

Target Details

Gene Name:	EZH1
Reactivity:	Human, Mouse

Immunogen Type:	Conjugated Peptide
Immunogen:	Affinity purified Anti-EZH1 antibody was prepared from whole rabbit serum produced by repeated immunizations with a synthetic peptide near the internal portion of human EZH1 protein.
Purity/Specificity:	Anti-EZH1 is directed against human EZH1 at an internal position. This product is an affinity purified antibody produced by immunoaffinity chromatography using peptide coupled to agarose beads. A BLAST analysis was used to suggest reactivity with this protein in mouse, bovine, and orangutan species based on 100% homology for the immunogen sequence.
Relevant Links:	<ul style="list-style-type: none">• UniProtKB - Q92800• NCBI - NP_001982.2• GeneID - 2145

Application Details

Tested Applications:	ELISA, WB
Application Note:	This affinity purified antibody has been tested for use in ELISA and western blot. Specific conditions for reactivity should be optimized by the end user. Expect a band ~86 kDa in size corresponding to Ezh1 by western blotting in the appropriate cell lysate or extract. Tested using positive control NIH/3T3 nuclear extract p/n W10-001-A74.
Assay Dilutions:	All assays should be optimized by the user. Recommended dilutions (if any) may be listed below.
ELISA:	1:50,000
WB:	1.0 ug/ml

Formulation

Physical State:	Liquid (sterile filtered)
Concentration:	0.95 mg/ml by UV absorbance at 280 nm
Buffer:	0.02 M Potassium Phosphate, 0.15 M Sodium Chloride, pH 7.2
Preservative:	0.01% (w/v) Sodium Azide
Stabilizer:	None

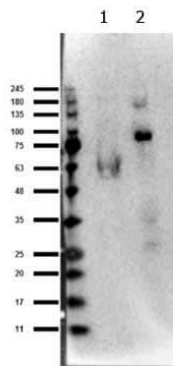
Shipping & Handling

Shipping Condition:	Dry Ice
----------------------------	---------

Storage Condition: Store vial at -20° C or below prior to opening. This vial contains a relatively low volume of reagent (25 µL). To minimize loss of volume dilute 1:10 by adding 225 µL of the buffer stated above directly to the vial. Recap, mix thoroughly and briefly centrifuge to collect the volume at the bottom of the vial. Use this intermediate dilution when calculating final dilutions as recommended below. Store the vial at -20°C or below after dilution. Avoid cycles of freezing and thawing.

Expiration: Expiration date is one (1) year from date of receipt.

Images



Western Blot

Western Blot of Rabbit anti-Ezh1 antibody. Marker: Opal Pre-stained ladder (p/n MB-210-0500). Lane 1: NIH/3T3 WCL (p/n W10-000-358). Lane 2: NIH/3T3 nuclear extract (p/n W10-001-A74). Load: 10 µg per lane. Primary antibody: Ezh1 antibody at 1:1,000 for overnight at 4°C. Secondary antibody: Peroxidase rabbit secondary antibody (p/n 611-103-122) at 1:70,000 for 60 min at RT. Blocking Buffer: (p/n MB-070) for 30 min at RT. Predicted/Observed size: 86 kDa for Ezh1 in lane 2 NIH/3T3 nuclear extract (p/n W10-001-A74).

Disclaimer

This product is for research use only and is not intended for therapeutic or diagnostic applications. Please contact a technical service representative for more information. All products of animal origin manufactured by Rockland Immunochemicals are derived from starting materials of North American origin. Collection was performed in United States Department of Agriculture (USDA) inspected facilities and all materials have been inspected and certified to be free of disease and suitable for exportation. All properties listed are typical characteristics and are not specifications. All suggestions and data are offered in good faith but without guarantee as conditions and methods of use of our products are beyond our control. All claims must be made within 30 days following the date of delivery. The prospective user must determine the suitability of our materials before adopting them on a commercial scale. Suggested uses of our products are not recommendations to use our products in violation of any patent or as a license under any patent of Rockland Immunochemicals, Inc. If you require a commercial license to use this material and do not have one, then return this material, unopened to: Rockland Inc., P.O. BOX 5199, Limerick, Pennsylvania, USA.