

Datasheet for 600-401-GN8**MEK2 N-Term Antibody****Overview**

Description:	Anti-MEK2 (RABBIT) Antibody - 600-401-GN8
Item No.:	600-401-GN8
Size:	100 µg
Applications:	ELISA, IHC, WB
Reactivity:	Human, Mouse
Host Species:	Rabbit

Product Details

Background:	MEK2 antibodies detect the MEK2 isoform. Mitogen-activated protein kinase kinase 2, also known as MEK2 or MKK2, is an integral component of the MAP kinase cascade that regulates cell growth and differentiation. This pathway also plays a key role in synaptic plasticity in the brain. Activated MEK 2 acts as a dual specificity kinase phosphorylating both a threonine and a tyrosine residue on MAP kinase. MEK1 and MEK2 are about 80% identical to each other, and nearly identical within the kinase domain. The MEK2 antibody is ideal for investigators involved in Neuroscience, Cell Signaling and Cancer Research.
Synonyms:	rabbit anti-MEK2 antibody, Dual specificity mitogen-activated protein kinase kinase 2, MAP kinase kinase 2, MAPKK 2, MAP2K2, MEK, MEK 2, MKK2, PRKMK2, CFC4, MEK-2, ERK activator kinase 2, MAPK/ERK kinase 2
Host Species:	Rabbit
Clonality:	Polyclonal
Format:	IgG

Target Details

Gene Name:	MAP2K2
Reactivity:	Human, Mouse
Immunogen Type:	Conjugated Peptide
Immunogen:	Anti-MEK2 Antibody was produced in rabbits by repeated immunizations with synthetic peptide corresponding to amino acid residues near the N-terminus conjugated to KLH.

Purity/Specificity: This affinity purified antibody is directed against human MEK2 protein. Anti-MEK2 antibody was prepared from monospecific antiserum by immunoaffinity chromatography using synthetic peptide coupled to agarose beads. Cross reactivity is expected to occur with human, mouse and rat based on sequence identity of the peptide immunogen. This antibody does not react with the MEK1 isoform.

Relevant Links:

- [UniProtKB - P36507](#)

Application Details

Tested Applications: ELISA, IHC, WB

Application Note: Anti-MEK 2 (RABBIT) antibody has been tested in ELISA, Western Blotting, and IHC. Specific conditions of reactivity should be optimized by the end user. Expect a band of approximately 44 kDa.

Assay Dilutions: All assays should be optimized by the user. Recommended dilutions (if any) may be listed below.

ELISA: 1:40,000

IHC: 1:100

WB: 1µg/mL

Formulation

Physical State: Liquid (sterile filtered)

Concentration: 1.0 mg/mL by UV absorbance at 280 nm

Buffer: 0.02 M Potassium Phosphate, 0.15 M Sodium Chloride, pH 7.2

Preservative: 0.01% (w/v) Sodium Azide

Stabilizer: None

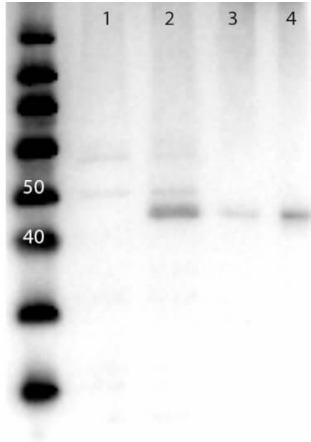
Shipping & Handling

Shipping Condition: Dry Ice

Storage Condition: Store vial at -20° C prior to opening. This product is stable at 4° C as an undiluted liquid. For extended storage, aliquot contents and freeze at -20° C or below. Avoid cycles of freezing and thawing. Dilute only prior to immediate use.

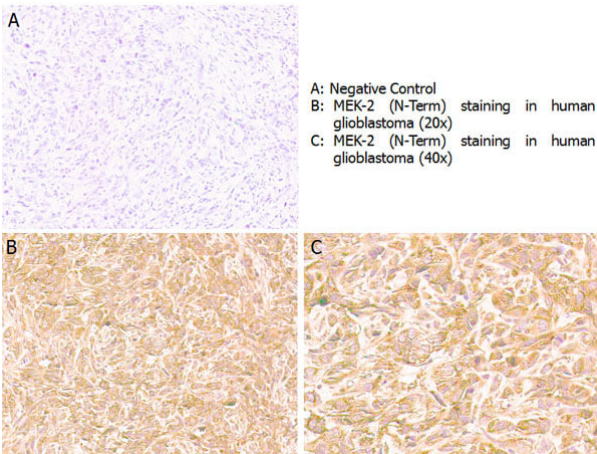
Expiration: Expiration date is one (1) year from date of receipt.

Images



Western Blot

Western Blot of Anti-MEK2 N-term Antibody. Lane 1: MEK1 rec lysate. Lane 2: MEK2 rec lysate. Lane 3: Mouse Brain Whole cell lysate (p/n W10-000-T004). Lane 4: HEK293T Whole cell lysate (p/n W09-001-GX5). Load: 10ug. Primary Antibody: Anti-MEK2 at 1µg/mL overnight at 4°C. Secondary Antibody: Goat Anti-Rabbit Peroxidase Conjugated Antibody at 1:40,000 for 30 min at RT. Blocking: BlockOut Universal Blocking buffer MB-073. Predicted MW: 45kDa.



Immunohistochemistry

Immunohistochemistry with anti-MEK2 (N-Term) antibody showing positive staining in human glioblastoma tissue at 20x and 40x (B & C). Staining was performed on Leica Bond system using the standard protocol. Formalin fixed/paraffin embedded tissue sections were subjected to antigen retrieval and then incubated with rabbit anti-MEK2 (N-Term) antibody 600-401-GN8 at 1:100 dilution for 60 minutes. Biotinylated Anti-rabbit secondary antibody was used at 1:200 dilution to detect primary antibody. The reaction was developed using streptavidin-HRP conjugated compact polymer system and visualized with chromogen substrate, 3'3-diamino-benzidine substrate (DAB). The sections were then counterstained with hematoxylin to detect cell nuclei.

Disclaimer

This product is for research use only and is not intended for therapeutic or diagnostic applications. Please contact a technical service representative for more information. All products of animal origin manufactured by Rockland Immunochemicals are derived from starting materials of North American origin. Collection was performed in United States Department of Agriculture (USDA) inspected facilities and all materials have been inspected and certified to be free of disease and suitable for exportation. All properties listed are typical characteristics and are not specifications. All suggestions and data are offered in good faith but without guarantee as conditions and methods of use of our products are beyond our control. All claims must be made within 30 days following the date of delivery. The prospective user must determine the suitability of our materials before adopting them on a commercial scale. Suggested uses of our products are not recommendations to use our products in violation of any patent or as a license under any patent of Rockland Immunochemicals, Inc. If you require a commercial license to use this material and do not have one, then return this material, unopened to: Rockland Inc., P.O. BOX 5199, Limerick, Pennsylvania, USA.