

Datasheet for 600-401-GN7**MEK1 N-Term Antibody****Overview**

Description:	Anti-MEK1 (RABBIT) Antibody - 600-401-GN7
Item No.:	600-401-GN7
Size:	100 µg
Applications:	ELISA, WB
Reactivity:	Human, Mouse, Rat
Host Species:	Rabbit

Product Details

Background:	MEK1 antibodies detect the MEK1 isoform. Mitogen-activated protein kinase kinase 1, also known as MKK or MEK, is an integral component of the MAP kinase cascade that regulates cell growth and differentiation. This pathway also plays a key role in synaptic plasticity in the brain. Activated MEK 1 acts as a dual specificity kinase phosphorylating both a threonine and a tyrosine residue on MAP kinase. The MEK1 antibody is ideal for investigators involved in Neuroscience, Cell Signaling and Cancer Research.
Synonyms:	rabbit anti-MEK1 antibody, Dual specificity mitogen-activated protein kinase kinase 1, MAP kinase kinase 1, MAPKK 1, MAP2K1, MEK, MEK 1, MKK1, PRKMK1, MEK-1, ERK activator kinase 1, MAPK/ERK kinase 1
Host Species:	Rabbit
Clonality:	Polyclonal
Format:	IgG

Target Details

Gene Name:	MAP2K1
Reactivity:	Human, Mouse, Rat
Immunogen Type:	Conjugated Peptide
Immunogen:	Anti-MEK1 Antibody was produced in rabbits by repeated immunizations with synthetic peptide corresponding to amino acid residues near the N-terminus conjugated to KLH.

Purity/Specificity: This affinity purified antibody is directed against human MEK1 protein. Anti-MEK1 antibody was prepared from monospecific antiserum by immunoaffinity chromatography using synthetic peptide coupled to agarose beads followed. Cross reactivity is expected to occur with human, mouse and rat based on sequence identity of the peptide immunogen. This antibody does not react with the MEK2 isoform.

Relevant Links:

- [UniProtKB - Q02750](#)

Application Details

Tested Applications: ELISA, WB

Application Note: Anti-MEK 1 (RABBIT) antibody has been tested in ELISA and Western Blotting. Specific conditions of reactivity should be optimized by the end user. Expect a band of approximately 43.5 kDa.

Assay Dilutions: All assays should be optimized by the user. Recommended dilutions (if any) may be listed below.

ELISA: 5 µg/ml

WB: 1:1000

Formulation

Physical State: Liquid (sterile filtered)

Concentration: 1.05 mg/mL by UV absorbance at 280 nm

Buffer: 0.02 M Potassium Phosphate, 0.15 M Sodium Chloride, pH 7.2

Preservative: 0.01% (w/v) Sodium Azide

Stabilizer: None

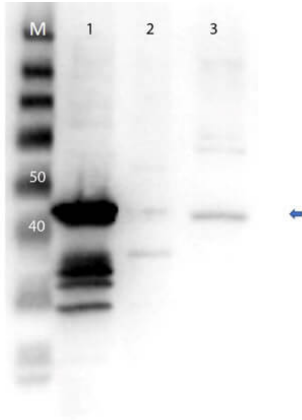
Shipping & Handling

Shipping Condition: Dry Ice

Storage Condition: Store vial at -20° C prior to opening. This product is stable at 4° C as an undiluted liquid. For extended storage, aliquot contents and freeze at -20° C or below. Avoid cycles of freezing and thawing. Dilute only prior to immediate use.

Expiration: Expiration date is one (1) year from date of receipt.

Images

**Western Blot**

Western Blot of Anti-MEK1 N Term Antibody. Lane M: Molecular weight markers. Lane 1: MEK1 rec lysate. Lane 2: MEK2 rec lysate. Lane 3: Mouse Brain Whole cell Lysate (p/n W10-000-T004). Load: 10ng. Primary Antibody: Anti-MEK1 at 1 μ g/mL overnight at 4°C. Secondary Antibody: Goat anti-Rabbit Peroxidase Conjugated Antibody (p/n 611-103-122) at 1:40,000 for 30 min at RT. Blocking: BlockOut Universal Blocking buffer (p/n MB-073). Predicted MW: 43.5kDa.

Disclaimer

This product is for research use only and is not intended for therapeutic or diagnostic applications. Please contact a technical service representative for more information. All products of animal origin manufactured by Rockland Immunochemicals are derived from starting materials of North American origin. Collection was performed in United States Department of Agriculture (USDA) inspected facilities and all materials have been inspected and certified to be free of disease and suitable for exportation. All properties listed are typical characteristics and are not specifications. All suggestions and data are offered in good faith but without guarantee as conditions and methods of use of our products are beyond our control. All claims must be made within 30 days following the date of delivery. The prospective user must determine the suitability of our materials before adopting them on a commercial scale. Suggested uses of our products are not recommendations to use our products in violation of any patent or as a license under any patent of Rockland Immunochemicals, Inc. If you require a commercial license to use this material and do not have one, then return this material, unopened to: Rockland Inc., P.O. BOX 5199, Limerick, Pennsylvania, USA.