

Datasheet for 600-401-GH5

STAT5 R31-Me2a Antibody**Overview**

| | |
|----------------------|------------------------------------------------------------------|
| Description: | Anti-STAT5 [Asym-dimethyl Arg31] (RABBIT) Antibody - 600-401-GH5 |
| Item No.: | 600-401-GH5 |
| Size: | 100 µg |
| Applications: | Dot Blot |
| Reactivity: | Human |
| Host Species: | Rabbit |

Product Details

| | |
|----------------------|----------------------------------------------------------------------------------------------------------------------------------------------------------------------------------------------------------------------------------------------------------------------------------------------------------------------------------------------------------------------------------------------------------------------------------------------------------------------------------------------------------------------------------------------------------|
| Background: | Signal transducer and activator of transcription 5 (Stat5) belongs to a family of cytoplasmic transcription factors that can be activated (phosphorylated) by a cell surface receptor. Phosphorylation at Tyr694 is obligatory for Stat5 activation. Stat5 has two isoforms, Stat5a and Stat5b. Aberrant Stat5 activation has been implicated in the pathogenesis of chronic myelogenous leukemia, prostate and breast cancer and tumor metastasis. Stat5 is localized in the cytoplasm and upon phosphorylation at Y694 is translocated to the nucleus. |
| Synonyms: | rabbit anti-STAT5 Asym-dimethyl Arg31 antibody, rabbit anti-STAT5 R31me2a antibody, STAT-5, STAT 5, STAT5A, Signal Transducer and Activator of Transcription 5A antibody, STAT-5A, Transcription factor STAT5A antibody |
| Host Species: | Rabbit |
| Clonality: | Polyclonal |
| Format: | IgG |

Target Details

| | |
|-------------------------|--------------------|
| Gene Name: | STAT5A |
| Reactivity: | Human |
| PTM Specificity: | Methylation |
| Immunogen Type: | Conjugated Peptide |

| | |
|----------------------------|-----------------------------------------------------------------------------------------------------------------------------------------------------------------------------------------------------------------------------------------------------------------------------------------------------------------------------------------|
| Immunogen: | STAT5A [Asym-dimethyl Arg31] affinity purified antibody was prepared from whole rabbit serum produced by repeated immunizations with a synthetic monomethylated peptide surrounding Arginine 31 of human STAT. |
| Purity/Specificity: | Anti-STAT5 R31/Me2a was affinity purified from monospecific antiserum by immunoaffinity chromatography. This antibody is specific for STAT5 R31/Me2a reacts with human STAT5. A BLAST analysis was used to suggest cross-reactivity with Human, mouse, and rat. Cross-reactivity with STAT5 from other sources has not been determined. |
| Relevant Links: | <ul style="list-style-type: none">• UniProtKB - P42229 |

Application Details

| | |
|-----------------------------|-------------------------------------------------------------------------------------------------------------------------------------------------------------------------------------------------------------------------------------------------------------------------------------------------------------------|
| Tested Applications: | Dot Blot |
| Application Note: | Anti-STAT5 [Asym-dimethyl Arg31] antibody has been tested by Dot Blot and is useful for Western Blot. Specific conditions for reactivity should be optimized by the end user. Expect a band approximately ~90.6 kDa corresponding to STAT5 protein by Western Blotting in the appropriate cell lysate or extract. |
| Assay Dilutions: | All assays should be optimized by the user. Recommended dilutions (if any) may be listed below. |
| ELISA: | 1:5000 |
| WB: | 1:500 |
| Other: | Dot Blot: 1:500 |

Formulation

| | |
|------------------------|------------------------------------------------------------|
| Physical State: | Liquid (sterile filtered) |
| Concentration: | 0.75 mg/ml by UV absorbance at 280 nm |
| Buffer: | 0.02 M Potassium Phosphate, 0.15 M Sodium Chloride, pH 7.2 |
| Preservative: | 0.05% (w/v) Sodium Azide |
| Stabilizer: | 30% Glycerol |

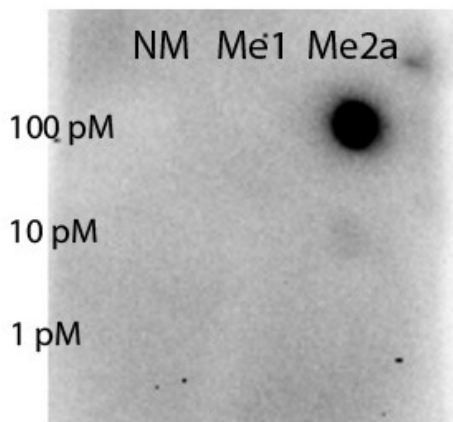
Shipping & Handling

| | |
|----------------------------|---------|
| Shipping Condition: | Dry Ice |
|----------------------------|---------|

Storage Condition: Store vial at -20° C prior to opening. Aliquot contents and freeze at -20° C or below for extended storage. Avoid cycles of freezing and thawing. Centrifuge product if not completely clear after standing at room temperature. This product is stable for several weeks at 4° C as an undiluted liquid. Dilute only prior to immediate use.

Expiration: Expiration date is one (1) year from date of receipt.

Images



Dot Blot

Dot blot of Rabbit Anti-STAT5 R31-Me2a antibody. Antigen: non-modified, monomethylated and asymmetric dimethylated forms of the immunizing peptide. Load: 100, 10, or 1 picomolar as indicated. Primary antibody: STAT5 R31-Me2a antibody at 1:1000 for 90 min at RT. (Date: 11/04/14; Exposure time: 82 seconds)

Disclaimer

This product is for research use only and is not intended for therapeutic or diagnostic applications. Please contact a technical service representative for more information. All products of animal origin manufactured by Rockland Immunochemicals are derived from starting materials of North American origin. Collection was performed in United States Department of Agriculture (USDA) inspected facilities and all materials have been inspected and certified to be free of disease and suitable for exportation. All properties listed are typical characteristics and are not specifications. All suggestions and data are offered in good faith but without guarantee as conditions and methods of use of our products are beyond our control. All claims must be made within 30 days following the date of delivery. The prospective user must determine the suitability of our materials before adopting them on a commercial scale. Suggested uses of our products are not recommendations to use our products in violation of any patent or as a license under any patent of Rockland Immunochemicals, Inc. If you require a commercial license to use this material and do not have one, then return this material, unopened to: Rockland Inc., P.O. BOX 5199, Limerick, Pennsylvania, USA.