

**Datasheet for 600-401-GH1S****STAT1 R31-Me2a Antibody****Overview**

<b>Description:</b>	Anti-STAT1 [Asym-dimethyl Arg31] (RABBIT) Antibody - 600-401-GH1S
<b>Item No.:</b>	600-401-GH1S
<b>Size:</b>	25 µL
<b>Applications:</b>	Dot Blot
<b>Reactivity:</b>	Human
<b>Host Species:</b>	Rabbit

**Product Details**

<b>Background:</b>	Signal transducer and activator of transcription 1 (Stat1) belongs to a family of cytoplasmic transcription factors that can be activated by a cell surface receptor. Stat1 has two isoforms. Stat1 has been found to be inappropriately activated in many tumors. In addition to tyrosine phosphorylation, Stat1 is phosphorylated through a p38 mitogen-activated protein kinase (MAPK)-dependent pathway at Ser727 in response to IFN-g and other cellular stresses. Stat1 is localized in the cytoplasm and upon phosphorylation at Y701 is translocated to the nucleus.
<b>Synonyms:</b>	rabbit anti-STAT1 Asym-dimethyl Arg31 antibody, rabbit anti-STAT1 R31me2a antibody, STAT-1, STAT 1, Signal transducer and activator of transcription 1-alpha/beta, Transcription factor ISGF-3 components p91/p84
<b>Host Species:</b>	Rabbit
<b>Clonality:</b>	Polyclonal
<b>Format:</b>	IgG

**Target Details**

<b>Gene Name:</b>	STAT1
<b>Reactivity:</b>	Human
<b>PTM Specificity:</b>	Methylation
<b>Immunogen Type:</b>	Conjugated Peptide

<b>Immunogen:</b>	STAT1 [Asym-dimethyl Arg] affinity purified antibody was prepared from whole rabbit serum produced by repeated immunizations with a synthetic monomethylated peptide surrounding Arginine 31 of human STAT.
<b>Purity/Specificity:</b>	Anti-STAT1 R31-Me2a was affinity purified from monospecific antiserum by immunoaffinity chromatography. This antibody reacts with human STAT1 surrounding aa31 and is specific for Me2a. A BLAST analysis was used to suggest cross-reactivity with Human, mouse, and rat. Cross-reactivity with STAT1 from other sources has not been determined. Minimal cross reactivity shown with STAT4 and STAT5 surrounding aa31.
<b>Relevant Links:</b>	<ul style="list-style-type: none"><li>• <a href="#">UniProtKB - P42224</a></li></ul>

## Application Details

<b>Tested Applications:</b>	Dot Blot
<b>Application Note:</b>	Anti-STAT1 [Asym-dimethyl Arg31] antibody has been tested by Dot Blot and is useful for Western Blot. Specific conditions for reactivity should be optimized by the end user. Expect a band approximately ~87 kDa corresponding to STAT1 protein by Western Blotting in the appropriate cell lysate or extract.
<b>Assay Dilutions:</b>	All assays should be optimized by the user. Recommended dilutions (if any) may be listed below.
<b>ELISA:</b>	1:5000
<b>WB:</b>	1:500
<b>Other:</b>	Dot Blot: 1:1000

## Formulation

<b>Physical State:</b>	Liquid (sterile filtered)
<b>Concentration:</b>	0.84 mg/ml by UV absorbance at 280 nm
<b>Buffer:</b>	0.02 M Potassium Phosphate, 0.15 M Sodium Chloride, pH 7.2
<b>Preservative:</b>	0.05% (w/v) Sodium Azide
<b>Stabilizer:</b>	30% Glycerol

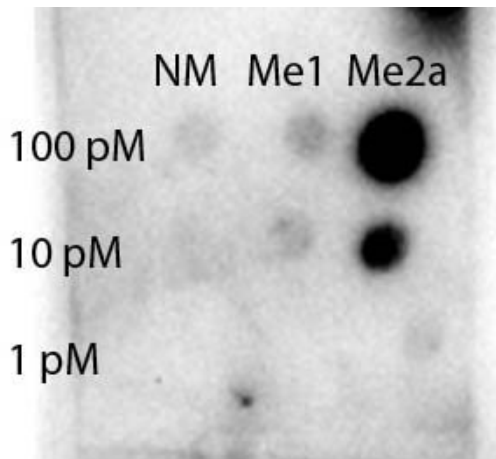
## Shipping & Handling

<b>Shipping Condition:</b>	Dry Ice
----------------------------	---------

**Storage Condition:** Store vial at -20° C or below prior to opening. This vial contains a relatively low volume of reagent (25 µL). To minimize loss of volume dilute 1:10 by adding 225 µL of the buffer stated above directly to the vial. Recap, mix thoroughly and briefly centrifuge to collect the volume at the bottom of the vial. Use this intermediate dilution when calculating final dilutions as recommended below. Store the vial at -20°C or below after dilution. Avoid cycles of freezing and thawing.

**Expiration:** Expiration date is one (1) year from date of receipt.

## Images



### Dot Blot

Dot blot of Rabbit Anti-STAT1 R31-Me2a antibody. Antigen: non-modified, monomethylated and asymmetric dimethylated forms of the immunizing peptide. Load: 100, 10, or 1 picomolar as indicated. Primary antibody: STAT1 R31-Me2a antibody at 1:1000 for 90 min at RT. (Date: 11/04/14; Exposure time: 48 seconds).

## Disclaimer

This product is for research use only and is not intended for therapeutic or diagnostic applications. Please contact a technical service representative for more information. All products of animal origin manufactured by Rockland Immunochemicals are derived from starting materials of North American origin. Collection was performed in United States Department of Agriculture (USDA) inspected facilities and all materials have been inspected and certified to be free of disease and suitable for exportation. All properties listed are typical characteristics and are not specifications. All suggestions and data are offered in good faith but without guarantee as conditions and methods of use of our products are beyond our control. All claims must be made within 30 days following the date of delivery. The prospective user must determine the suitability of our materials before adopting them on a commercial scale. Suggested uses of our products are not recommendations to use our products in violation of any patent or as a license under any patent of Rockland Immunochemicals, Inc. If you require a commercial license to use this material and do not have one, then return this material, unopened to: Rockland Inc., P.O. BOX 5199, Limerick, Pennsylvania, USA.