

**Datasheet for 600-401-GG3****ZNF521 Antibody****Overview**

<b>Description:</b>	Anti-ZNF521 (RABBIT) Antibody - 600-401-GG3
<b>Item No.:</b>	600-401-GG3
<b>Size:</b>	100 µg
<b>Applications:</b>	ELISA, IF, IHC, WB
<b>Reactivity:</b>	Human
<b>Host Species:</b>	Rabbit

**Product Details**

<b>Background:</b>	The zinc finger protein 521 (ZNF521) is a transcription factor containing an N-terminal transcriptional repressor motif and 30 zinc finger domains. It plays a role in both erythroid cell and osteoblast differentiation during development, inhibiting the activities of early B-cell factor 1 (EBF1) in erythroid cells and Runx2 in osteoblast precursors. ZNF521 binds to both Runx2 and histone deacetylase 3 (HDAC3), promotes their association and antagonizes Runx2 transcriptional activity in a HDAC3-dependent manner, thereby regulating osteoblast differentiation, skeletal development, and bone homeostasis.
<b>Synonyms:</b>	ZNF521 Antibody, EHZF, Evi3, EHZF, LIP3, Zinc finger protein 521, Early hematopoietic zinc finger protein
<b>Host Species:</b>	Rabbit
<b>Clonality:</b>	Polyclonal
<b>Format:</b>	IgG

**Target Details**

<b>Gene Name:</b>	ZNF521
<b>Reactivity:</b>	Human
<b>Immunogen Type:</b>	Conjugated Peptide
<b>Immunogen:</b>	Anti-ZNF521 antibody was prepared from whole rabbit serum produced by repeated immunizations with an 18 amino acid synthetic peptide near the N-terminus of human ZNF521.

**Purity/Specificity:** Anti-ZNF521 Antibody was affinity purified from monospecific antiserum by immunoaffinity chromatography. ZNF521 antibody is human specific.

**Relevant Links:**

- [UniProtKB - Q96K83](#)
- [GeneID - 25925](#)
- [NCBI - NP\\_001295154.1](#)

## Application Details

**Tested Applications:** ELISA, IF, IHC, WB

**Application Note:** Anti-ZNF521 Antibody has been tested for use in ELISA, Western Blotting, Immunocytochemistry and Immunofluorescence. Specific conditions for reactivity should be optimized by the end user. Expect a band at approximately 148 kDa in Western Blots of specific cell lysates and tissues.

**Assay Dilutions:** All assays should be optimized by the user. Recommended dilutions (if any) may be listed below.

**ELISA:** 1:10,000

**IF:** 2.5 µg/mL

**WB:** 1 µg/mL

## Formulation

**Physical State:** Liquid (sterile filtered)

**Concentration:** 1 mg/mL by UV absorbance at 280 nm

**Buffer:** 0.01 M Sodium Phosphate, 0.25 M Sodium Chloride, pH 7.2

**Preservative:** 0.02% (w/v) Sodium Azide

**Stabilizer:** None

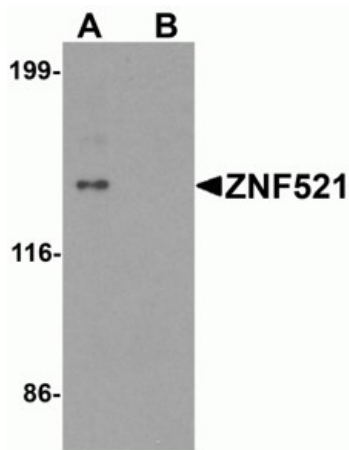
## Shipping & Handling

**Shipping Condition:** Dry Ice

**Storage Condition:** Store vial at -20° C prior to opening. Aliquot contents and freeze at -20° C or below for extended storage. Avoid cycles of freezing and thawing. Centrifuge product if not completely clear after standing at room temperature. This product is stable for several weeks at 4° C as an undiluted liquid. Dilute only prior to immediate use.

**Expiration:** Expiration date is one (1) year from date of receipt.

## Images

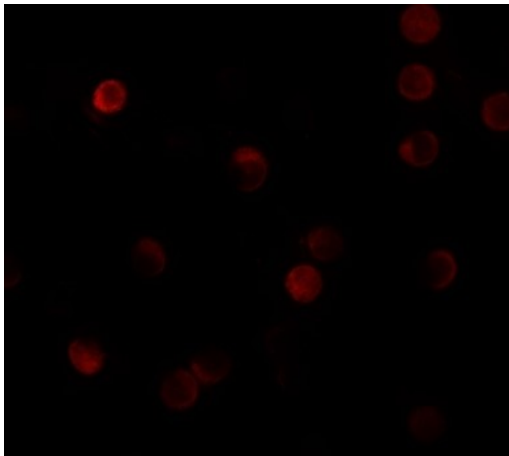


### Western Blot

Western blot analysis of ZNF521.

Load: HeLa cell lysate.

Primary Antibody: ZNF521 antibody at 1  $\mu\text{g}/\text{ml}$  in (A) the absence and (B) the presence of blocking peptide.



### Immunofluorescence Microscopy

Immunofluorescence of ZNF521.

Cell: HeLa cells.

Primary Antibody: ZNF521 antibody at 20  $\mu\text{g}/\text{mL}$ .



### Immunocytochemistry

Immunocytochemistry of ZNF521.

Cell: HeLa cells.

Primary Antibody: ZNF521 antibody at 2.5  $\mu\text{g}/\text{mL}$ .

## Disclaimer

This product is for research use only and is not intended for therapeutic or diagnostic applications. Please contact a technical service representative for more information. All products of animal origin manufactured by Rockland Immunochemicals are derived from starting materials of North American origin. Collection was performed in United States Department of Agriculture (USDA) inspected facilities and all materials have been inspected and certified to be free of disease and suitable for exportation. All properties listed are typical characteristics and are not specifications. All suggestions and data are offered in good faith but without guarantee as conditions and methods of use of our products are beyond our control. All claims must be made within 30 days following the date of delivery. The prospective user must determine the suitability of our materials before adopting them on a commercial scale. Suggested uses of our products are not recommendations to use our products in violation of any patent or as a license under any patent of Rockland Immunochemicals, Inc. If you require a commercial license to use this material and do not have one, then return this material, unopened to: Rockland Inc., P.O. BOX 5199, Limerick, Pennsylvania, USA.