

Datasheet for 600-401-GG1

ZNF346 Antibody

Overview

| | |
|----------------------|---|
| Description: | Anti-ZNF346 (RABBIT) Antibody - 600-401-GG1 |
| Item No.: | 600-401-GG1 |
| Size: | 100 µg |
| Applications: | ELISA, WB |
| Reactivity: | Human, Mouse, Rat |
| Host Species: | Rabbit |

Product Details

| | |
|----------------------|--|
| Background: | ZNF346, also known as JAZ (just another zinc-finger protein), is a nucleolar, zinc finger protein which preferentially binds to double-stranded (ds) RNA or RNA/DNA hybrids with high affinity via C2H2 zinc fingers. ZNF346 contains four CH-type zinc finger motifs that are connected by long (28-38) amino acid linker sequences. ZNF346 is expressed in all tissues tested and localizes to the nucleus, primarily the nucleolus. ZNF346 is exported by exportin-5 but translocates back into nuclei by a facilitated diffusion mechanism. ZNF346 interacts with ILF3 in an RNA-independent manner and may be involved in cell growth and survival. |
| Synonyms: | ZNF346 Antibody, JAZ, Zfp346, JAZ, Zinc finger protein 346, Just another zinc finger protein |
| Host Species: | Rabbit |
| Clonality: | Polyclonal |
| Format: | IgG |

Target Details

| | |
|------------------------|--|
| Gene Name: | ZNF346 |
| Reactivity: | Human, Mouse, Rat |
| Immunogen Type: | Conjugated Peptide |
| Immunogen: | Anti-ZNF346 antibody was prepared from whole rabbit serum produced by repeated immunizations with a 20 amino acid synthetic peptide near the N-terminus of human ZNF346. |

Purity/Specificity: Anti-ZNF346 Antibody was affinity purified from monospecific antiserum by immunoaffinity chromatography. Cross reactivity with ZNF346 from other sources has not been determined.

Relevant Links:

- [UniProtKB - Q9UL40](#)
- [GeneID - 23567](#)
- [NCBI - NP_001295142.1](#)

Application Details

Tested Applications: ELISA, WB

Application Note: Anti-ZNF346 Antibody has been tested for use in ELISA and Western Blotting. Specific conditions for reactivity should be optimized by the end user. Expect a band at approximately 33 kDa in Western Blots of specific cell lysates and tissues.

Assay Dilutions: All assays should be optimized by the user. Recommended dilutions (if any) may be listed below.

ELISA: 1:10,000

WB: 1 µg/mL

Formulation

Physical State: Liquid (sterile filtered)

Concentration: 1 mg/mL by UV absorbance at 280 nm

Buffer: 0.01 M Sodium Phosphate, 0.25 M Sodium Chloride, pH 7.2

Preservative: 0.02% (w/v) Sodium Azide

Stabilizer: None

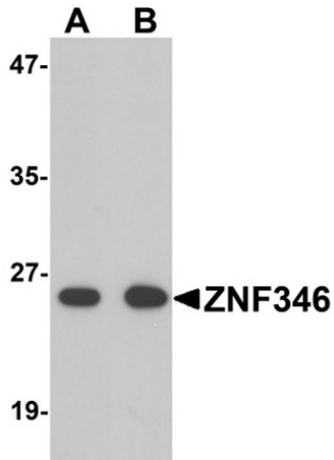
Shipping & Handling

Shipping Condition: Dry Ice

Storage Condition: Store vial at -20° C prior to opening. Aliquot contents and freeze at -20° C or below for extended storage. Avoid cycles of freezing and thawing. Centrifuge product if not completely clear after standing at room temperature. This product is stable for several weeks at 4° C as an undiluted liquid. Dilute only prior to immediate use.

Expiration: Expiration date is one (1) year from date of receipt.

Images



Western Blot

Western blot analysis of ZNF346.

Load: human kidney tissue lysate per lane.

Primary Antibody: Anti-ZNF346 antibody at (A) 0.5 µg/ml and (B) 1 µg/mL.

Disclaimer

This product is for research use only and is not intended for therapeutic or diagnostic applications. Please contact a technical service representative for more information. All products of animal origin manufactured by Rockland Immunochemicals are derived from starting materials of North American origin. Collection was performed in United States Department of Agriculture (USDA) inspected facilities and all materials have been inspected and certified to be free of disease and suitable for exportation. All properties listed are typical characteristics and are not specifications. All suggestions and data are offered in good faith but without guarantee as conditions and methods of use of our products are beyond our control. All claims must be made within 30 days following the date of delivery. The prospective user must determine the suitability of our materials before adopting them on a commercial scale. Suggested uses of our products are not recommendations to use our products in violation of any patent or as a license under any patent of Rockland Immunochemicals, Inc. If you require a commercial license to use this material and do not have one, then return this material, unopened to: Rockland Inc., P.O. BOX 5199, Limerick, Pennsylvania, USA.