

Datasheet for 600-401-GF8

ZMYM3 Antibody

Overview

Description:	Anti-ZMYM3 (RABBIT) Antibody - 600-401-GF8
Item No.:	600-401-GF8
Size:	100 µg
Applications:	ELISA, IF, WB
Reactivity:	Human, Mouse
Host Species:	Rabbit

Product Details

Background:	Zinc-finger proteins contain DNA-binding domains characterized by the unique role of zinc and have a wide variety of functions such as transcriptional activation or repression. The protein folding and the DNA binding ability are governed by the coordination of a zinc ion. As a member of the MYM (myeloproliferative and mental retardation) gene family, ZMYM3 is highly conserved in vertebrates and most abundantly expressed in the brain. The encoded protein is a component of histone deacetylase-containing multiprotein complexes that function through modifying chromatin structure to keep genes silent. A chromosomal translocation (X;13) involving this gene is associated with X-linked mental retardation.
Synonyms:	ZMYM3 Antibody, MYM, XFIM, ZNF261, DXS6673E, ZNF198L2, KIAA0385, Zinc finger MYM-type protein 3, Zinc finger protein 261
Host Species:	Rabbit
Clonality:	Polyclonal
Format:	IgG

Target Details

Gene Name:	ZMYM3
Reactivity:	Human, Mouse
Immunogen Type:	Conjugated Peptide
Immunogen:	Anti-AXIN2 antibody was prepared from whole rabbit serum produced by repeated immunizations with a 20 amino acid synthetic peptide near the C-terminus of human AXIN2.

Purity/Specificity: Anti-ZMYM3 Antibody was affinity purified from monospecific antiserum by immunoaffinity chromatography. At least three isoforms of ZMYM3 are known to exist; this antibody will detect all three. ZMYM3 antibody is predicted to not cross-react with other ZMYM protein family members.

Relevant Links:

- [UniProtKB - Q14202](#)
- [GeneID - 9203](#)
- [NCBI - NP_001164633.1](#)

Application Details

Tested Applications: ELISA, IF, WB

Application Note: Anti-ZMYM3 Antibody has been tested for use in ELISA, Western Blotting and Immunofluorescence. Specific conditions for reactivity should be optimized by the end user. Expect a band at approximately 152 kDa in Western Blots of specific cell lysates and tissues.

Assay Dilutions: All assays should be optimized by the user. Recommended dilutions (if any) may be listed below.

ELISA: 1:10,000

IF: 20 µg/mL

WB: 1 µg/mL

Formulation

Physical State: Liquid (sterile filtered)

Concentration: 1 mg/mL by UV absorbance at 280 nm

Buffer: 0.01 M Sodium Phosphate, 0.25 M Sodium Chloride, pH 7.2

Preservative: 0.02% (w/v) Sodium Azide

Stabilizer: None

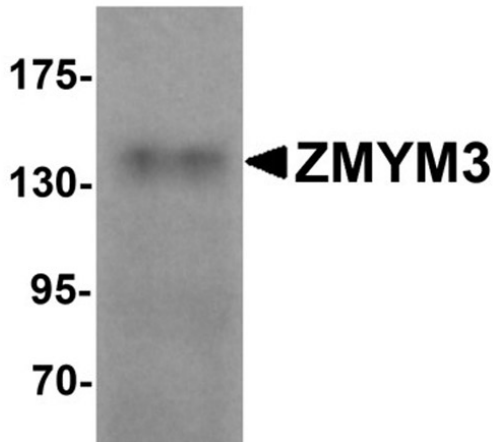
Shipping & Handling

Shipping Condition: Dry Ice

Storage Condition: Store vial at -20° C prior to opening. Aliquot contents and freeze at -20° C or below for extended storage. Avoid cycles of freezing and thawing. Centrifuge product if not completely clear after standing at room temperature. This product is stable for several weeks at 4° C as an undiluted liquid. Dilute only prior to immediate use.

Expiration: Expiration date is one (1) year from date of receipt.

Images

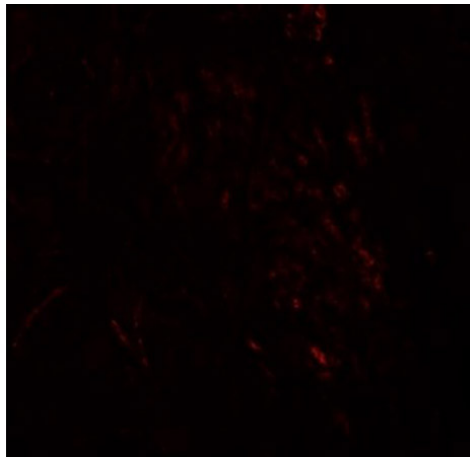


Western Blot

Western blot analysis of ZMYM3.

Load: human brain tissue lysate.

Primary Antibody: ZMYM3 antibody at 1 µg/mL.



Immunofluorescence Microscopy

Immunofluorescence of ZMYM3.

Tissue: human brain tissue.

Primary Antibody: ZMYM3 antibody at 20 µg/mL.

Disclaimer

This product is for research use only and is not intended for therapeutic or diagnostic applications. Please contact a technical service representative for more information. All products of animal origin manufactured by Rockland Immunochemicals are derived from starting materials of North American origin. Collection was performed in United States Department of Agriculture (USDA) inspected facilities and all materials have been inspected and certified to be free of disease and suitable for exportation. All properties listed are typical characteristics and are not specifications. All suggestions and data are offered in good faith but without guarantee as conditions and methods of use of our products are beyond our control. All claims must be made within 30 days following the date of delivery. The prospective user must determine the suitability of our materials before adopting them on a commercial scale. Suggested uses of our products are not recommendations to use our products in violation of any patent or as a license under any patent of Rockland Immunochemicals, Inc. If you require a commercial license to use this material and do not have one, then return this material, unopened to: Rockland Inc., P.O. BOX 5199, Limerick, Pennsylvania, USA.