

Datasheet for 600-401-GC9**ZCRB1 Antibody****Overview**

| | |
|----------------------|--|
| Description: | Anti-ZCRB1 (RABBIT) Antibody - 600-401-GC9 |
| Item No.: | 600-401-GC9 |
| Size: | 100 µg |
| Applications: | ELISA, WB |
| Reactivity: | Human, Mouse, Rat |
| Host Species: | Rabbit |

Product Details

| | |
|----------------------|---|
| Background: | ZCRB1 is a nuclear protein first identified in a differential display screen involving morphine-dependence-related genes. Its expression is increased following morphine treatment and has been observed to be elevated in HepG2 cells. ZCRB1 contains a CCHC-type zinc finger RNA-binding motif and can interact with the DBA-binding domain of the stem cell regulator C/EBP transcription factors. ZCRB1 was identified as one of the protein components of U11/U12 snRNPs, which are components of U12-type spliceosome and function as a molecular bridge connecting both ends of the intron, suggesting ZCRB1 may play a key role in U12-type splicing. |
| Synonyms: | ZCRB1 Antibody, MADP1, RBM36, MADP-1, SNRNP31, ZCCHC19, Zinc finger CCHC-type and RNA-binding motif-containing protein 1 |
| Host Species: | Rabbit |
| Clonality: | Polyclonal |
| Format: | IgG |

Target Details

| | |
|------------------------|--|
| Gene Name: | ZCRB1 |
| Reactivity: | Human, Mouse, Rat |
| Immunogen Type: | Conjugated Peptide |
| Immunogen: | Anti-ZCRB1 antibody was prepared from whole rabbit serum produced by repeated immunizations with a 17 amino acid synthetic peptide near the C-terminus of human ZCRB1. |

Purity/Specificity: Anti-ZCRB1 Antibody was affinity purified from monospecific antiserum by immunoaffinity chromatography. Cross reactivity with ZCRB1 from other sources has not been determined.

Relevant Links:

- [UniProtKB - Q8TBF4](#)
- [GeneID - 85437](#)
- [NCBI - NP_149105.3](#)

Application Details

Tested Applications: ELISA, WB

Application Note: Anti-ZCRB1 Antibody has been tested for use in ELISA and Western Blotting. Specific conditions for reactivity should be optimized by the end user. Expect a band at approximately 25 kDa in Western Blots of specific cell lysates and tissues.

Assay Dilutions: All assays should be optimized by the user. Recommended dilutions (if any) may be listed below.

ELISA: 1:10,000 - 1:20,000

WB: 1-2 µg/mL

Formulation

Physical State: Liquid (sterile filtered)

Concentration: 1 mg/mL by UV absorbance at 280 nm

Buffer: 0.01 M Sodium Phosphate, 0.25 M Sodium Chloride, pH 7.2

Preservative: 0.02% (w/v) Sodium Azide

Stabilizer: None

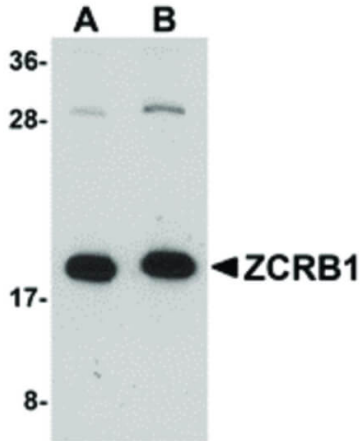
Shipping & Handling

Shipping Condition: Dry Ice

Storage Condition: Store vial at -20° C prior to opening. Aliquot contents and freeze at -20° C or below for extended storage. Avoid cycles of freezing and thawing. Centrifuge product if not completely clear after standing at room temperature. This product is stable for several weeks at 4° C as an undiluted liquid. Dilute only prior to immediate use.

Expiration: Expiration date is one (1) year from date of receipt.

Images



Western Blot

Western Blot of ZCRB1 antibody. Lane 1: Raji cell lysate with ZCRB1 antibody at 1 $\mu\text{g}/\text{mL}$. Lane 2: Raji cell lysate with ZCRB1 antibody at 2 $\mu\text{g}/\text{mL}$. Load: 35 μg per lane. Secondary antibody: Peroxidase rabbit secondary antibody at 1:10,000 for 45 min at RT. Block: 5% BLOTTO overnight at 4°C. Predicted/Observed size: 25 kDa, 20 kDa for ZCRB1. Other band(s): ZCRB1 splice variants and isoforms.

Disclaimer

This product is for research use only and is not intended for therapeutic or diagnostic applications. Please contact a technical service representative for more information. All products of animal origin manufactured by Rockland Immunochemicals are derived from starting materials of North American origin. Collection was performed in United States Department of Agriculture (USDA) inspected facilities and all materials have been inspected and certified to be free of disease and suitable for exportation. All properties listed are typical characteristics and are not specifications. All suggestions and data are offered in good faith but without guarantee as conditions and methods of use of our products are beyond our control. All claims must be made within 30 days following the date of delivery. The prospective user must determine the suitability of our materials before adopting them on a commercial scale. Suggested uses of our products are not recommendations to use our products in violation of any patent or as a license under any patent of Rockland Immunochemicals, Inc. If you require a commercial license to use this material and do not have one, then return this material, unopened to: Rockland Inc., P.O. BOX 5199, Limerick, Pennsylvania, USA.