

Datasheet for 600-401-GC7
ZC3H12D Antibody**Overview**

Description:	Anti-ZC3H12D (RABBIT) Antibody - 600-401-GC7
Item No.:	600-401-GC7
Size:	100 µg
Applications:	ELISA, WB
Reactivity:	Human
Host Species:	Rabbit

Product Details

Background:	ZC3H12D, also known as MCPIP4, is a member of a family of novel CCCH-zinc finger proteins that includes ZC3H12A, a protein that is thought to be involved in macrophage activation, host immunity and inflammatory diseases. ZC3H12D is highly expressed in spleen, intestine, and colon. Similar to ZC3H12A and ZC3H12C, ZC3H12D expression in murine macrophages is also increased after treatment with lipopolysaccharide (LPS), although not to the same level as ZC3H12A. This pattern of expression was not duplicated in human-derived macrophages, suggesting it also may play a different role in host immunity and inflammatory response.
Synonyms:	ZC3H12D Antibody, TFL, p34, MCPIP4, C6orf95, dJ281H8.1, TFL, Probable ribonuclease ZC3H12D, MCP-induced protein 4
Host Species:	Rabbit
Clonality:	Polyclonal
Format:	IgG

Target Details

Gene Name:	ZC3H12D
Reactivity:	Human
Immunogen Type:	Conjugated Peptide
Immunogen:	Anti-ZC3H12D antibody was prepared from whole rabbit serum produced by repeated immunizations with a 17 amino acid synthetic peptide near the C-terminus of human ZC3H12D.

Purity/Specificity:	Anti-ZC3H12D Antibody was affinity purified from monospecific antiserum by immunoaffinity chromatography. Cross reactivity with ZC3H12D from other sources has not been determined.
Relevant Links:	<ul style="list-style-type: none">• UniProtKB - A2A288• GeneID - 340152• NCBI - NP_997243.2

Application Details

Tested Applications:	ELISA, WB
Application Note:	Anti-ZC3H12D Antibody has been tested for use in ELISA and Western Blotting. Specific conditions for reactivity should be optimized by the end user. Expect a band at approximately 58 kDa in Western Blots of specific cell lysates and tissues.
Assay Dilutions:	All assays should be optimized by the user. Recommended dilutions (if any) may be listed below.
ELISA:	1:10,000
WB:	1 µg/mL

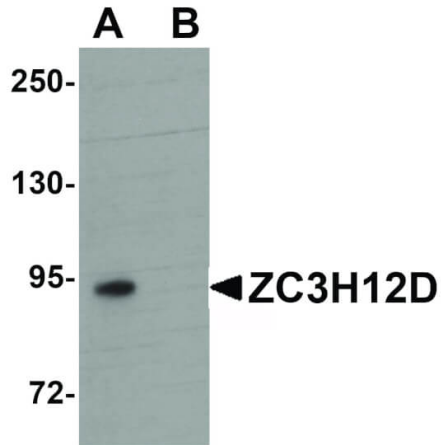
Formulation

Physical State:	Liquid (sterile filtered)
Concentration:	1 mg/mL by UV absorbance at 280 nm
Buffer:	0.01 M Sodium Phosphate, 0.25 M Sodium Chloride, pH 7.2
Preservative:	0.02% (w/v) Sodium Azide
Stabilizer:	None

Shipping & Handling

Shipping Condition:	Dry Ice
Storage Condition:	Store vial at -20° C prior to opening. Aliquot contents and freeze at -20° C or below for extended storage. Avoid cycles of freezing and thawing. Centrifuge product if not completely clear after standing at room temperature. This product is stable for several weeks at 4° C as an undiluted liquid. Dilute only prior to immediate use.
Expiration:	Expiration date is one (1) year from date of receipt.

Images



Western Blot

Western Blot of ZC3H12D antibody. Lane 1: THP-1 cell lysate in the absence of blocking peptide. Lane 2: THP-1 cell lysate in the presence of blocking peptide. Primary Antibody: Anti-ZC3H12D antibody at 1 µg/mL. Secondary antibody: Peroxidase rabbit secondary antibody at 1:10,000 for 45 min at RT. Block: 5% BLOTTO overnight at 4°C. Predicted/Observed size: 58 kDa, 94 kDa for ZC3H12D. Other band(s): ZC3H12D splice variants and isoforms.

Disclaimer

This product is for research use only and is not intended for therapeutic or diagnostic applications. Please contact a technical service representative for more information. All products of animal origin manufactured by Rockland Immunochemicals are derived from starting materials of North American origin. Collection was performed in United States Department of Agriculture (USDA) inspected facilities and all materials have been inspected and certified to be free of disease and suitable for exportation. All properties listed are typical characteristics and are not specifications. All suggestions and data are offered in good faith but without guarantee as conditions and methods of use of our products are beyond our control. All claims must be made within 30 days following the date of delivery. The prospective user must determine the suitability of our materials before adopting them on a commercial scale. Suggested uses of our products are not recommendations to use our products in violation of any patent or as a license under any patent of Rockland Immunochemicals, Inc. If you require a commercial license to use this material and do not have one, then return this material, unopened to: Rockland Inc., P.O. BOX 5199, Limerick, Pennsylvania, USA.