

Datasheet for 600-401-GC4 ZC3H12A Antibody

Overview

Description:	Anti-ZC3H12A (RABBIT) Antibody - 600-401-GC4
Item No.:	600-401-GC4
Size:	100 µg
Applications:	ELISA, WB
Reactivity:	Human
Host Species:	Rabbit

Product Details

Background:	ZC3H12A, also known as MCPIP, is an essential member of a family of novel CCCH-zinc finger proteins that regulate macrophage activation and may be involved in host immunity and inflammatory diseases. ZC3H12A has RNase activity that prevents some immune disorders by directly affecting the mRNA stability of interleukins such as IL-6 and IL12p40. Mice lacking the ZC3H12A gene suffered from severe anemia, and most dies within 12 weeks. Overexpression of ZC3H12A causes ER stress and induces a number of genes involved in apoptosis and autophagy, including JNK, PUMA, and beclin-1 in cardiac myoblasts, leading to cell death. ZC3H12A can also induce adipogenesis in 3T3-L1 pre-adipocytes in the absence of PPAPgamma, demonstrating the complex roles ZC3H12A plays.
Synonyms:	ZC3H12A Antibody, MCPIP, MCPIP1, dJ423B22.1, MCPIP, Ribonuclease ZC3H12A, MCP-induced protein 1
Host Species:	Rabbit
Clonality:	Polyclonal
Format:	IgG

Target Details

Gene Name:	ZC3H12A
Reactivity:	Human
Immunogen Type:	Conjugated Peptide

Immunogen:	Anti-ZC3H12A antibody was prepared from whole rabbit serum produced by repeated immunizations with a 17 amino acid synthetic peptide near the internal region of human ZC3H12A.
Purity/Specificity:	Anti-ZC3H12A Antibody was affinity purified from monospecific antiserum by immunoaffinity chromatography. Cross reactivity with ZC3H12A from other sources has not been determined.
Relevant Links:	<ul style="list-style-type: none">• UniProtKB - Q5D1E8• GeneID - 80149• NCBI - NP_001310479.1

Application Details

Tested Applications:	ELISA, WB
Application Note:	Anti-ZC3H12A Antibody has been tested for use in ELISA and Western Blotting. Specific conditions for reactivity should be optimized by the end user. Expect a band at approximately 66 kDa in Western Blots of specific cell lysates and tissues.
Assay Dilutions:	All assays should be optimized by the user. Recommended dilutions (if any) may be listed below.
ELISA:	1:10,000 - 1:20,000
WB:	1-2 µg/mL

Formulation

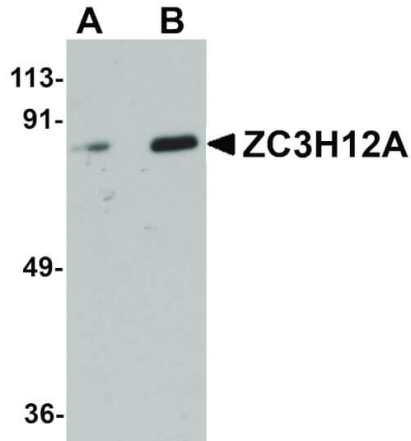
Physical State:	Liquid (sterile filtered)
Concentration:	1 mg/mL by UV absorbance at 280 nm
Buffer:	0.01 M Sodium Phosphate, 0.25 M Sodium Chloride, pH 7.2
Preservative:	0.02% (w/v) Sodium Azide
Stabilizer:	None

Shipping & Handling

Shipping Condition:	Dry Ice
Storage Condition:	Store vial at -20° C prior to opening. Aliquot contents and freeze at -20° C or below for extended storage. Avoid cycles of freezing and thawing. Centrifuge product if not completely clear after standing at room temperature. This product is stable for several weeks at 4° C as an undiluted liquid. Dilute only prior to immediate use.

Expiration: Expiration date is one (1) year from date of receipt.

Images



Western Blot

Western Blot of ZC3H12A antibody. Lane 1: Raji cell lysate with ZC3H12A antibody at 1 µg/mL. Lane 2: Raji cell lysate with ZC3H12A antibody at 2 µg/mL. Secondary antibody: Peroxidase rabbit secondary antibody at 1:10,000 for 45 min at RT. Block: 5% BLOTTO overnight at 4°C. Predicted/Observed size: 66 kDa, 88 kDa for ZC3H12A. Other band(s): ZC3H12A splice variants and isoforms.

Disclaimer

This product is for research use only and is not intended for therapeutic or diagnostic applications. Please contact a technical service representative for more information. All products of animal origin manufactured by Rockland Immunochemicals are derived from starting materials of North American origin. Collection was performed in United States Department of Agriculture (USDA) inspected facilities and all materials have been inspected and certified to be free of disease and suitable for exportation. All properties listed are typical characteristics and are not specifications. All suggestions and data are offered in good faith but without guarantee as conditions and methods of use of our products are beyond our control. All claims must be made within 30 days following the date of delivery. The prospective user must determine the suitability of our materials before adopting them on a commercial scale. Suggested uses of our products are not recommendations to use our products in violation of any patent or as a license under any patent of Rockland Immunochemicals, Inc. If you require a commercial license to use this material and do not have one, then return this material, unopened to: Rockland Inc., P.O. BOX 5199, Limerick, Pennsylvania, USA.